

POLOŽAJ U GRADU

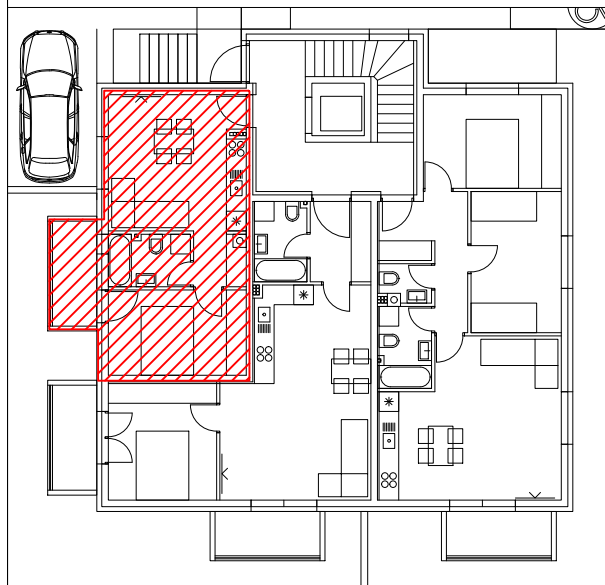


STAN 1	m ²	koef.	m ² sa koef
Dnevni boravak + kuhinja	17,4	1,0	17,4
Kupaona	4,0	1,0	4,0
Hodnik	2,4	1,0	2,4
Soba	10,9	1,0	10,9
Balkon nenatkriveni	4,3	0,25	1,08
UKUPNO STAN 1			35,78

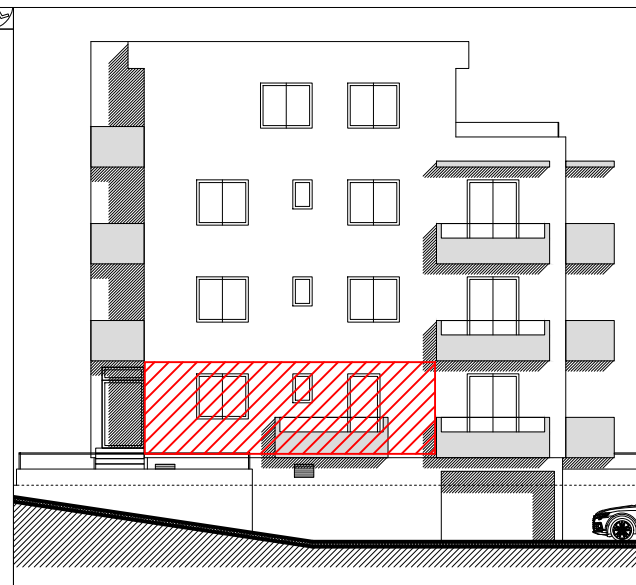
UZ STAN SE ZASEBNO PRODAJE SPREMIŠTE U PODRUMU I PARKING: VANJSKI ILI GARAŽNI.



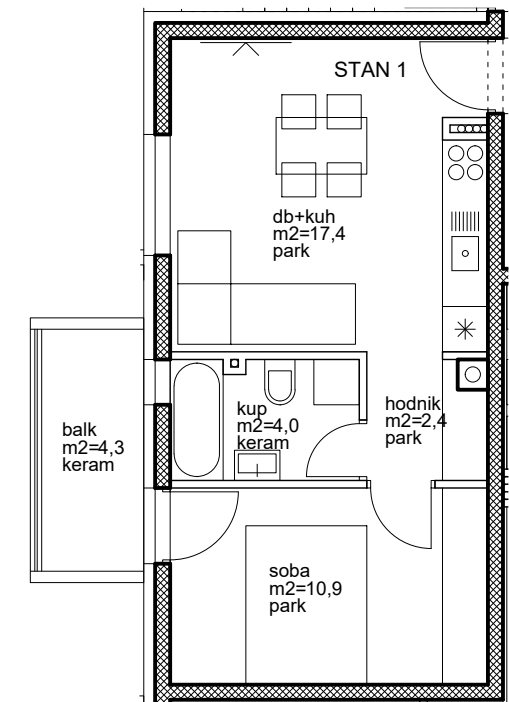
SITUACIJA



POLOŽAJ U ZGRADI, PRIZEMLJE

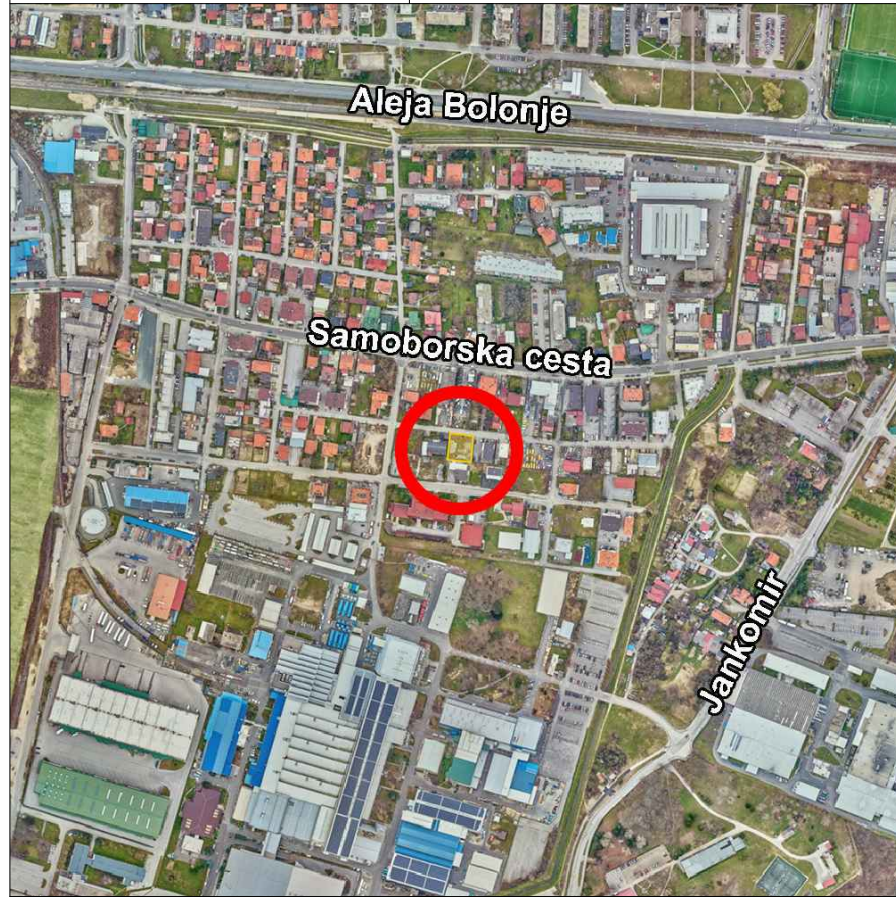


ZAPADNO PROČELJE



MJ 1:100





POLOŽAJ U GRADU

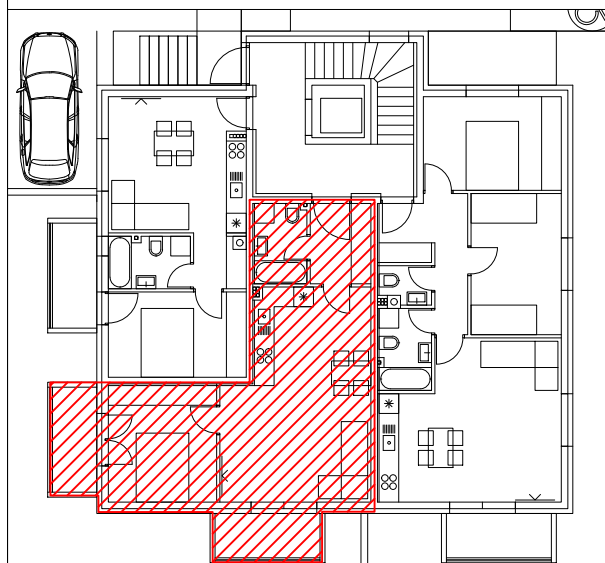


STAN 2	m ²	koef.	m ² sa koef
Ulaz	4,5	1,0	4,5
Kupaona	4,0	1,0	4,0
Dnevni boravak + kuhinja	27,0	1,0	27,0
Soba	11,7	1,0	11,7
Balkon natkriveni	4,3	0,5	2,15
Balkon natkriveni	4,3	0,5	2,15
UKUPNO STAN 2			51,50

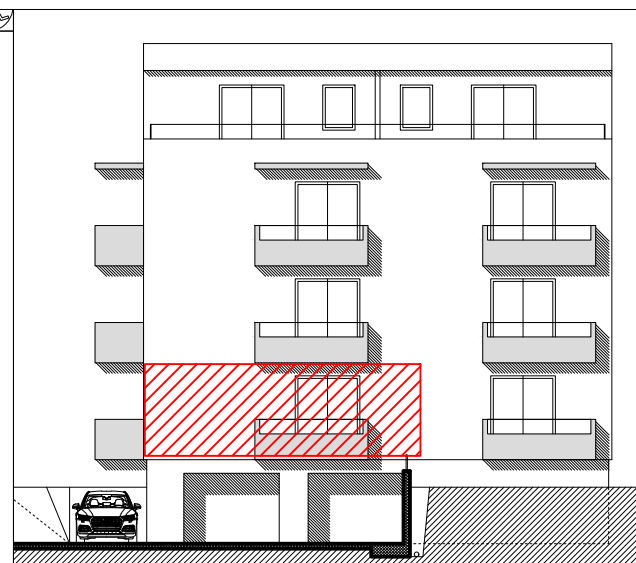
UZ STAN SE ZASEBNO PRODAJE SPREMIŠTE U PODRUMU I PARKING: VANJSKI ILI GARAŽNI.



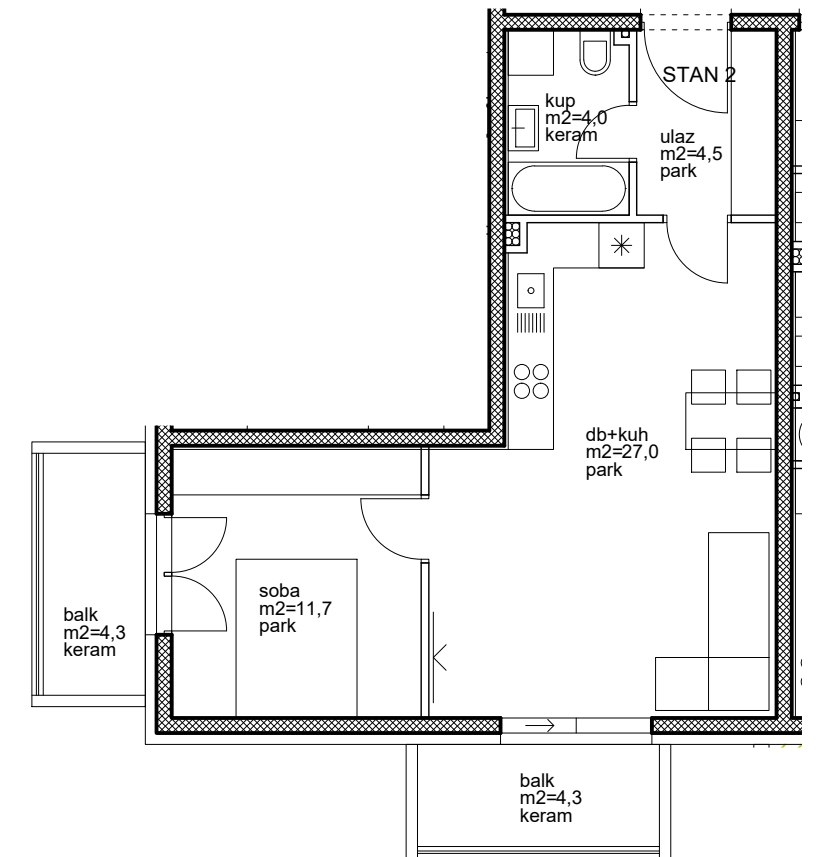
SITUACIJA



POLOŽAJ U ZGRADI, PRIZEMLJE

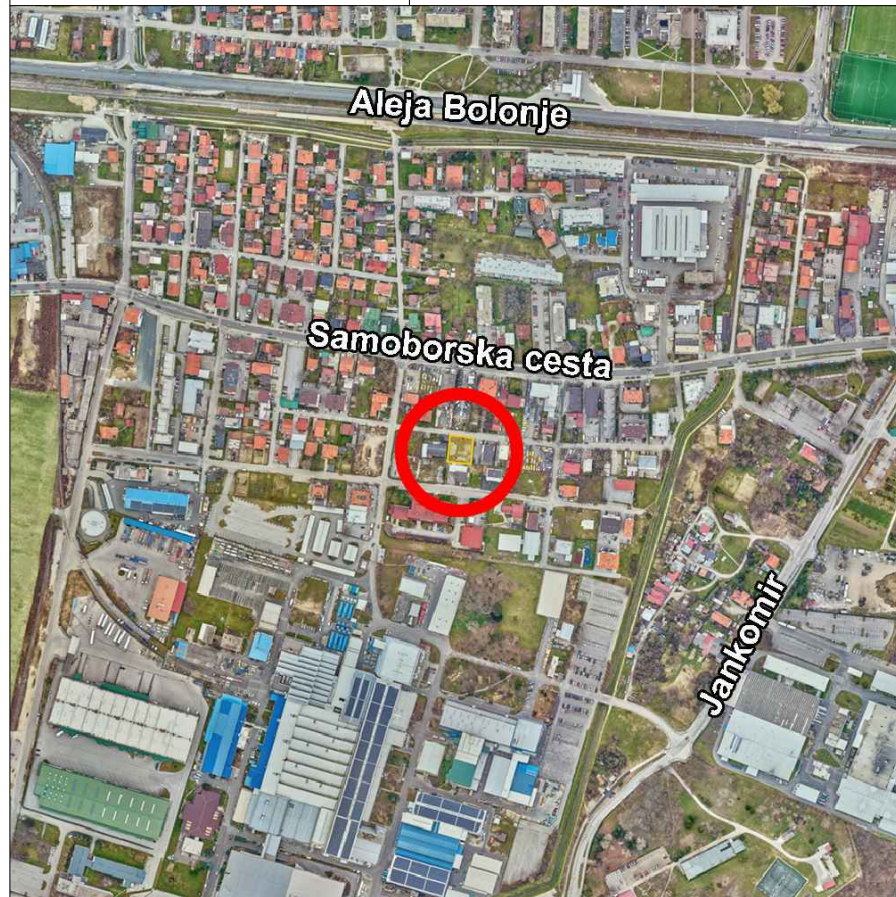


JUŽNO PROČELJE



MJ 1:100



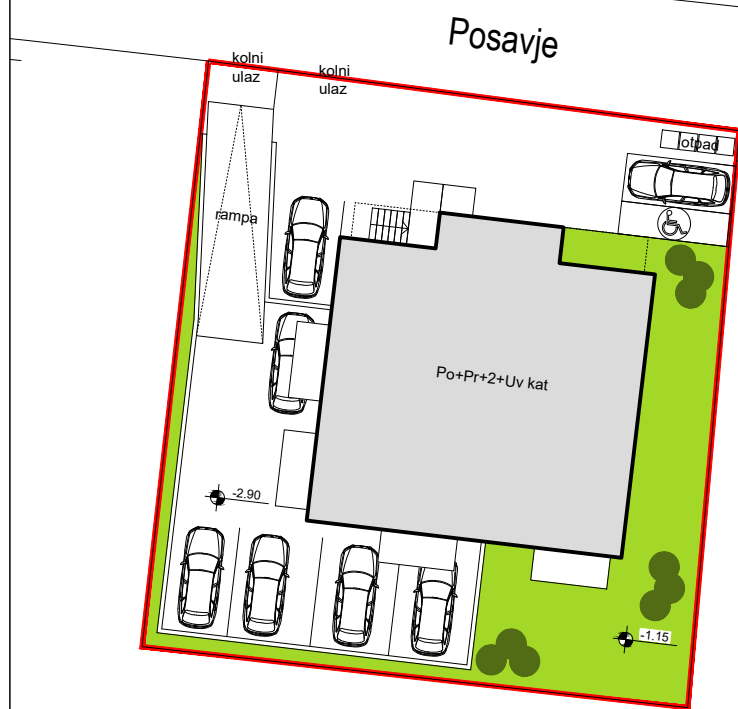


POLOŽAJ U GRADU



STAN 3	m ²	koef.	m ² sa koef
Ulaz	7,5	1,0	7,5
WC	1,7	1,0	1,7
Kupaona	4,0	1,0	4,0
Dnevni boravak + kuhinja	24,9	1,0	24,9
Soba	12,0	1,0	12,0
Soba	11,8	1,0	11,8
Balkon natkriveni	4,3	0,5	2,15
Vrt	80,0	0,1	8,0
UKUPNO STAN 3			72,05

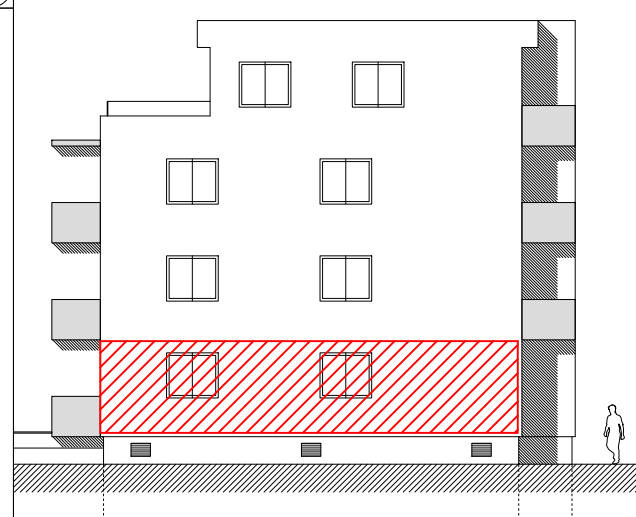
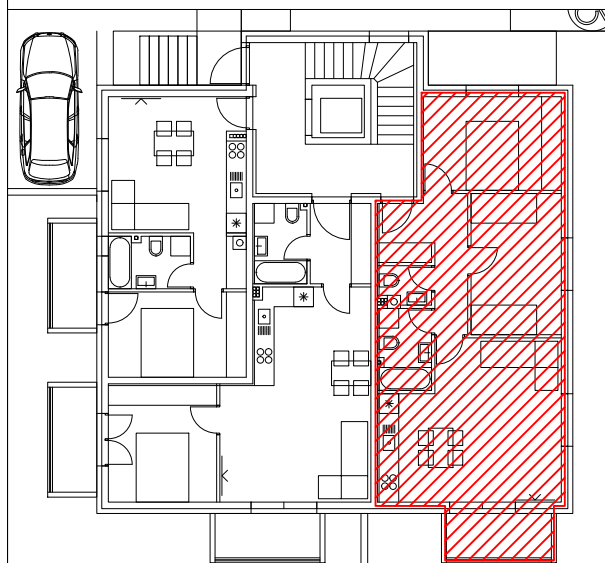
UZ STAN SE ZASEBNO PRODAJE SPREMIŠTE U PODRUMU I PARKING: VANJSKI ILI GARAŽNI.



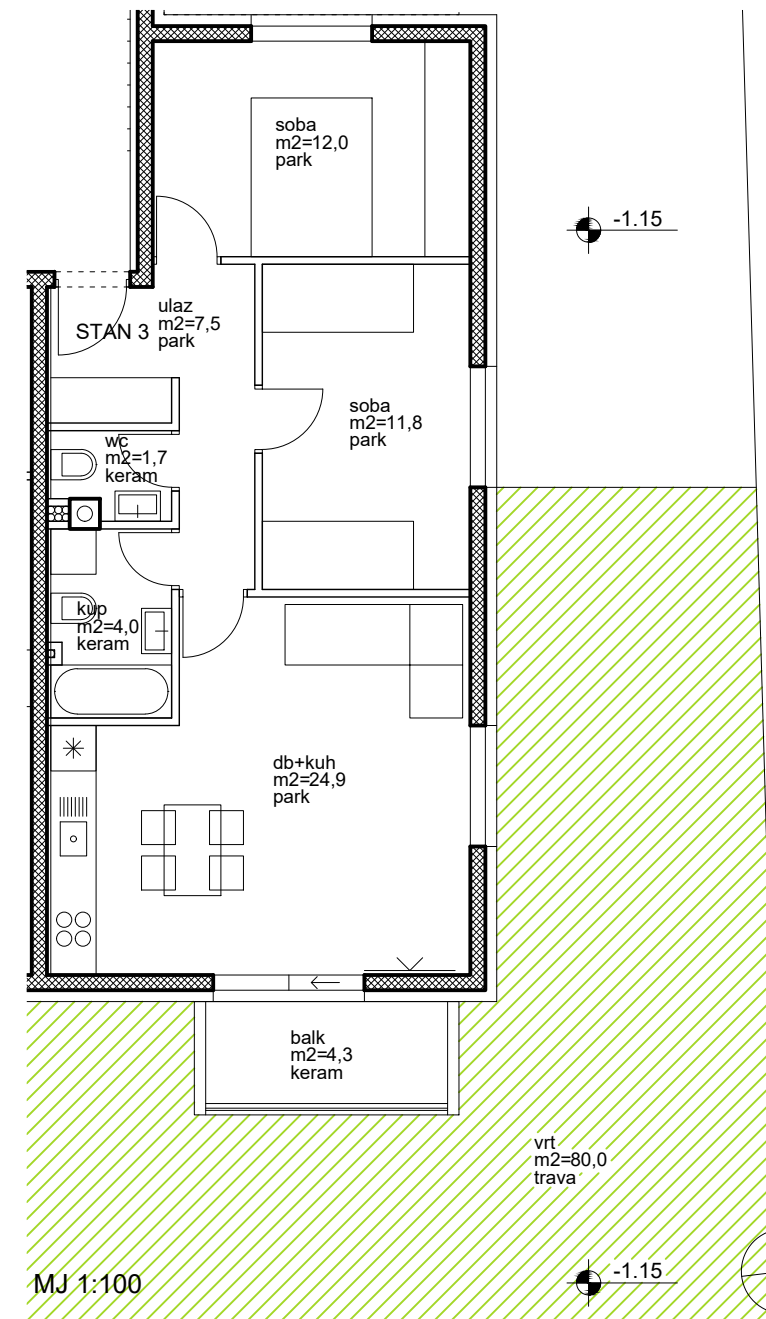
SITUACIJA



POLOŽAJ U ZGRADI, PRIZEMLJE



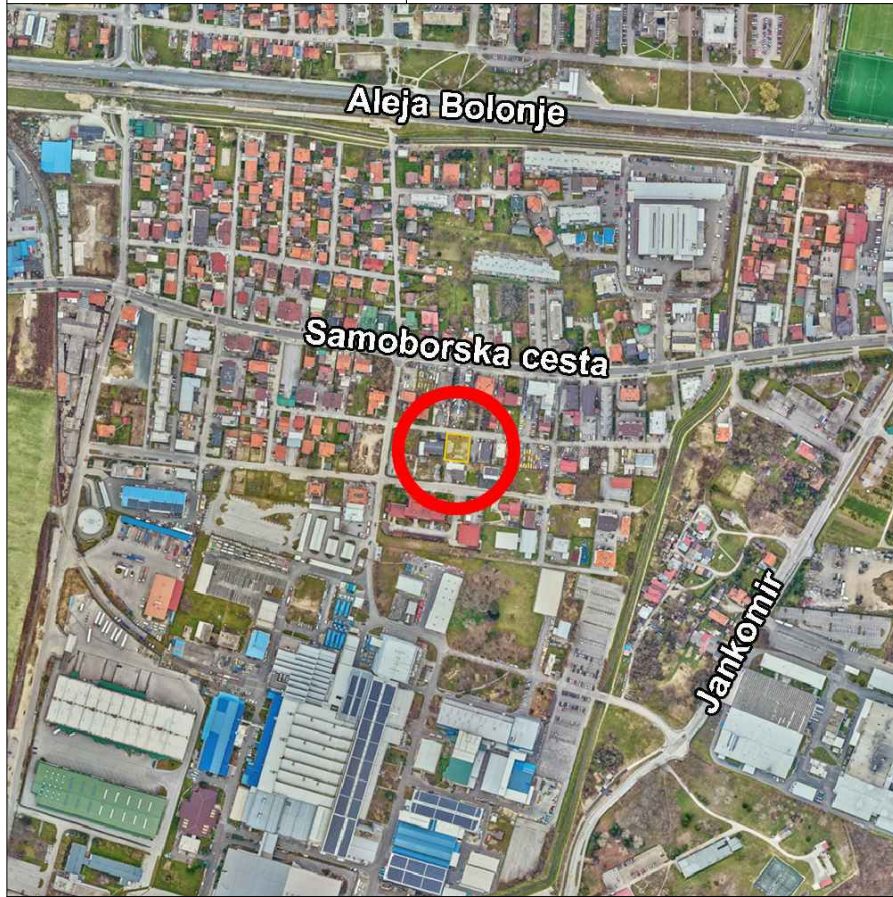
ISTOČNO PROČELJE



-1.15

-1.15





POLOŽAJ U GRADU

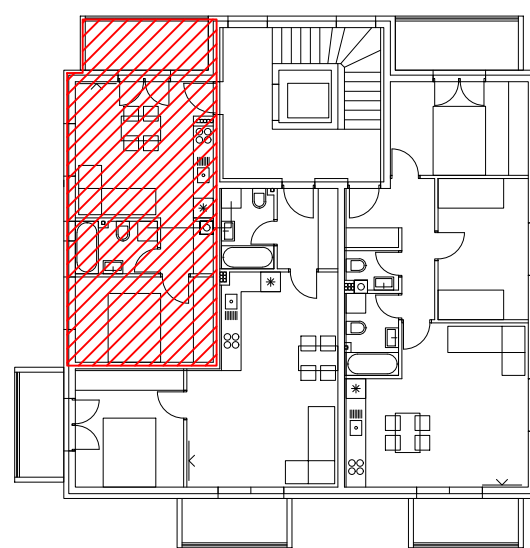


STAN 4	m ²	koef.	m ² sa koef
Dnevni boravak + kuhinja	17,4	1,0	17,4
Kupaona	4,0	1,0	4,0
Hodnik	2,4	1,0	2,4
Soba	10,9	1,0	10,9
Balkon natkriveni	5,6	0,50	2,8
UKUPNO STAN 4			37,50

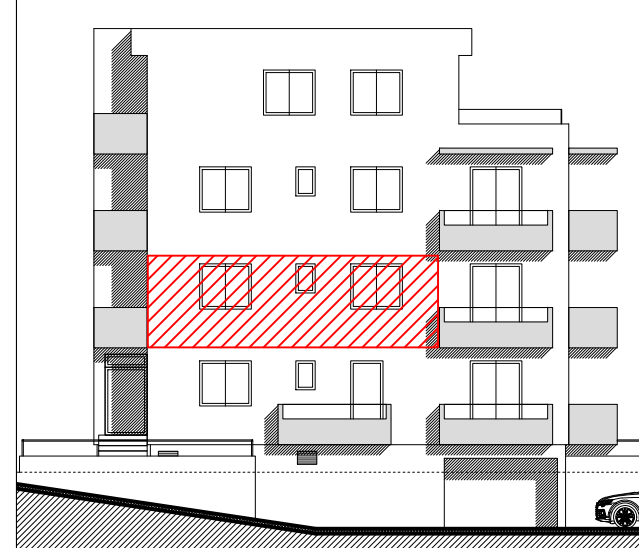
UZ STAN SE ZASEBNO PRODAJE SPREMIŠTE U PODRUMU I PARKING: VANJSKI ILI GARAŽNI.



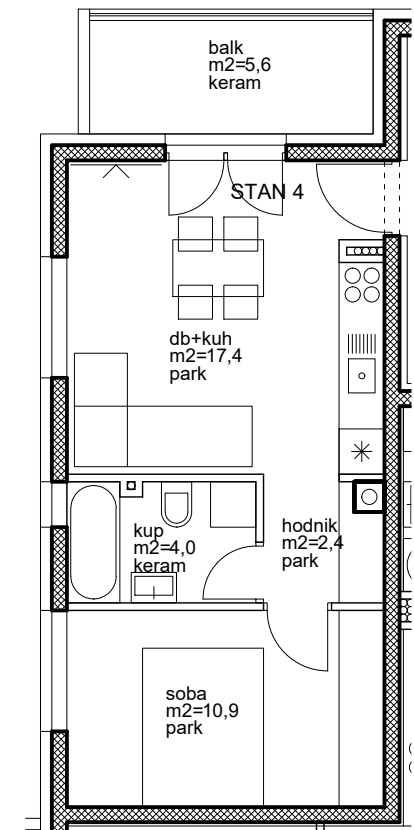
SITUACIJA



POLOŽAJ U ZGRADI, 1. KAT

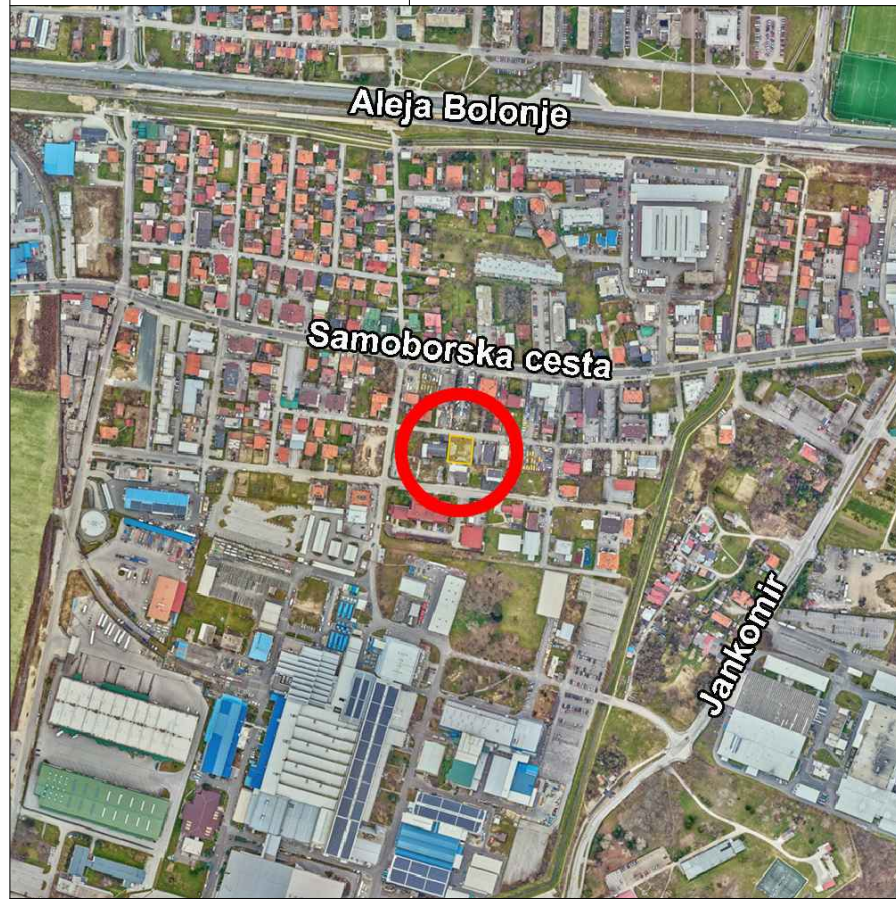


ZAPADNO PROČELJE



MJ 1:100



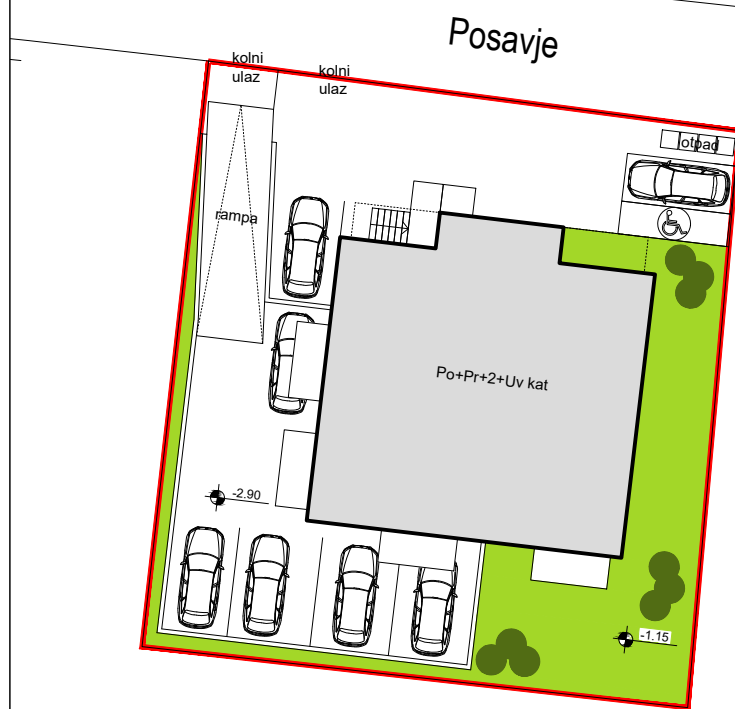


POLOŽAJ U GRADU

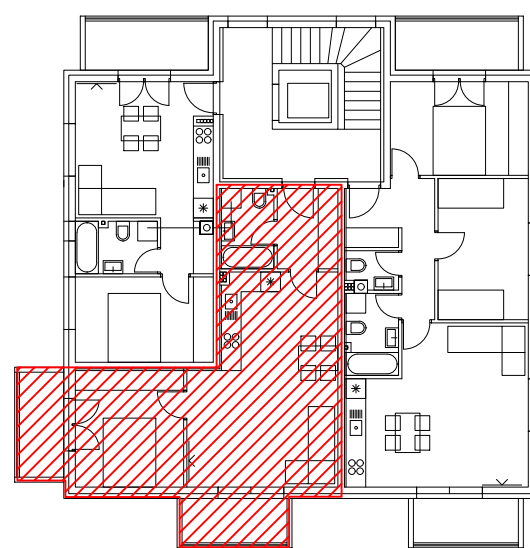


STAN 5	m ²	koef.	m ² sa koef
Ulaz	4,5	1,0	4,5
Kupaona	4,0	1,0	4,0
Dnevni boravak + kuhinja	27,0	1,0	27,0
Soba	11,7	1,0	11,7
Balkon natkriveni	4,3	0,5	2,15
Balkon natkriveni	4,3	0,5	2,15
UKUPNO STAN 5			51,50

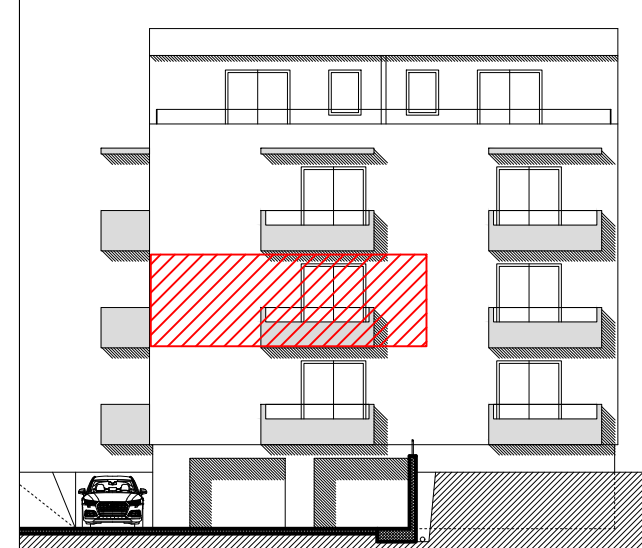
UZ STAN SE ZASEBNO PRODAJE SPREMIŠTE U PODRUMU I PARKING: VANJSKI ILI GARAŽNI.



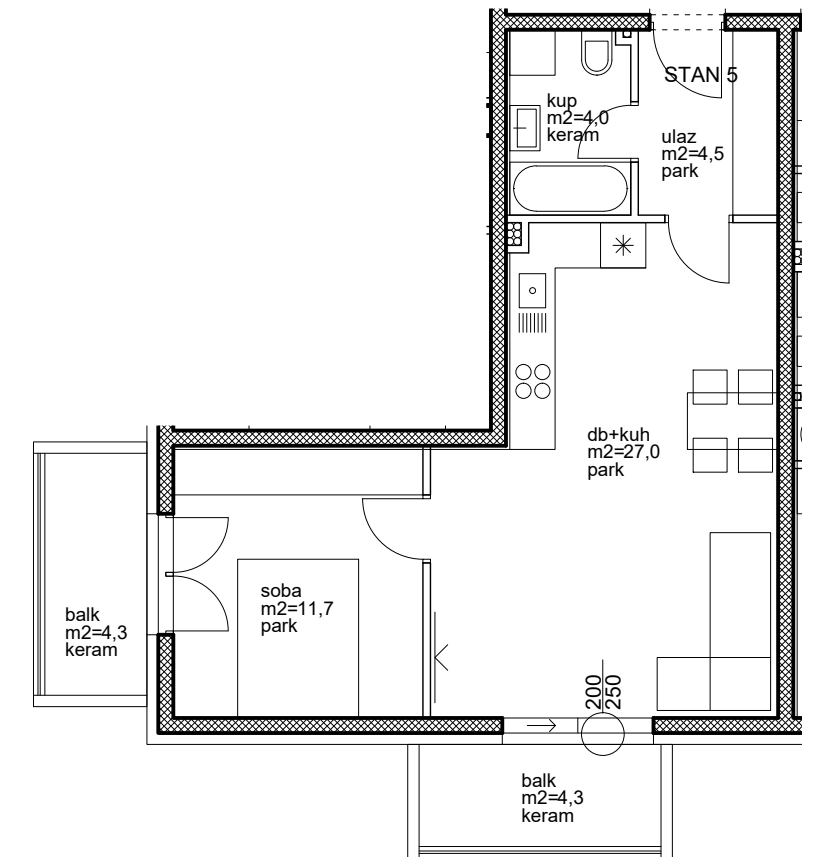
SITUACIJA



POLOŽAJ U ZGRADI, 1. KAT

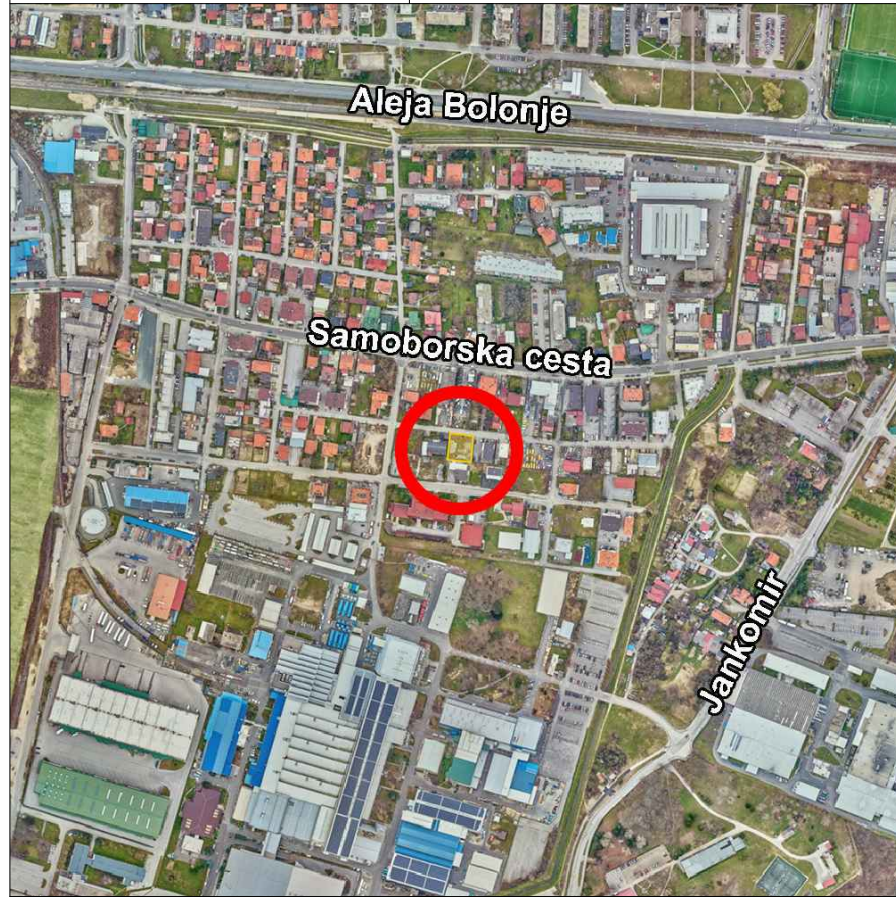


JUŽNO PROČELJE



MJ 1:100





POLOŽAJ U GRADU

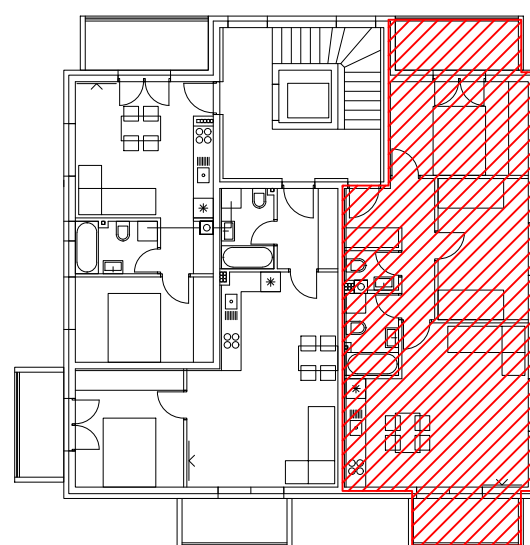


STAN 6	m ²	koef.	m ² sa koef
Ulaz	7,5	1,0	7,5
WC	1,7	1,0	1,7
Kupaona	4,0	1,0	4,0
Dnevni boravak + kuhinja	24,9	1,0	24,9
Soba	12,0	1,0	12,0
Soba	11,8	1,0	11,8
Balkon natkriveni	4,3	0,5	2,15
Balkon natkriveni	5,6	0,5	2,8
UKUPNO STAN 6			66,85

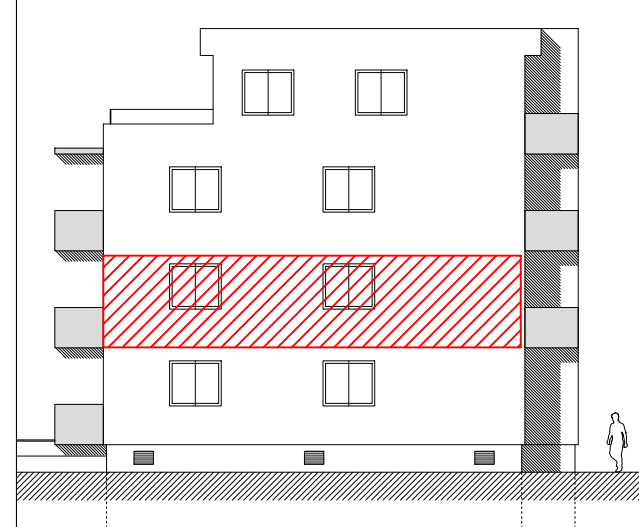
UZ STAN SE ZASEBNO PRODAJE SPREMIŠTE U PODRUMU I PARKING: VANJSKI ILI GARAŽNI.



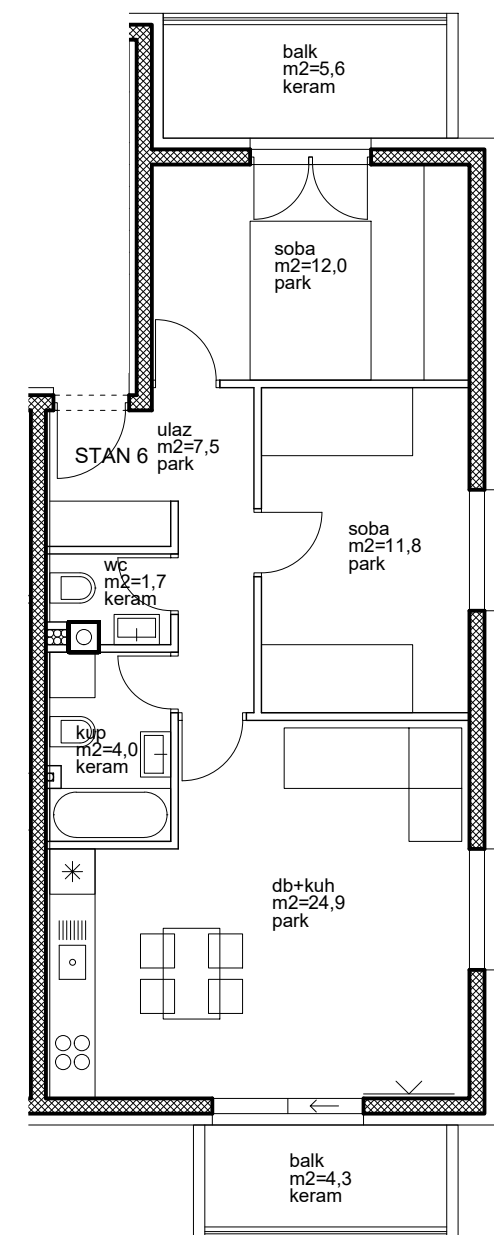
SITUACIJA



POLOŽAJ U ZGRADI, 1. KAT

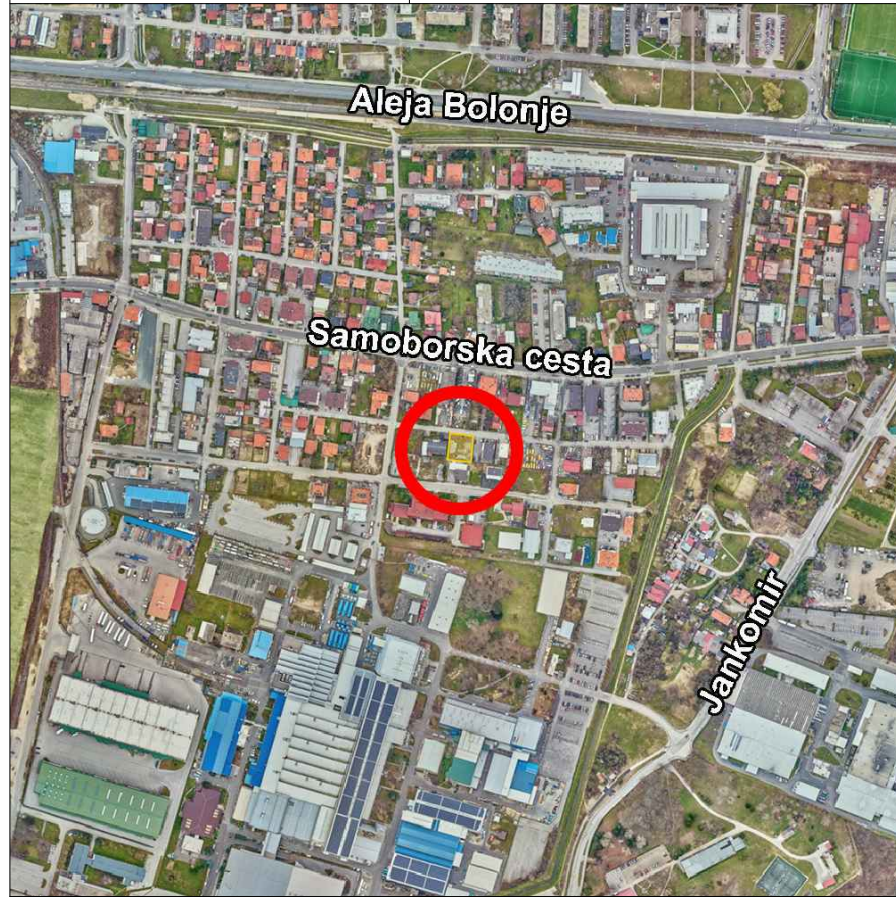


ISTOČNO PROČELJE



MJ 1:100



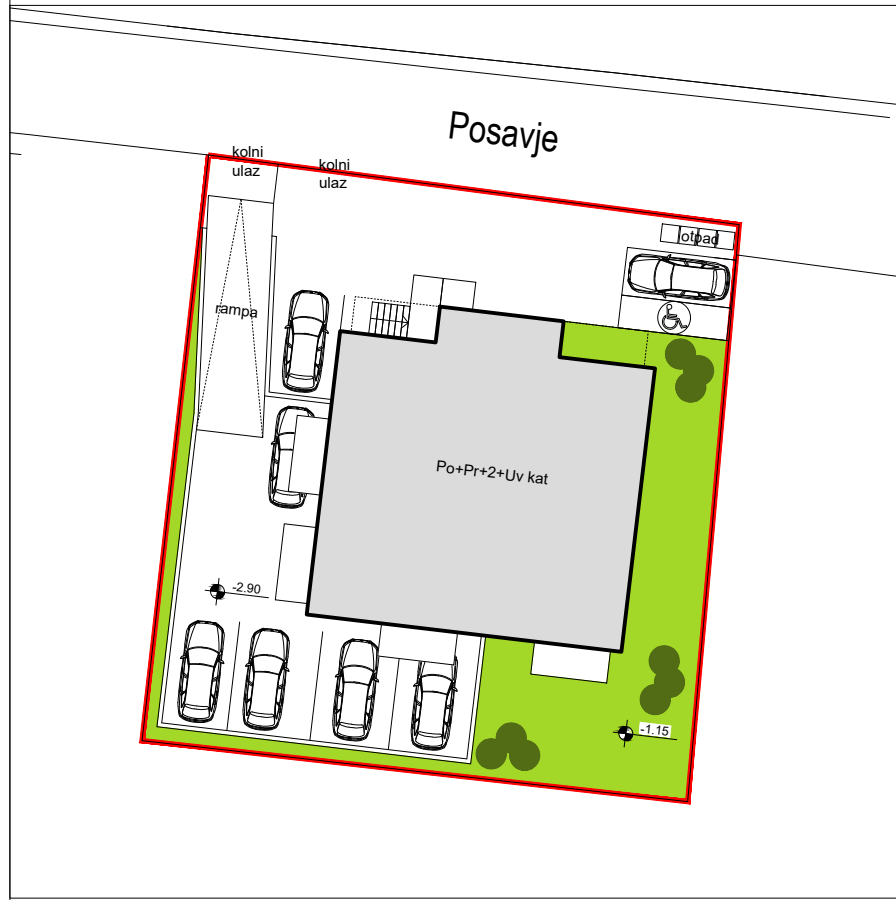


POLOŽAJ U GRADU

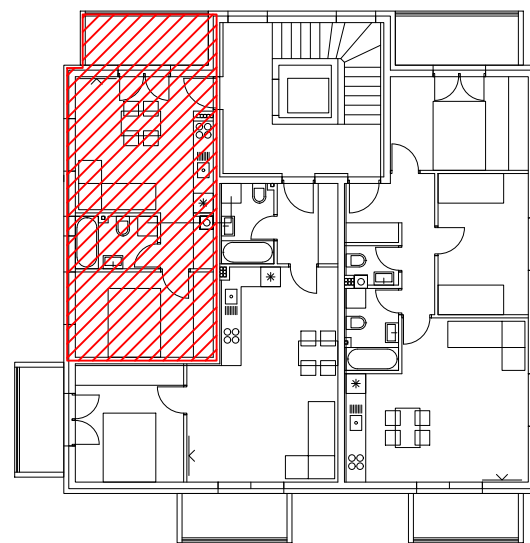


STAN 7	m ²	koef.	m ² sa koef
Dnevni boravak + kuhinja	17,4	1,0	17,4
Kupaona	4,0	1,0	4,0
Hodnik	2,4	1,0	2,4
Soba	10,9	1,0	10,9
Balkon natkriveni	5,6	0,50	2,8
UKUPNO STAN 7			37,50

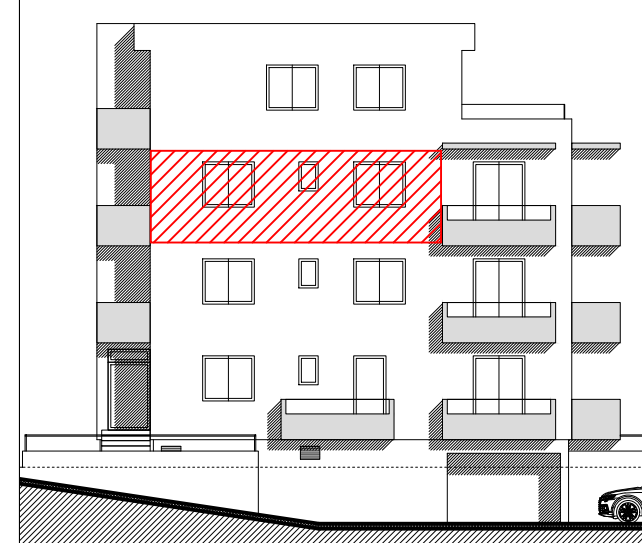
UZ STAN SE ZASEBNO PRODAJE SPREMIŠTE U PODRUMU I PARKING: VANJSKI ILI GARAŽNI.



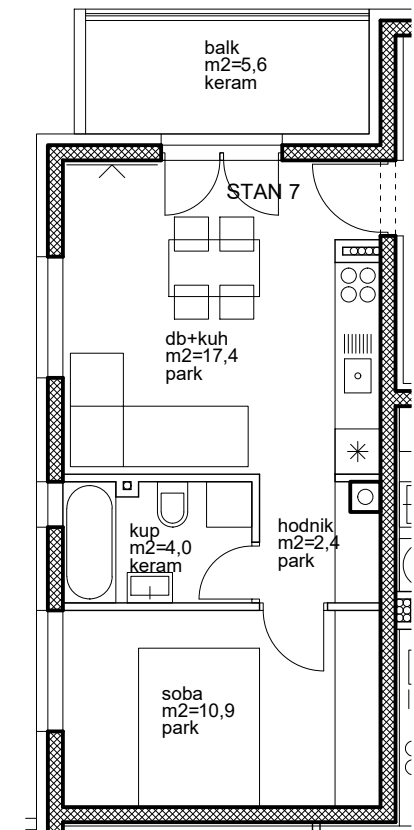
SITUACIJA



POLOŽAJ U ZGRADI, 2. KAT

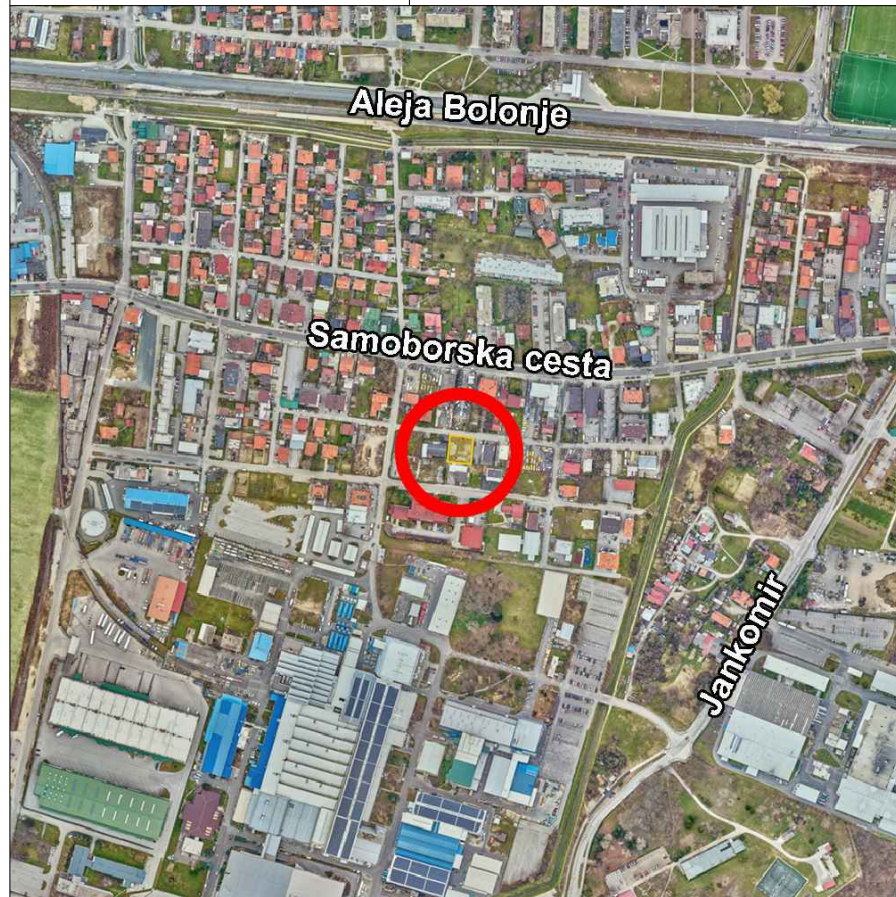


ZAPADNO PROČELJE



MJ 1:100



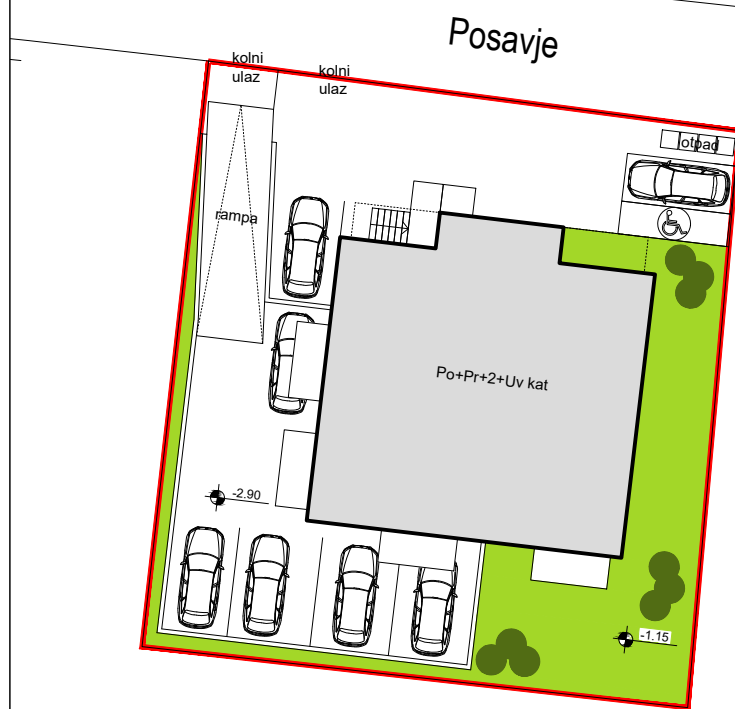


POLOŽAJ U GRADU

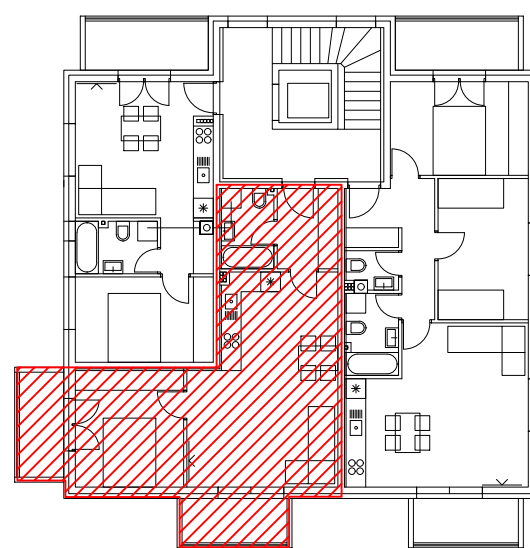


STAN 8	m ²	koef.	m ² sa koef
Ulaz	4,5	1,0	4,5
Kupaona	4,0	1,0	4,0
Dnevni boravak + kuhinja	27,0	1,0	27,0
Soba	11,7	1,0	11,7
Balkon natkriveni	4,3	0,5	2,15
Balkon natkriveni	4,3	0,5	2,15
UKUPNO STAN 8			51,50

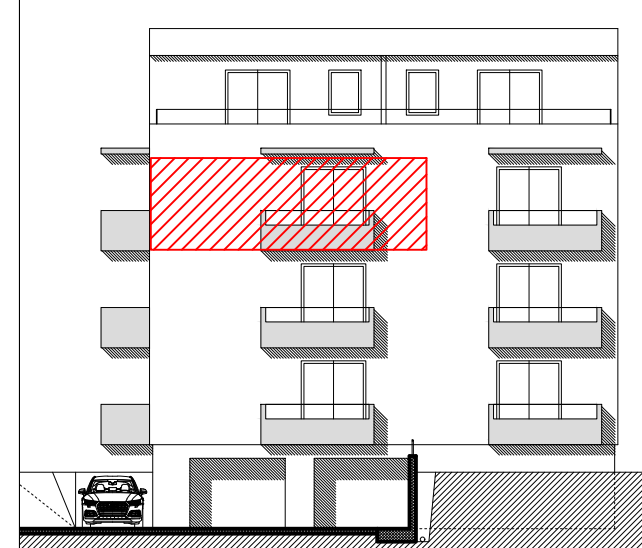
UZ STAN SE ZASEBNO PRODAJE SPREMIŠTE U PODRUMU I PARKING: VANJSKI ILI GARAŽNI.



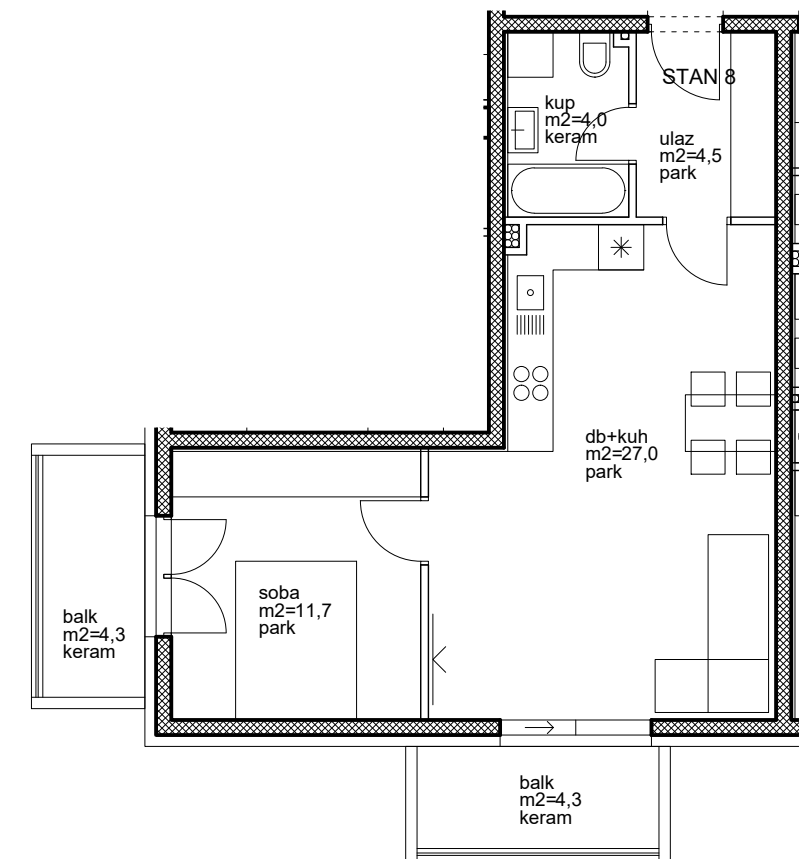
SITUACIJA



POLOŽAJ U ZGRADI, 2. KAT

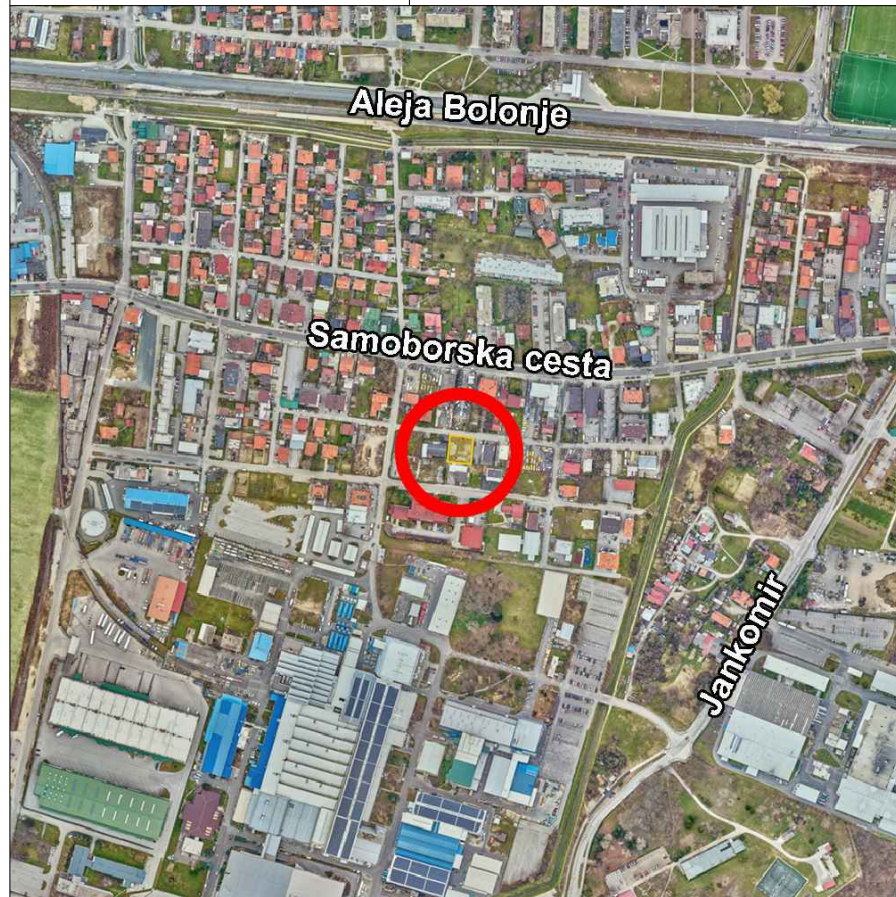


JUŽNO PROČELJE



MJ 1:100



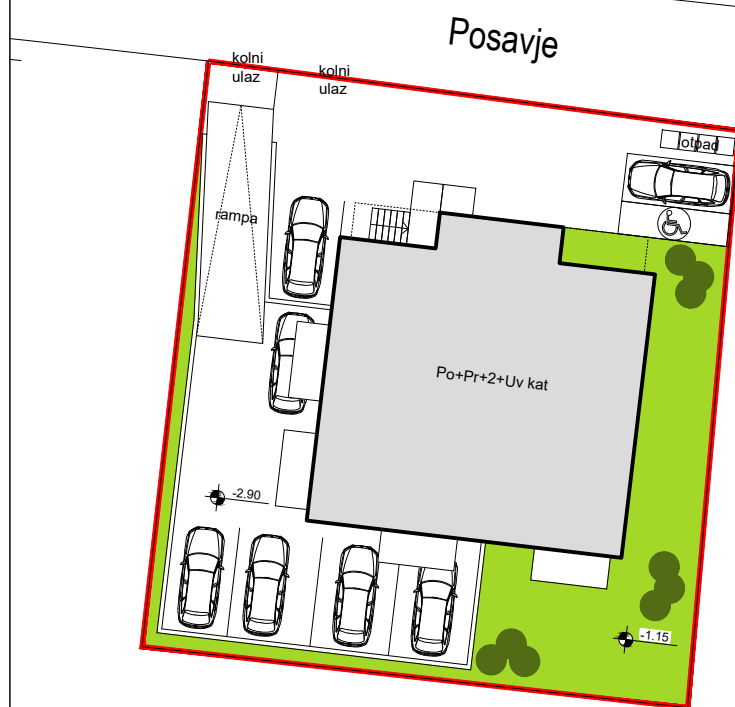


POLOŽAJ U GRADU

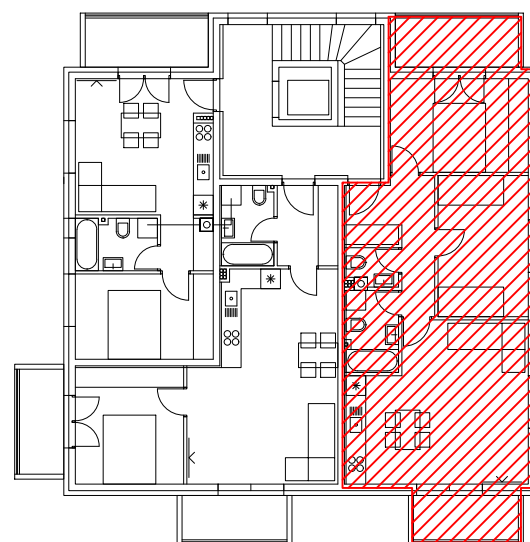


STAN 9	m ²	koef.	m ² sa koef
Ulaz	7,5	1,0	7,5
WC	1,7	1,0	1,7
Kupaona	4,0	1,0	4,0
Dnevni boravak + kuhinja	24,9	1,0	24,9
Soba	12,0	1,0	12,0
Soba	11,8	1,0	11,8
Balkon natkriveni	4,3	0,5	2,15
Balkon natkriveni	5,6	0,5	2,8
UKUPNO STAN 9			66,85

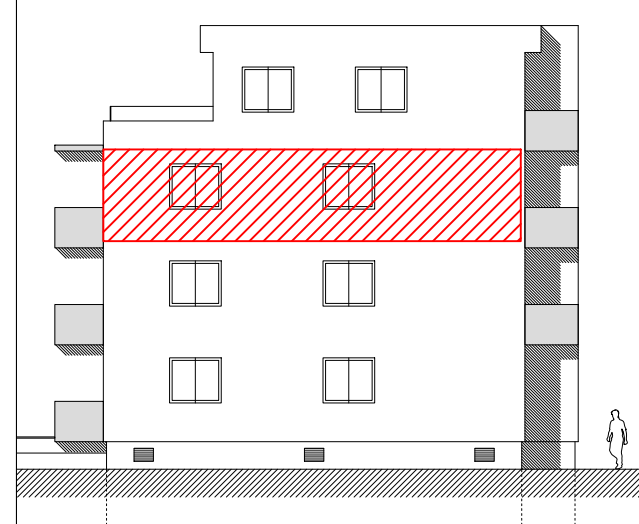
UZ STAN SE ZASEBNO PRODAJE SPREMIŠTE U PODRUMU I PARKING: VANJSKI ILI GARAŽNI.



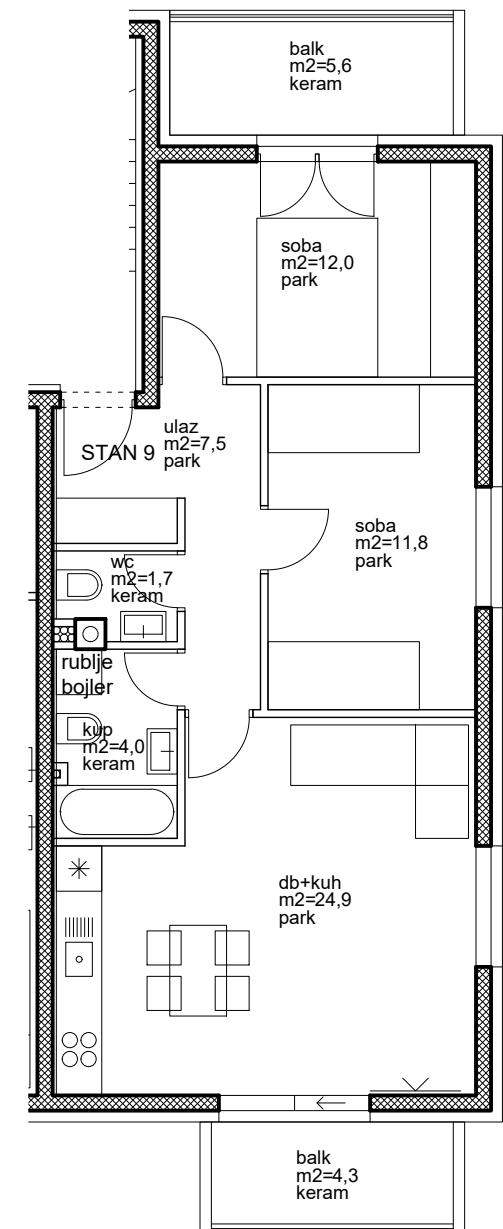
SITUACIJA



POLOŽAJ U ZGRADI, 2. KAT

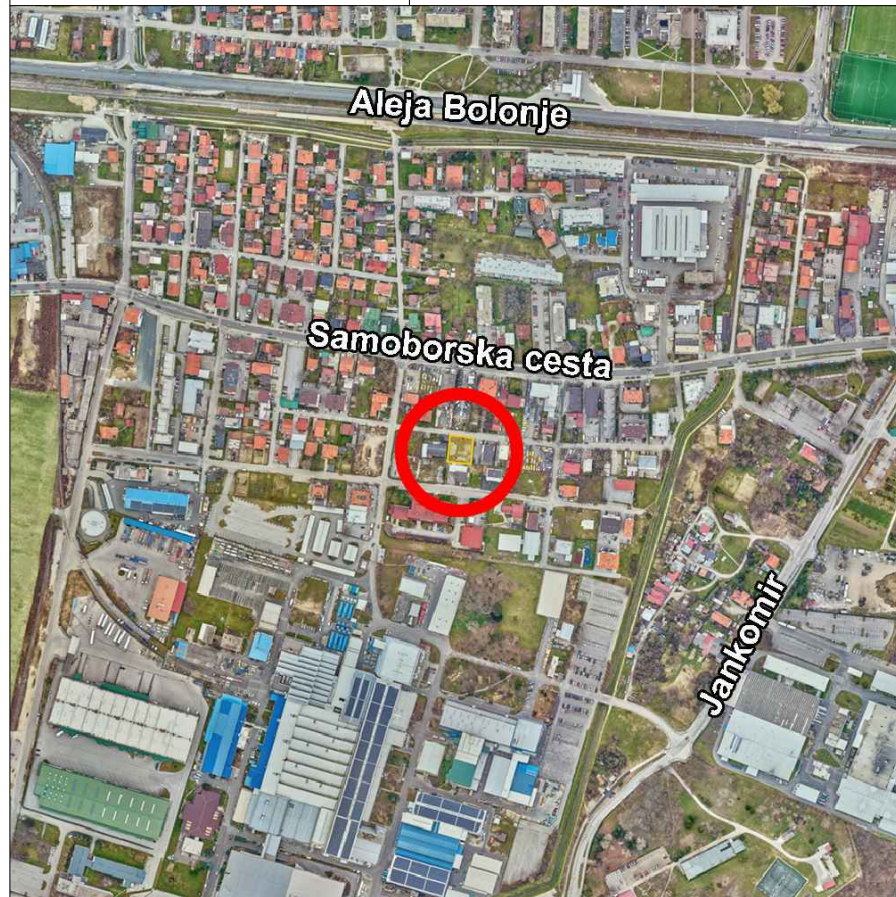


ISTOČNO PROČELJE



MJ 1:100



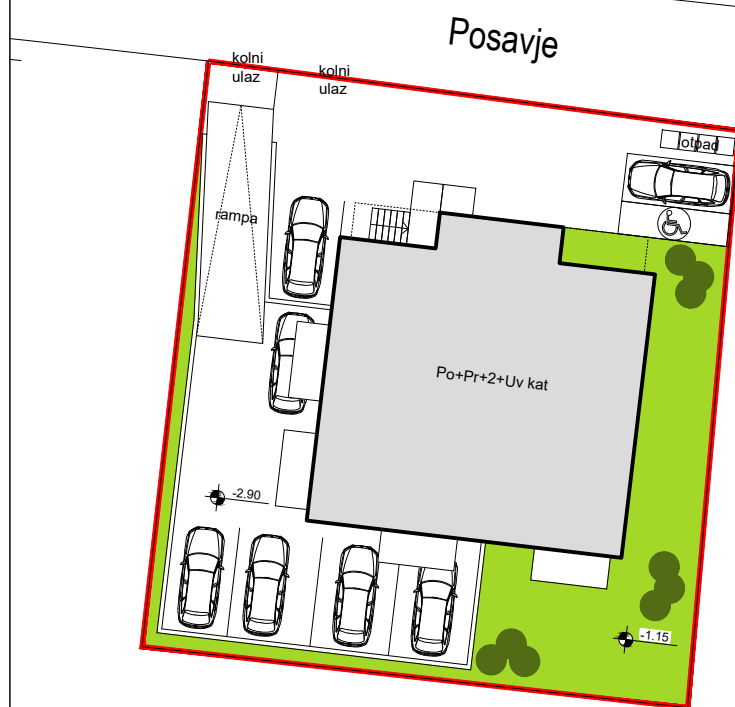


POLOŽAJ U GRADU

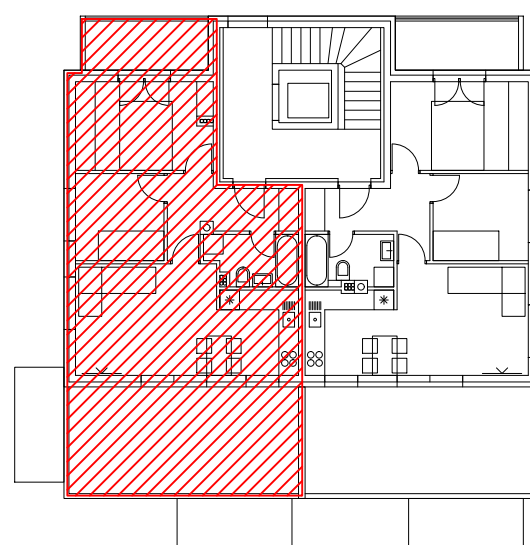


STAN 10	m ²	koef.	m ² sa koef
Ulaz	6,6	1,0	6,6
Kupaona	4,1	1,0	4,1
Dnevni boravak + kuhinja	21,1	1,0	21,1
Soba	11,3	1,0	11,3
Soba	7,2	1,0	7,2
Balkon nenatkriveni	5,6	0,25	1,4
Terasa nenatkrivena	22,8	0,25	5,7
UKUPNO STAN 10			57,40

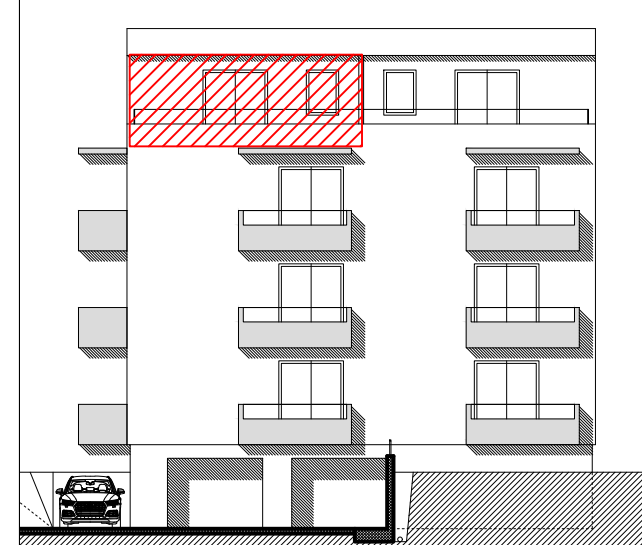
UZ STAN SE ZASEBNO PRODAJE SPREMIŠTE U PODRUMU I PARKING: VANJSKI ILI GARAŽNI.



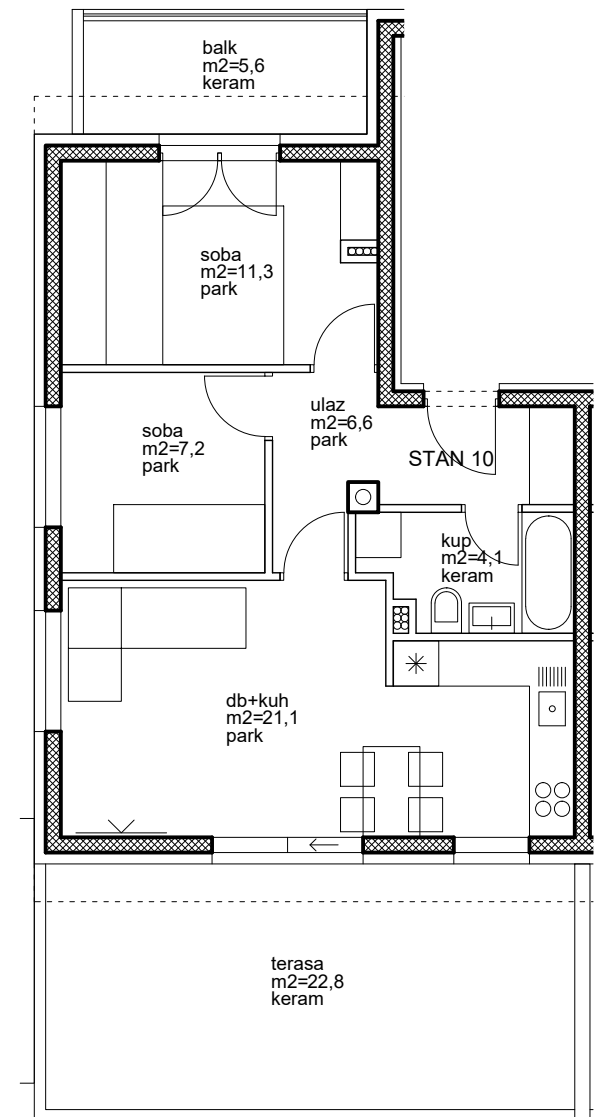
SITUACIJA



POLOŽAJ U ZGRADI, 3. KAT

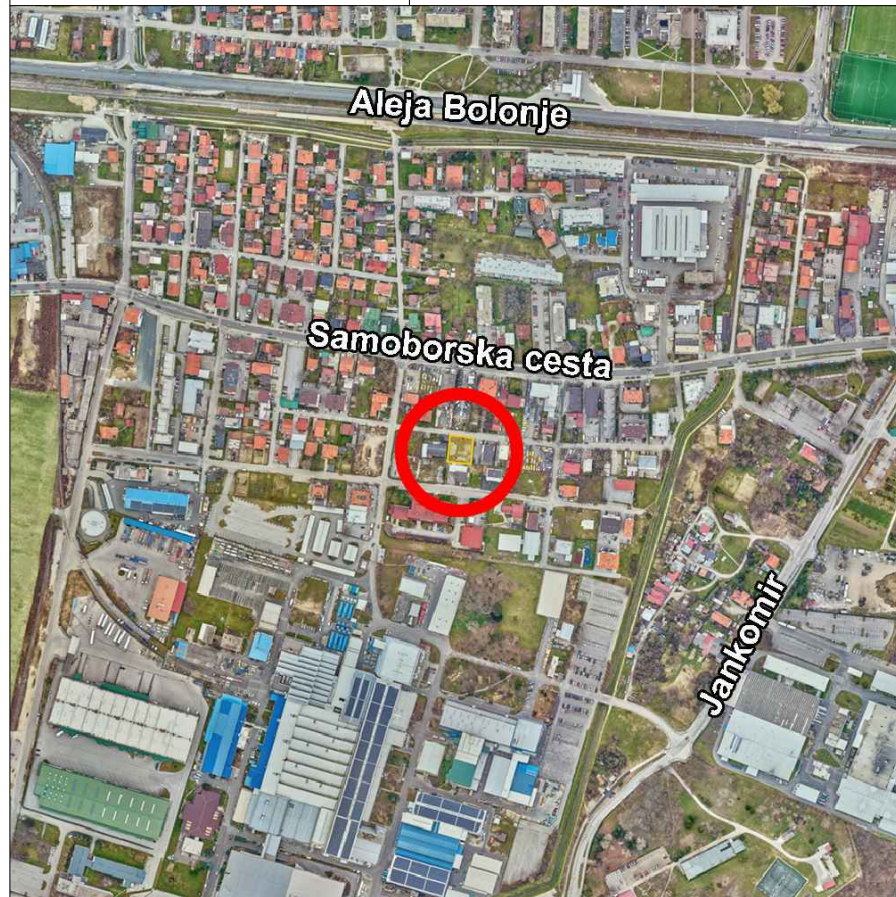


JUŽNO PROČELJE



MJ 1:100



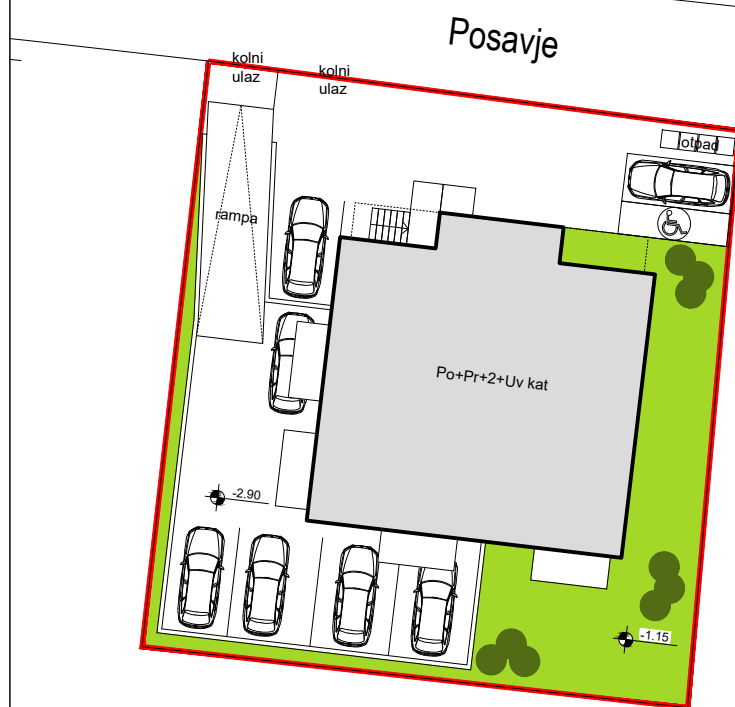


POLOŽAJ U GRADU

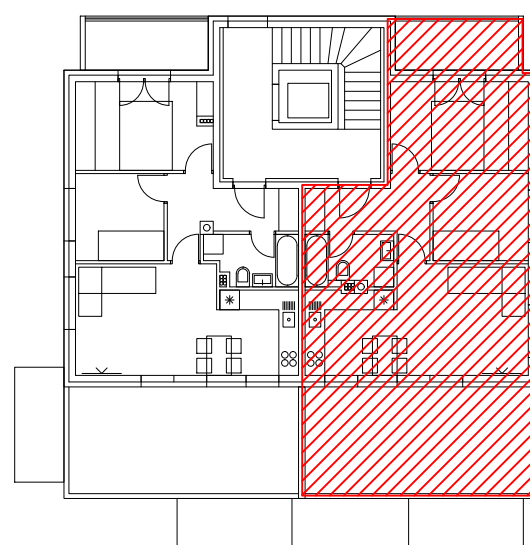


STAN 11	m ²	koef.	m ² sa koef
Ulaz	6,4	1,0	6,4
Kupaona	4,2	1,0	4,2
Dnevni boravak + kuhinja	20,8	1,0	20,8
Soba	11,3	1,0	11,3
Soba	7,2	1,0	7,2
Balkon nenatkriveni	5,6	0,25	1,4
Terasa nenatkrivena	22,8	0,25	5,7
UKUPNO STAN 11			57,00

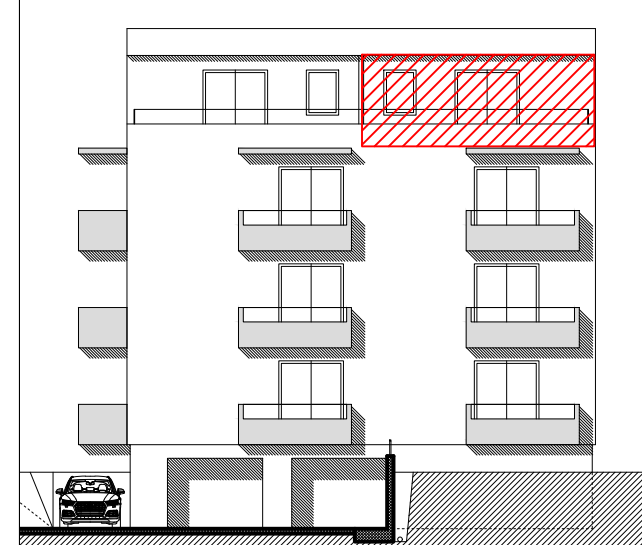
UZ STAN SE ZASEBNO PRODAJE SPREMIŠTE U PODRUMU I PARKING: VANJSKI ILI GARAŽNI.



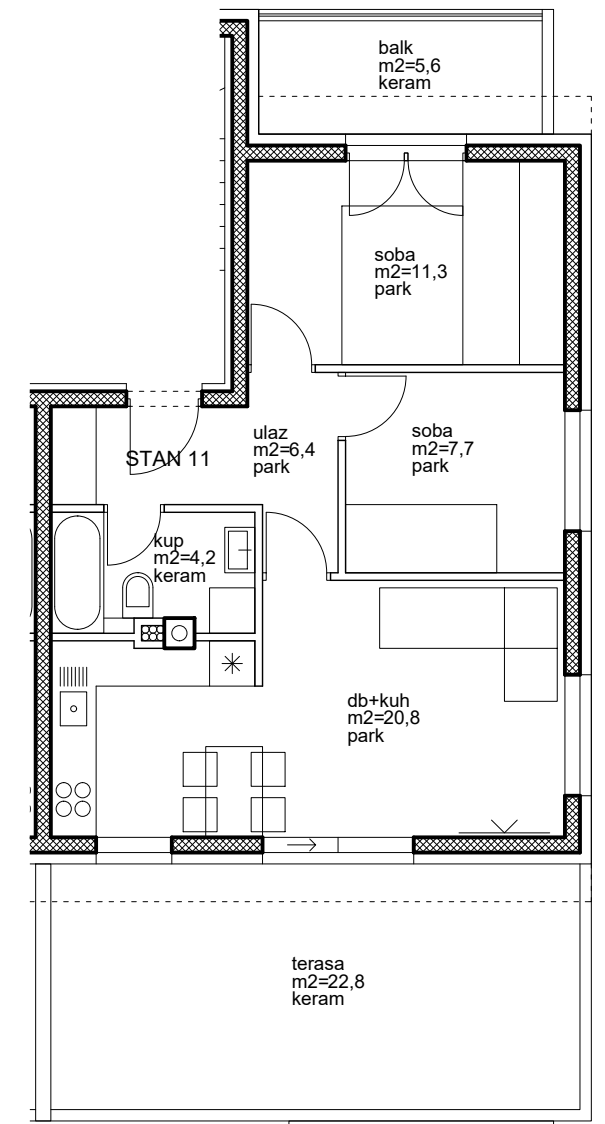
SITUACIJA



POLOŽAJ U ZGRADI, 3. KAT

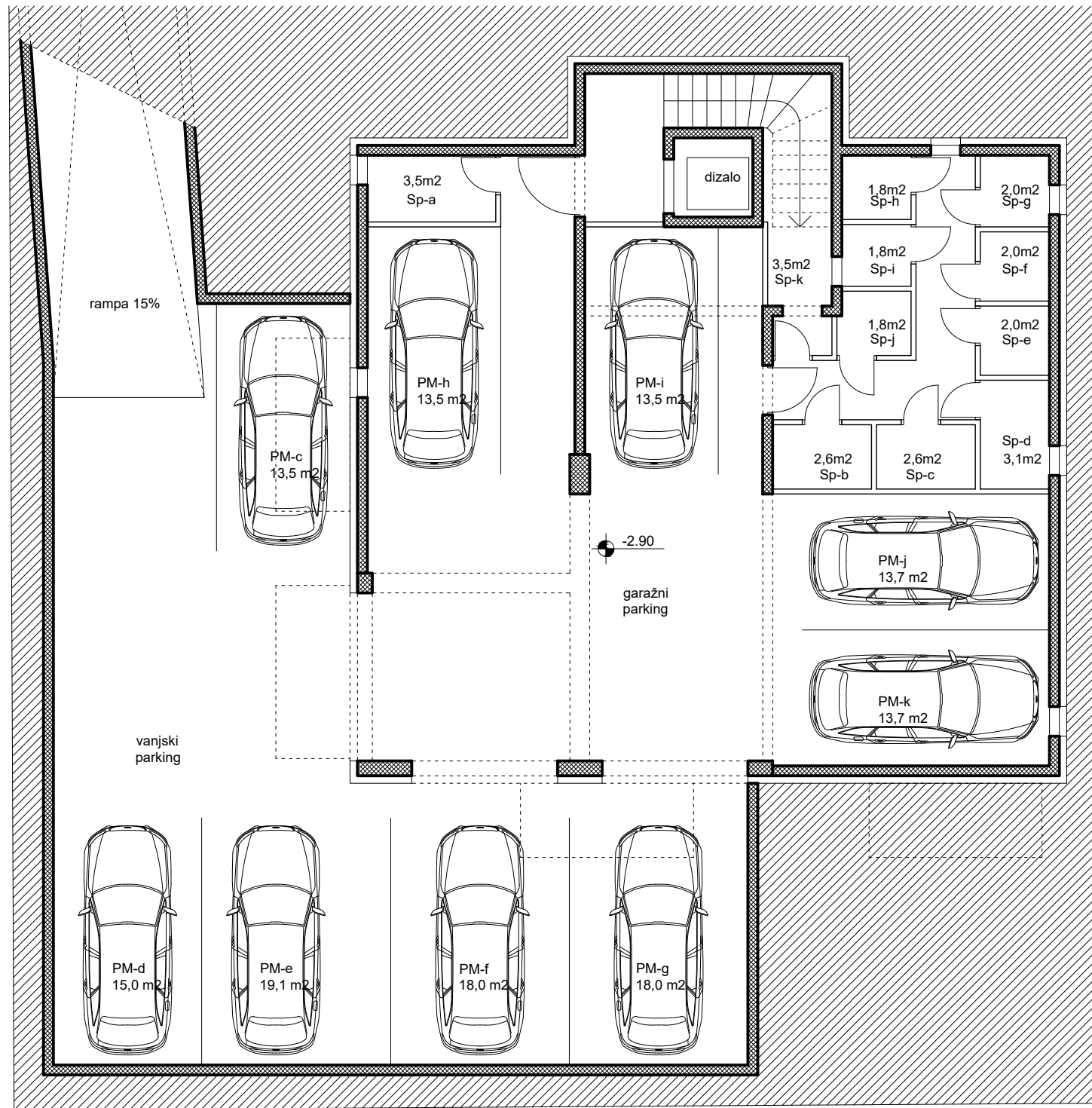


JUŽNO PROČELJE



MJ 1:100

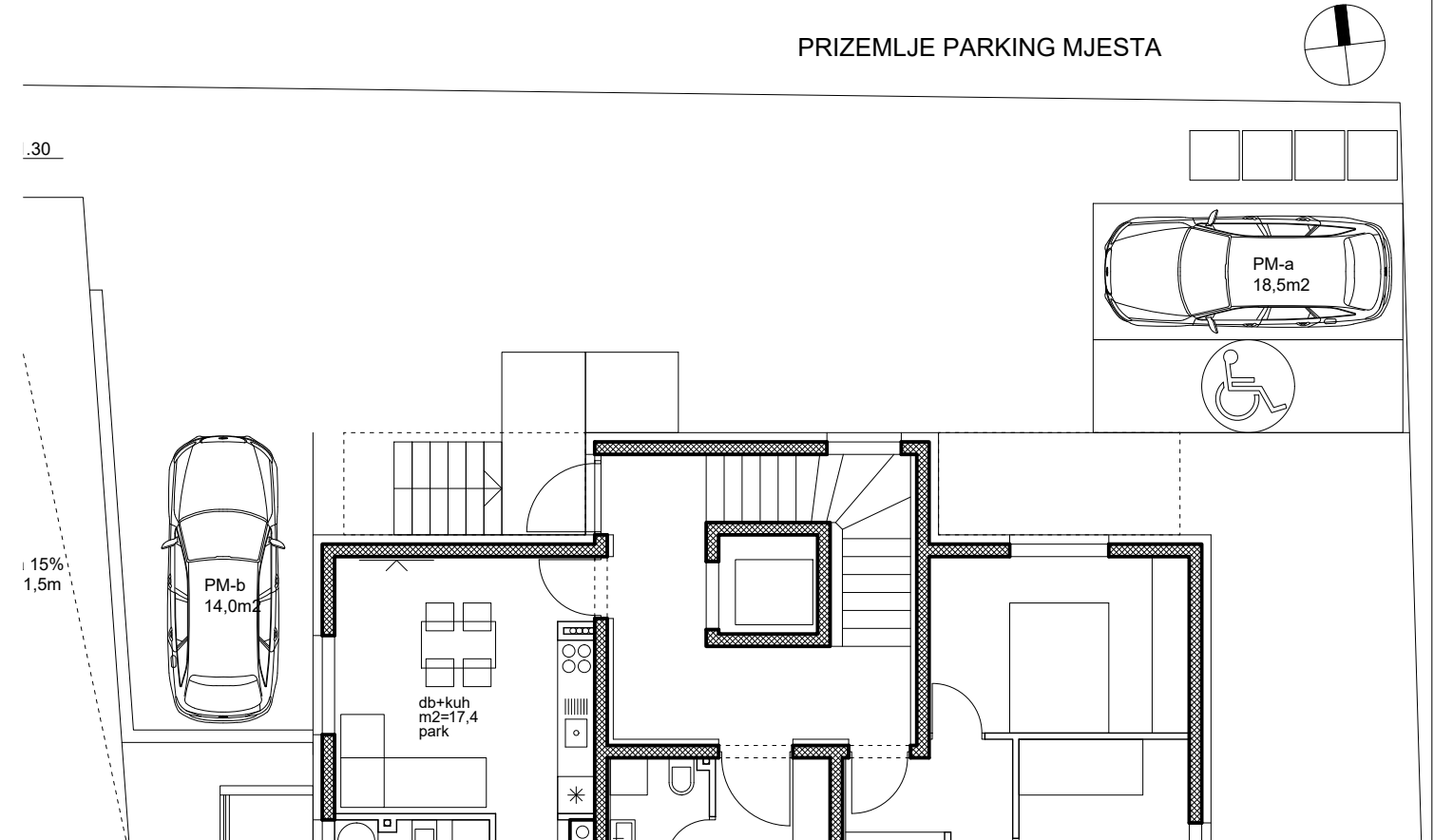




PODRUM - SPREMIŠTA I PARKING MJESTA

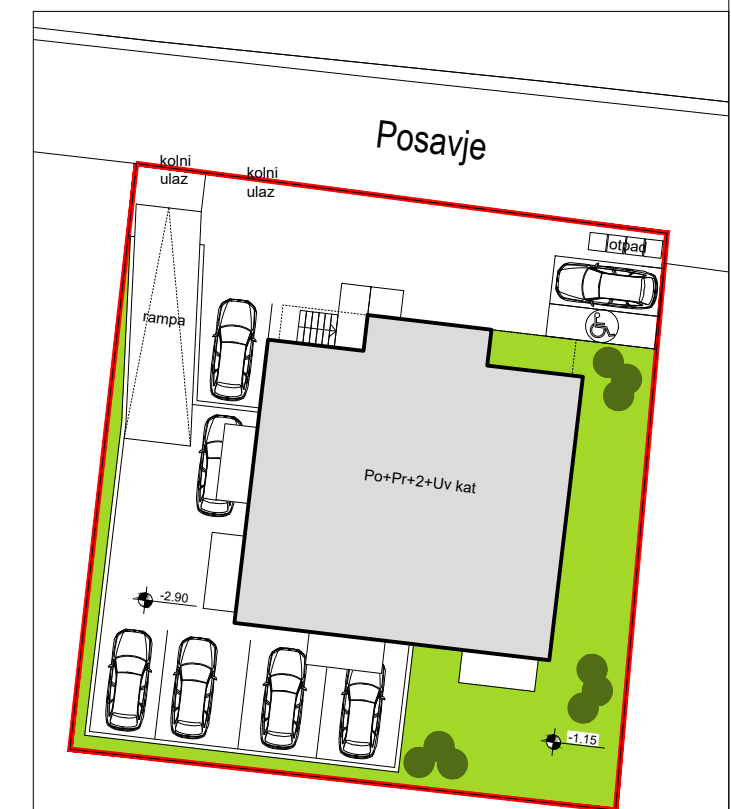


PRIZEMLJE PARKING MJESTA



	m ²	koef.	m ² sa koef.
Spremište A	3,5	0,5	1,75
Spremište B	2,6	0,5	1,3
Spremište C	2,6	0,5	1,3
Spremište D	3,1	0,5	1,55
Spremište E	2,0	0,5	1,0
Spremište F	2,0	0,5	1,0
Spremište G	2,0	0,5	1,0
Spremište H	1,8	0,5	0,9
Spremište I	1,8	0,5	0,9
Spremište J	1,8	0,5	0,9
Spremište K	3,5	0,5	1,75

	m ²	koef.	m ² sa koef.
Parking A	18,5	0,2	3,7
Parking B	14,0	0,2	2,8
Parking C	13,5	0,2	2,7
Parking D	15,0	0,2	3,0
Parking E	19,1	0,2	3,82
Parking F	18,0	0,2	3,6
Parking G	18,0	0,2	3,6
Parking garaža H	13,5	0,5	6,75
Parking garaža I	13,5	0,5	6,75
Parking garaža J	13,7	0,5	6,85
Parking garaža K	13,7	0,5	6,85



SITUACIJA

