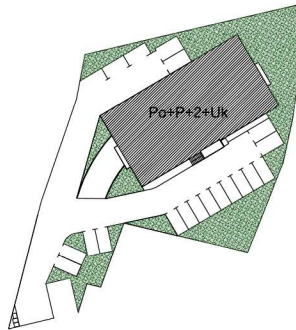
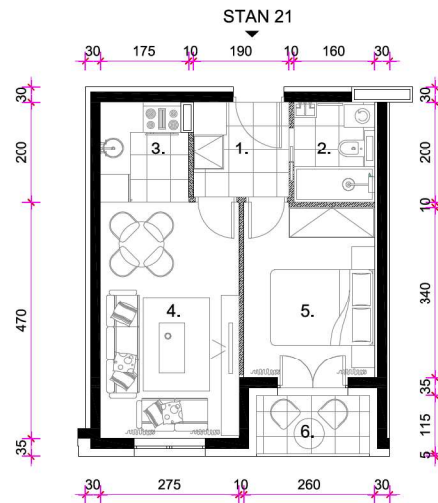


TLOCRT PARCELE

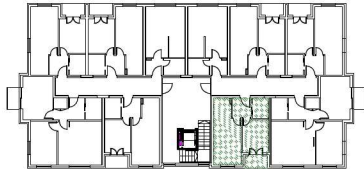


STAN S21 drugi kat

TLOCRT STANA S21



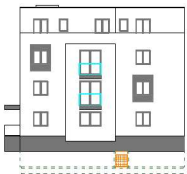
TLOCRT 2. KATA



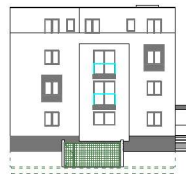
STAN 21					
1.	ULAZ	parket	3,61	1,00	3,61
2.	KUPAONA	ker.pl.	3,20	1,00	3,20
3.	KUHINJA	ker.pl.	3,40	1,00	3,40
4.	KUH., BLA. I DB	parket	12,69	1,00	12,69
5.	SOBA	parket	8,93	1,00	8,93
6.	LOGGIA	ker.pl.	2,70	0,75	2,03
STAN 21 UKUPNO:					33,86



SJEVEROISTOČNO PROČELJE



JUGOZAPADNO PROČELJE



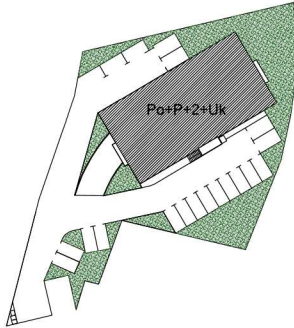
JUGOISTOČNO PROČELJE



SJEVEROZAPADNO PROČELJE



TLOCRT PARCELE

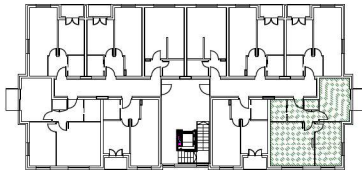


STAN S22 drugi kat

TLOCRT STANA S22



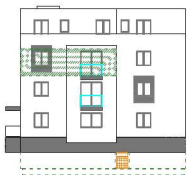
TLOCRT 2. KATA



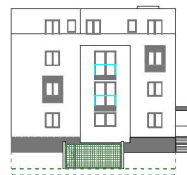
STAN 22					
1.	ULAZ	parket	5,04	1,00	5,04
2.	KUPAONA	ker. pl.	3,44	1,00	3,44
3.	OSTAVA	ker. pl.	1,42	1,00	1,42
4.	KUH., BLA. I DB	parket	19,29	1,00	19,29
5.	SOBA	parket	11,57	1,00	11,57
6.	SOBA	parket	12,72	1,00	12,72
7.	BALKON	ker. pl.	2,61	0,25	0,65
STAN 22 UKUPNO:					54,13



SJEVEROISTOČNO PROČELJE



JUGOZAPADNO PROČELJE



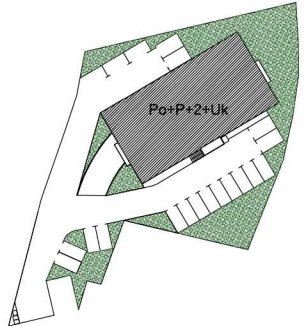
JUGOISTOČNO PROČELJE



SJEVEROZAPADNO PROČELJE

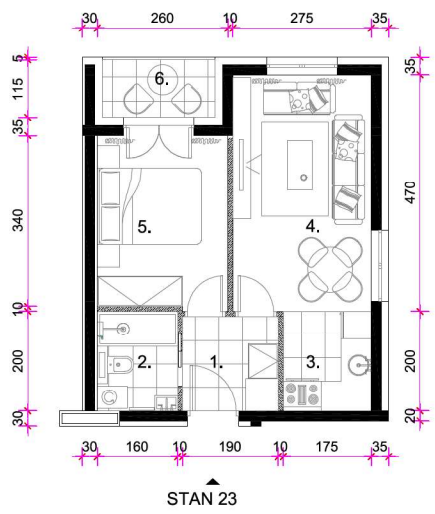


TLOCRT PARCELE

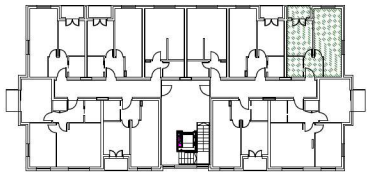


STAN S23 drugi kat

TLOCRT STANA S23



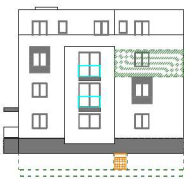
TLOCRT 2. KATA



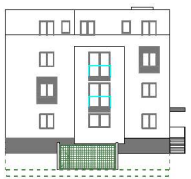
STANJE					
1.	ULAZ	parket	3.61	1,00	3.61
2.	KUPAONA	ker.pl.	3.20	1,00	3.20
3.	KUHINJA	ker.pl.	3.50	1,00	3.50
4.	KUH. BLA. I DB	parket	12.92	1,00	12.92
5.	SOBA	parket	8.93	1,00	8.93
6.	LOGGIA	ker.pl.	2.70	0,75	2.03
STAN 23 UKUPNO:					34.19



SJEVEROISTOČNO PROČELJE



JUGOZAPADNO PROČELJE



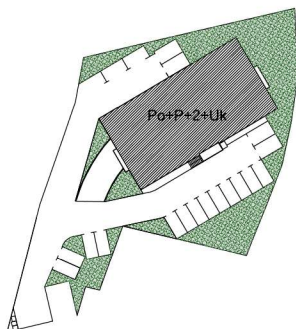
JUGOISTOČNO PROČELJE



SJEVEROZAPADNO PROČELJE

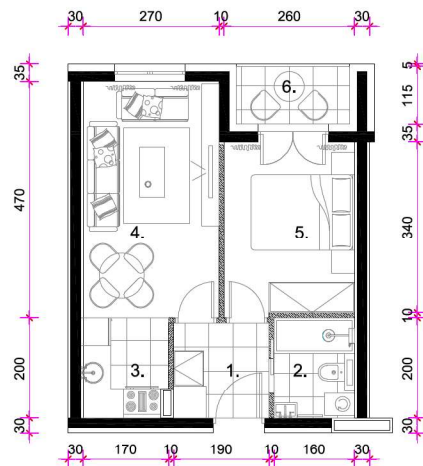


TLOCRT PARCELE



STAN S24 drugi kat

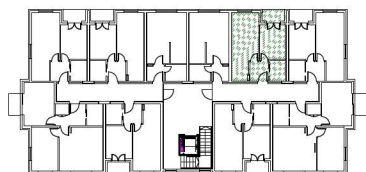
TLOCRT STANA S24



STAN 24



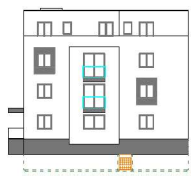
TLOCRT 2. KATA



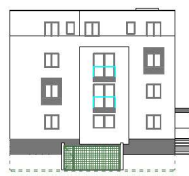
STAN 24					
1.	ULAZ	ker.pl.	3.61	1.00	3.61
2.	KUPAONA	ker.pl.	3.20	1.00	3.20
3.	KUHINJA	ker.pl.	3.40	1.00	3.40
4.	KUH. BLA. I DB	parket	12.69	1.00	12.69
5.	SOBA	parket	8.92	1.00	8.92
6.	LOGGIA	ker.pl.	2.70	0.75	2.03
STAN 24 UKUPNO:					33.85



SJEVEROISTOČNO PROČELJE



JUGOZAPADNO PROČELJE



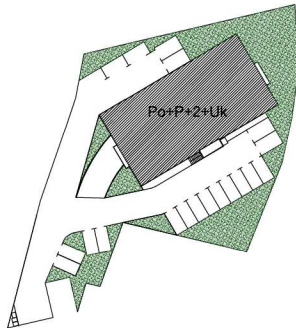
JUGOISTOČNO PROČELJE



SJEVEROZAPADNO PROČELJE

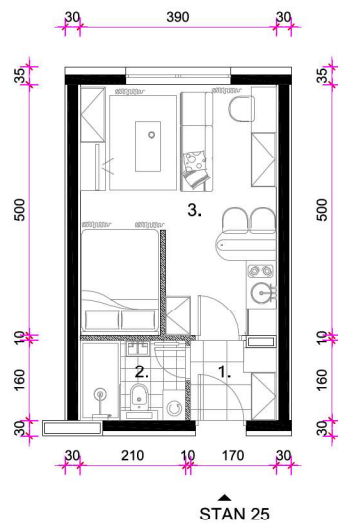


TLOCRT PARCELE

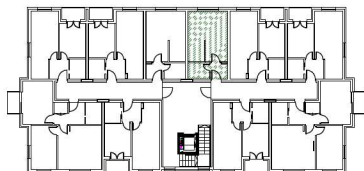


STAN S25 drugi kat

TLOCRT STANA S25



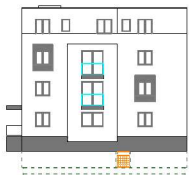
TLOCRT 2. KATA



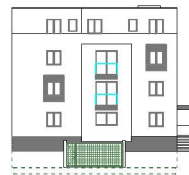
STAN 25					
1.	ULAZ	ker.pl.	2,72	1,00	2,72
2.	KUPAONA	ker.pl.	3,35	1,00	3,35
3.	KUH., BLA i DB	parket	19,29	1,00	19,29
STAN 25 UKUPNO:					25,36



SJEVEROISTOČNO PROČELJE



JUGOZAPADNO PROČELJE



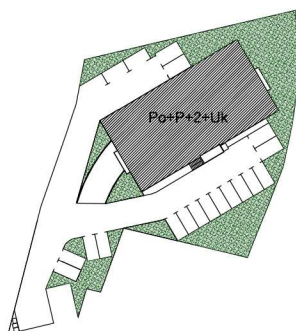
JUGOISTOČNO PROČELJE



SJEVEROZAPADNO PROČELJE

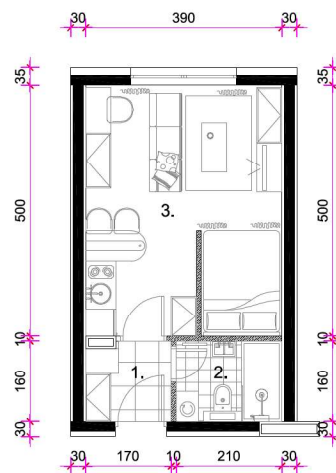


TLOCRT PARCELE



STAN S26 drugi kat

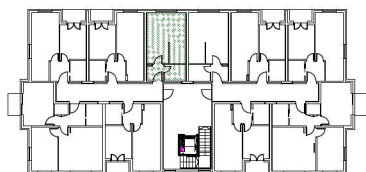
TLOCRT STANA S26



STAN 26



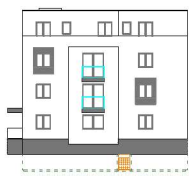
TLOCRT 2. KATA



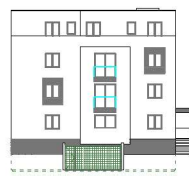
STAN 26					
1.	ULAZ	ker. pl.	2,72	1,00	2,72
2.	KUPAONA	ker. pl.	3,35	1,00	3,35
3.	KUH., BLA i DB	parket	19,29	1,00	19,29
STAN 26 UKUPNO:					25,36



SJEVEROISTOČNO PROČELJE



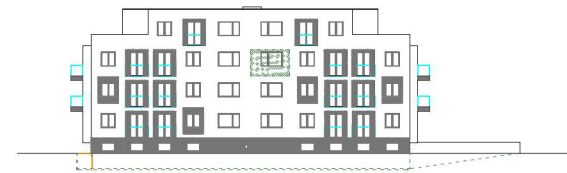
JUGOZAPADNO PROČELJE



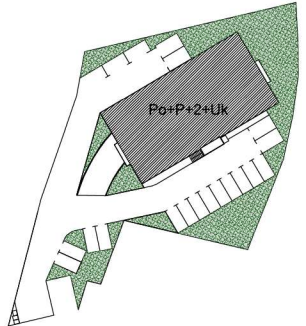
JUGOISTOČNO PROČELJE



SJEVEROZAPADNO PROČELJE

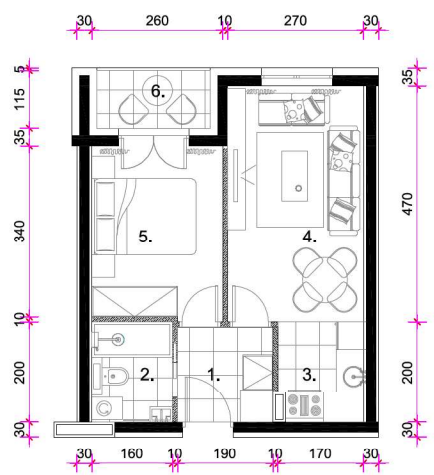


TLOCRT PARCELE



STAN S27 drugi kat

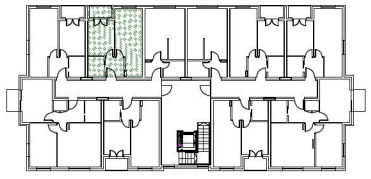
TLOCRT STANA S27



STAN 27



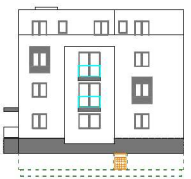
TLOCRT 2. KATA



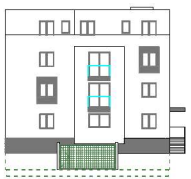
STAN 27					
1.	ULAZ	ker. pl.	3,61	1,00	3,61
2.	KUPAONA	ker. pl.	3,20	1,00	3,20
3.	KUHINJA	ker. pl.	3,40	1,00	3,40
4.	KUH., BLA. I DB	parket	12,69	1,00	12,69
5.	SOBA	parket	8,93	1,00	8,93
6.	LOGGIA	ker. pl.	2,70	0,75	2,03
STAN 27 UKUPNO:					33,86



SJEVEROISTOČNO PROČELJE



JUGOZAPADNO PROČELJE



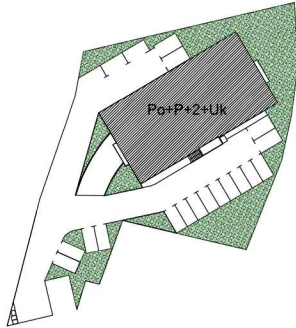
JUGOISTOČNO PROČELJE



SJEVEROZAPADNO PROČELJE

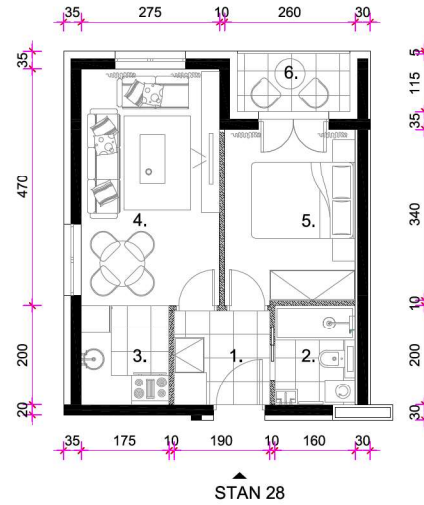


TLOCRT PARCELE

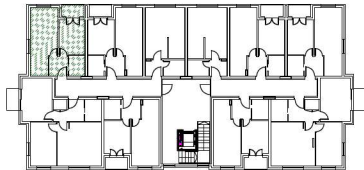


STAN S28 drugi kat

TLOCRT STANA S28



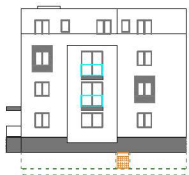
TLOCRT 2. KATA



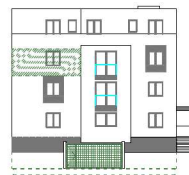
STAN 28					
1.	ULAZ	ker.pl.	3,61	1,00	3,61
2.	KUPAONA	ker.pl.	3,20	1,00	3,20
3.	KUHINJA	ker.pl.	3,50	1,00	3,50
4.	KUH. BLA. I DB	parket	12,92	1,00	12,92
5.	SOBA	parket	8,93	1,00	8,93
6.	LOGGIA	ker.pl.	2,70	0,75	2,03
STAN 28 UKUPNO:					34,19



SJEVEROISTOČNO PROČELJE



JUGOZAPADNO PROČELJE



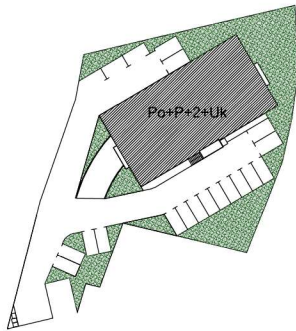
JUGOISTOČNO PROČELJE



SJEVEROZAPADNO PROČELJE

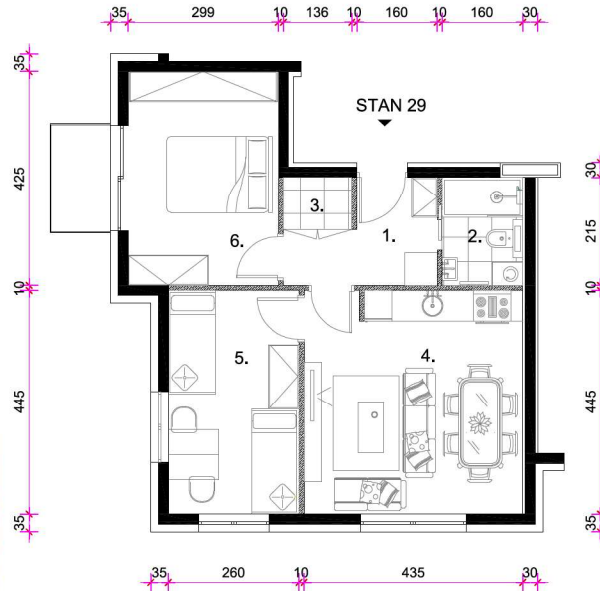


TLOCRT PARCELE

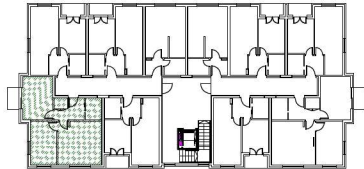


STAN S29 drugi kat

TLOCRT STANA S29



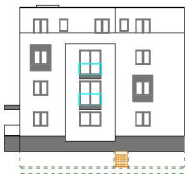
TLOCRT 2. KATA



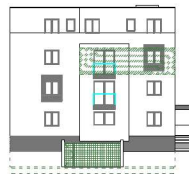
STAN/28					
1.	ULAZ	parket	5.04	1.00	5.04
2.	KUPAONA	ker.pl.	3.44	1.00	3.44
3.	OSTAVA	ker.pl.	1.42	1.00	1.42
4.	KUH., BLA. I DB	parket	19.29	1.00	19.29
5.	SOBA	parket	11.57	1.00	11.57
6.	SOBA	parket	12.72	1.00	12.72
7.	BALKON	ker.pl.	2.61	0.25	0.65
STAN 29 UKUPNO:					54,13



SJEVEROISTOČNO PROČELJE



JUGOZAPADNO PROČELJE



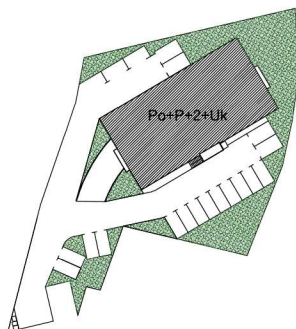
JUGOISTOČNO PROČELJE



SJEVEROZAPADNO PROČELJE

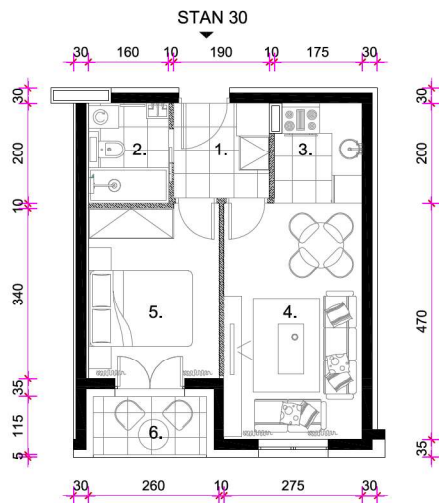


TLOCRT PARCELE

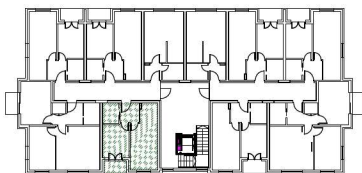


STAN S30 drugi kat

TLOCRT STANA S30



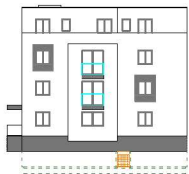
TLOCRT 2. KATA



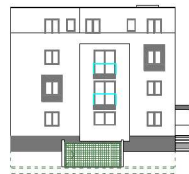
STAN 30					
1.	ULAZ	parket	3,61	1,00	3,61
2.	KUPAONA	ker.pl.	3,20	1,00	3,20
3.	KUHINJA	ker.pl.	3,40	1,00	3,40
4.	KUH., BLA. I DB	parket	12,69	1,00	12,69
5.	SOBA	parket	8,93	1,00	8,93
6.	LOGGIA	ker.pl.	2,70	0,75	2,03
STAN 30 UKUPNO:					33,86



SJEVEROISTOČNO PROČELJE



JUGOZAPADNO PROČELJE



JUGOISTOČNO PROČELJE



SJEVEROZAPADNO PROČELJE

