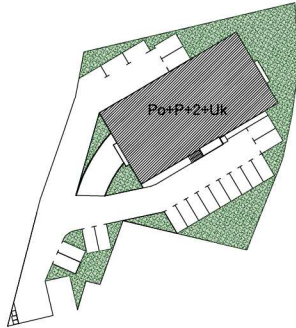
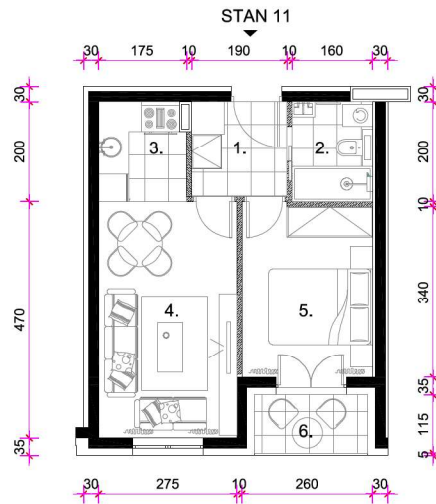


TLOCRT PARCELE

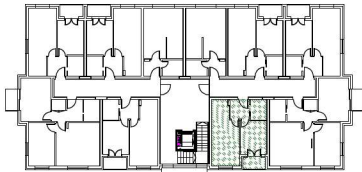


STAN S11 prvi kat

TLOCRT STANA S11



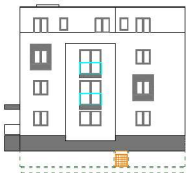
TLOCRT 1. KATA



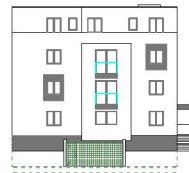
STAN 11					
1.	ULAZ	parket	3,61	1,00	3,61
2.	KUPAONA	ker.pl.	3,20	1,00	3,20
3.	KUHINJA	ker.pl.	3,40	1,00	3,40
4.	KUH. BLA. I DB	parket	12,69	1,00	12,69
5.	SOBA	parket	8,93	1,00	8,93
6.	LOGGIA	ker.pl.	2,70	0,75	2,03
STAN 11 UKUPNO:					33,86



SJEVEROISTOČNO PROČELJE



JUGOZAPADNO PROČELJE



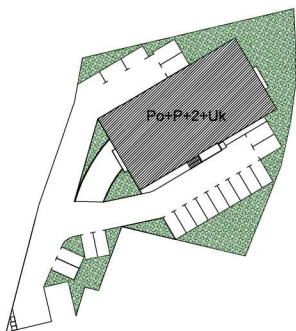
JUGOISTOČNO PROČELJE



SJEVEROZAPADNO PROČELJE

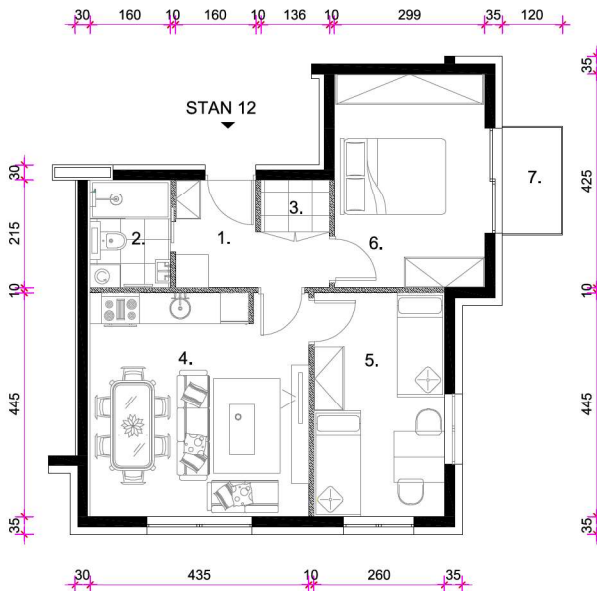


TLOCRT PARCELE

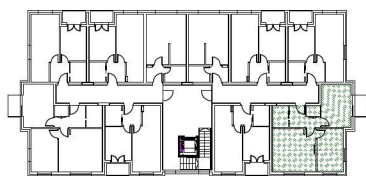


STAN S12 prvi kat

TLOCRT STANA S12



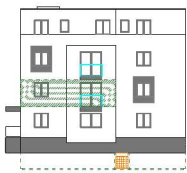
TLOCRT 1. KATA



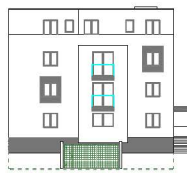
STAN 12					
1.	ULAZ	parket	5,04	1,00	5,04
2.	KUPAONA	ker.pl.	3,44	1,00	3,44
3.	OSTAVA	ker.pl.	1,42	1,00	1,42
4.	KUH., BLA. I DB	parket	19,29	1,00	19,29
5.	SOBA	parket	11,57	1,00	11,57
6.	SOBA	parket	12,72	1,00	12,72
7.	BALKON	ker.pl.	2,61	0,25	0,65
STAN 12 UKUPNO:					54,13



SJEVEROISTOČNO PROČELJE



JUGOZAPADNO PROČELJE



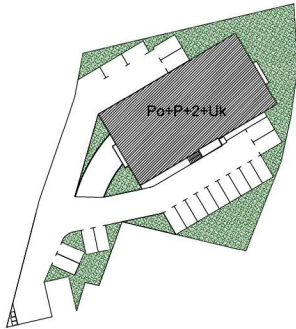
JUGOISTOČNO PROČELJE



SJEVEROZAPADNO PROČELJE

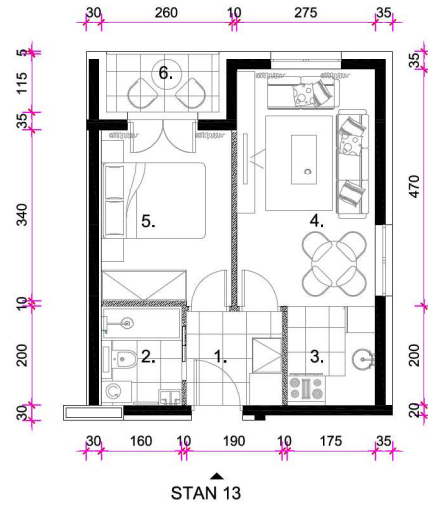


TLOCRT PARCELE

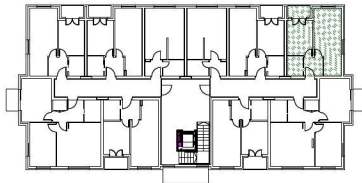


STAN S13 prvi kat

TLOCRT STANA S13



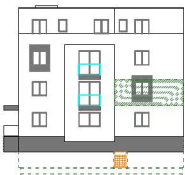
TLOCRT 1. KATA



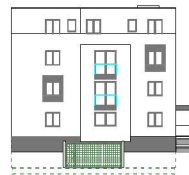
STAN 13					
1.	ULAZ	parket	3,61	1,00	3,61
2.	KUPAONA	ker.pl.	3,20	1,00	3,20
3.	KUHINJA	ker.pl.	3,50	1,00	3,50
4.	KUH. BLA. I DB	parket	12,92	1,00	12,92
5.	SOBA	parket	8,93	1,00	8,93
6.	LOGGIA	ker.pl.	2,70	0,75	2,03
STAN 13 UKUPNO:					34,19



SJEVEROISTOČNO PROČELJE



JUGOZAPADNO PROČELJE



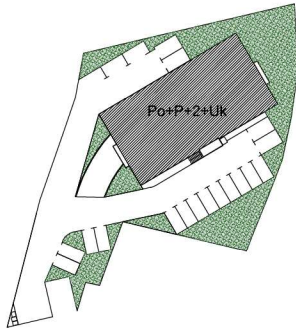
JUGOISTOČNO PROČELJE



SJEVEROZAPADNO PROČELJE

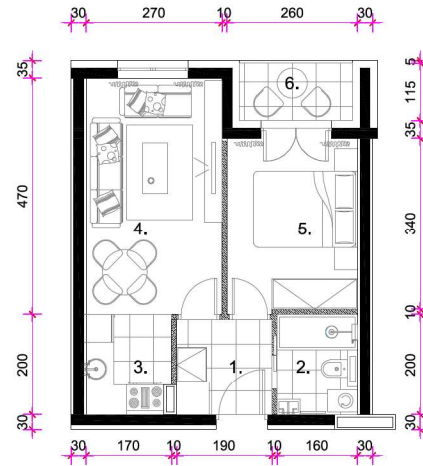


TLOCRT PARCELE



STAN S14 prvi kat

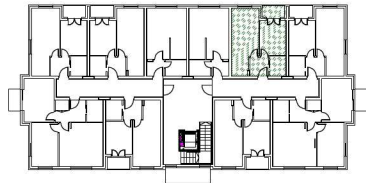
TLOCRT STANA S14



STAN 14



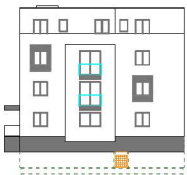
TLOCRT 1. KATA



STAN 14					
1.	ULAZ	ker.pl.	3,61	1,00	3,61
2.	KUPAONA	ker.pl.	3,20	1,00	3,20
3.	KUHNJA	ker.pl.	3,40	1,00	3,40
4.	KUH. BLA. I DB	parket	12,69	1,00	12,69
5.	SOBA	parket	8,92	1,00	8,92
6.	LOGGIA	ker.pl.	2,70	0,75	2,03
STAN 14 UKUPNO:					33,85



SJEVEROISTOČNO PROČELJE



JUGOZAPADNO PROČELJE



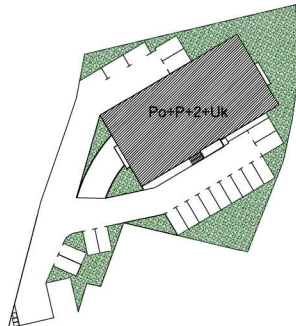
JUGOISTOČNO PROČELJE



SJEVEROZAPADNO PROČELJE

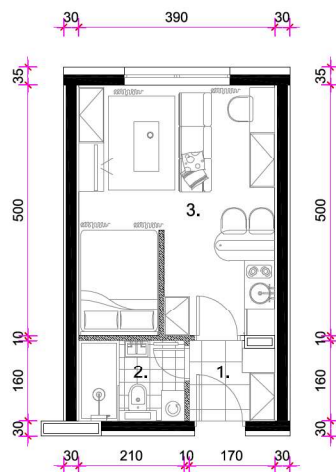


TLOCRT PARCELE



STAN S15 prvi kat

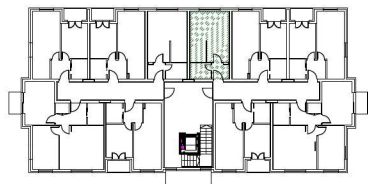
TLOCRT STANA S15



STAN 15



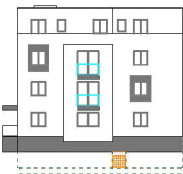
TLOCRT 1. KATA



STAN 15					
1.	ULAZ	ker. pl.	2.72	1,00	2,72
2.	KUPAONA	ker. pl.	3.35	1,00	3,35
3.	KUH., BLA i DB	parket	19.29	1,00	19,29
STAN 15 UKUPNO:					25,36



SJEVEROISTOČNO PROČELJE



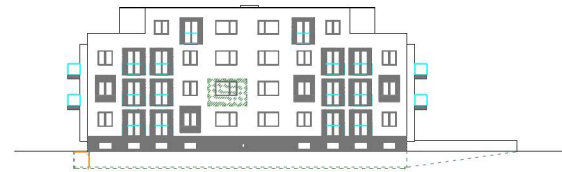
JUGOZAPADNO PROČELJE



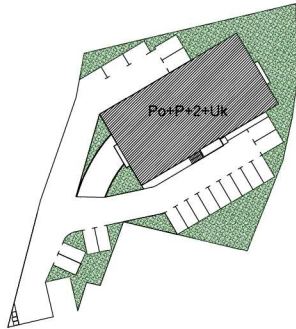
JUGOISTOČNO PROČELJE



SJEVEROZAPADNO PROČELJE

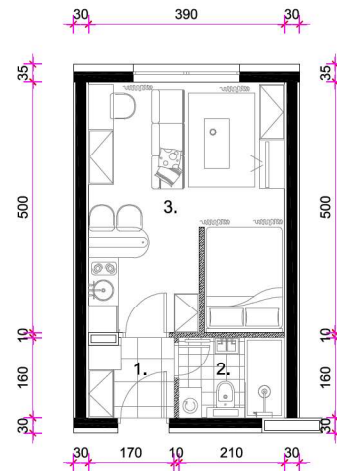


TLOCRT PARCELE



STAN S16 prvi kat

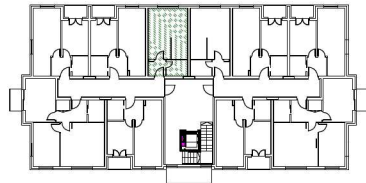
TLOCRT STANA S16



STAN 16



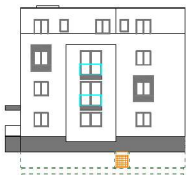
TLOCRT 1. KATA



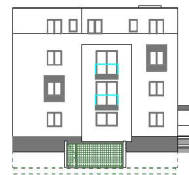
STAN 16					
1.	ULAZ	ker.pl.	2,72	1,00	2,72
2.	KUPAONA	ker.pl.	3,35	1,00	3,35
3.	KUH., BLA i DB	parket	19,29	1,00	19,29
STAN 16 UKUPNO:					25,36



SJEVEROISTOČNO PROČELJE



JUGOZAPADNO PROČELJE



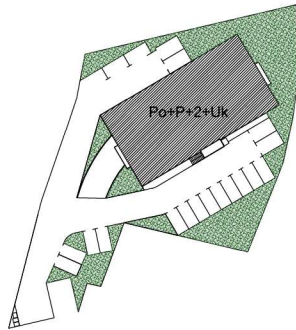
JUGOISTOČNO PROČELJE



SJEVEROZAPADNO PROČELJE

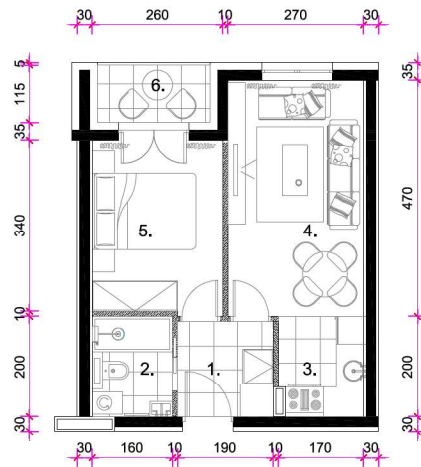


TLOCRT PARCELE



STAN S17 prvi kat

TLOCRT STANA S17



STAN 17



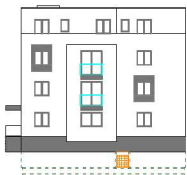
TLOCRT 1. KATA



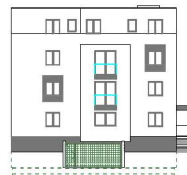
STAN 17					
1.	ULAZ	ker. pl.	3,61	1,00	3,61
2.	KUPAONA	ker. pl.	3,20	1,00	3,20
3.	KUHINJA	ker. pl.	3,40	1,00	3,40
4.	KUH., BLA. I DB	parket	12,69	1,00	12,69
5.	SOBA	parket	8,93	1,00	8,93
6.	LOGGIA	ker. pl.	2,70	0,75	2,03
STAN 17 UKUPNO:					33,86



SJEVEROISTOČNO PROČELJE



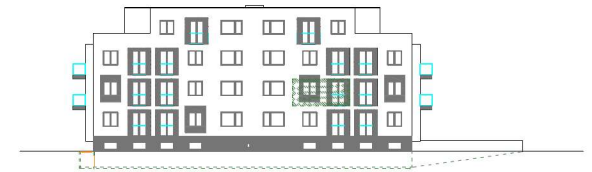
JUGOZAPADNO PROČELJE



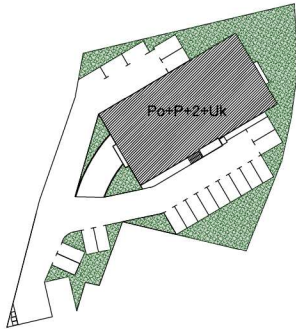
JUGOISTOČNO PROČELJE



SJEVEROZAPADNO PROČELJE

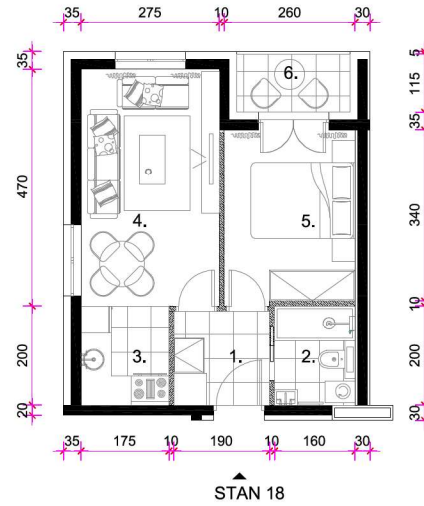


TLOCRT PARCELE

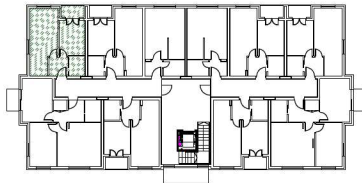


STAN S18 prvi kat

TLOCRT STANA S18



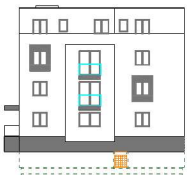
TLOCRT 1. KATA



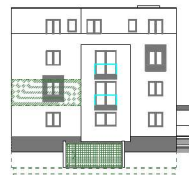
STAN 18					
1	UI A7	ker.pl.	3,61	1,00	3,61
2	KUPAONA	ker.pl.	3,20	1,00	3,20
3	KUHINJA	ker.pl.	3,50	1,00	3,50
4	KUH., BLA. I DB	parket	12,92	1,00	12,92
5	SOBA	parket	8,93	1,00	8,93
6	LOGGIA	ker.pl.	2,70	0,75	2,03
STAN 18 UKUPNO.					34,19



SJEVEROISTOČNO PROČELJE



JUGOZAPADNO PROČELJE



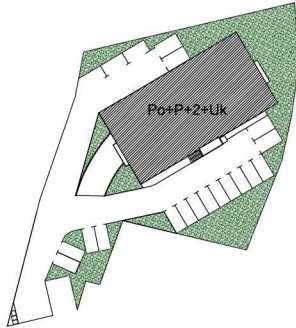
JUGOISTOČNO PROČELJE



SJEVEROZAPADNO PROČELJE

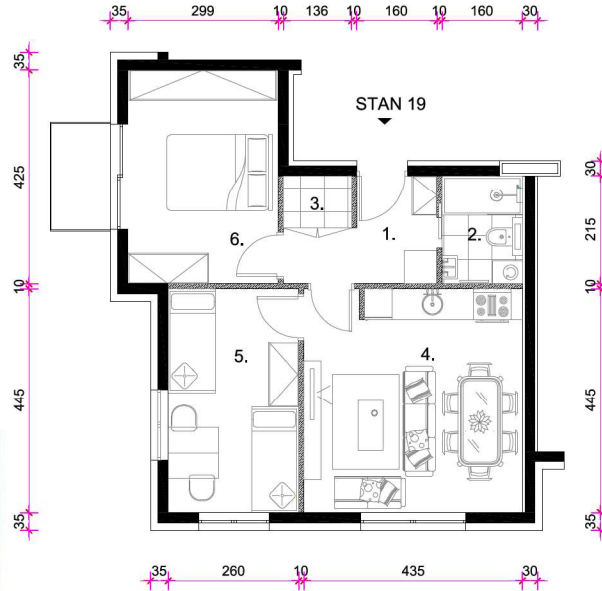


TLOCRT PARCELE

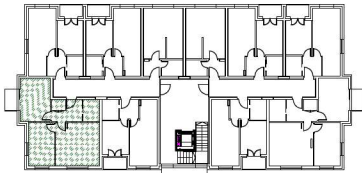


STAN S19 prvi kat

TLOCRT STANA S19



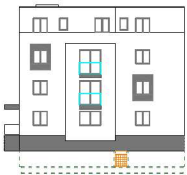
TLOCRT 1. KATA



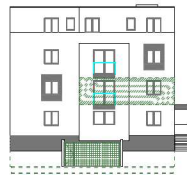
STAN 19					
1.	ULAZ	parket	5.04	1,00	5.04
2.	KUPAONA	ker.pl.	3.44	1,00	3.44
3.	OSTAVA	ker.pl.	1.42	1,00	1.42
4.	KUH. BLA. I DB	parket	19.29	1,00	19.29
5.	SOBA	parket	11.57	1,00	11.57
6.	SOBA	parket	12.72	1,00	12.72
7.	BAKLON	ker.pl.	2.61	0,25	0.65
STAN 19 UKUPNO:					54,13



SJEVEROISTOČNO PROČELJE



JUGOZAPADNO PROČELJE



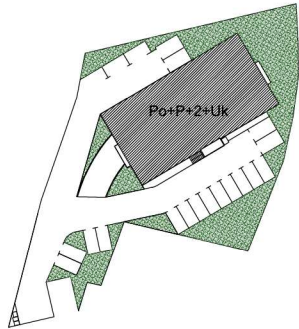
JUGOISTOČNO PROČELJE



SJEVEROZAPADNO PROČELJE

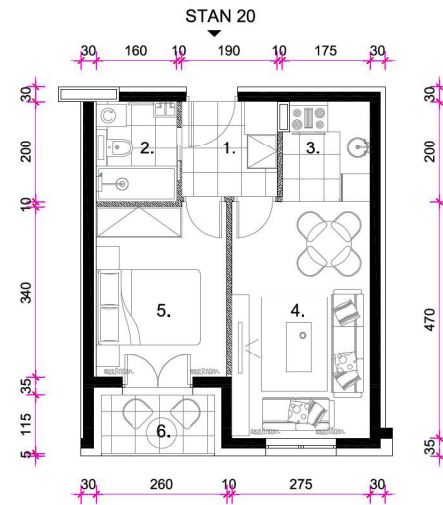


TLOCRT PARCELE

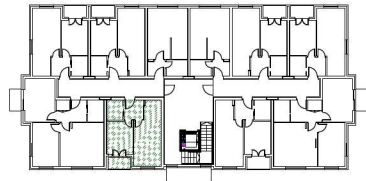


STAN S20 prvi kat

TLOCRT STANA S20



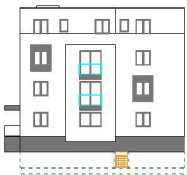
TLOCRT 1. KATA



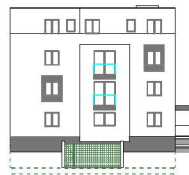
STAN 20					
1.	ULAZ	parket	3,61	1,00	3,61
2.	KUPAONA	ker.pl.	3,20	1,00	3,20
3.	KUHINJA	ker.pl.	3,40	1,00	3,40
4.	KUH. BLA. I DB	parket	12,69	1,00	12,69
5.	SOBA	parket	8,93	1,00	8,93
6.	LOGGIA	ker.pl.	2,70	0,75	2,03
STAN 20 UKUPNO:					33,86



SJEVEROISTOČNO PROČELJE



JUGOZAPADNO PROČELJE



JUGOISTOČNO PROČELJE



SJEVEROZAPADNO PROČELJE

