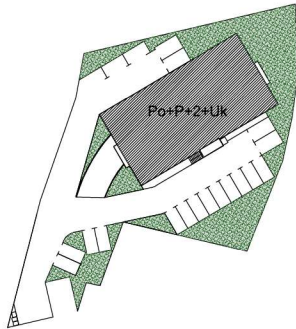
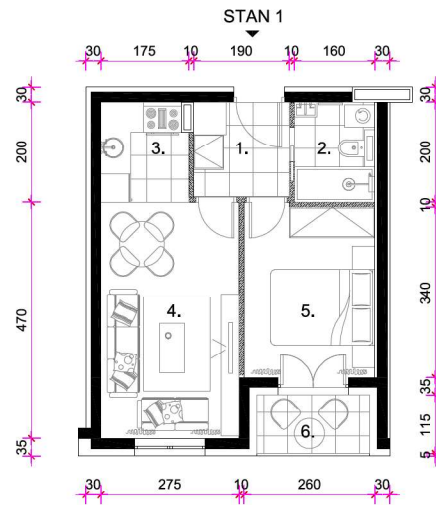


TLOCRT PARCELE

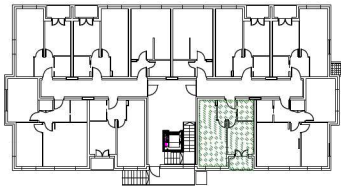


STAN S1 prizemlje

TLOCRT STANA S1



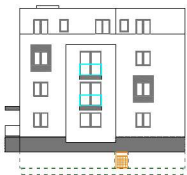
TLOCRT PRIZEMLJA



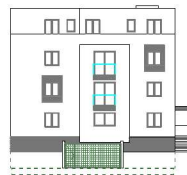
STAN 1					
1.	ULAZ	parket	3,61	1,00	3,61
2.	KUPAONA	ker.pl.	3,20	1,00	3,20
3.	KUHINJA	ker.pl.	3,40	1,00	3,40
4.	KUH., BLA. I DB	parket	12,69	1,00	12,69
5.	SOBA	parket	8,93	1,00	8,93
6.	LOGGIA	ker.pl.	2,70	0,75	2,03
STAN 1 UKUPNO:					33,86



SJEVEROISTOČNO PROČELJE



JUGOZAPADNO PROČELJE



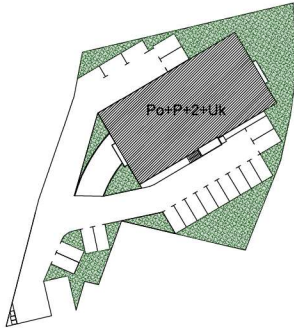
JUGOISTOČNO PROČELJE



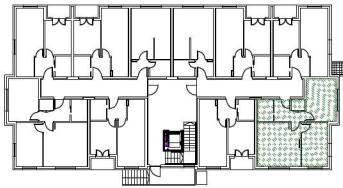
SJEVEROZAPADNO PROČELJE



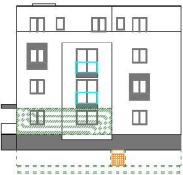
TLOCRT PARCELE



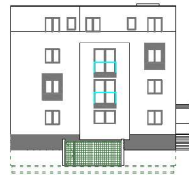
TLOCRT PRIZEMLJA



SJEVEROISTOČNO PROČELJE

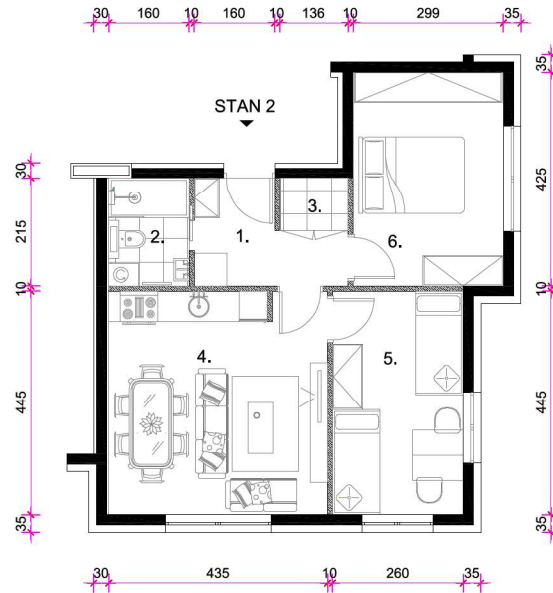


JUGOZAPADNO PROČELJE



STAN S2 prizemlje

TLOCRT STANA S2



STAN 2					
1.	ULAZ	parket	5,04	1,00	5,04
2.	KUPAONA	ker. pl.	3,44	1,00	3,44
3.	OSTAVA	ker. pl.	1,42	1,00	1,42
4.	KUH., BLA. I DB	parket	19,29	1,00	19,29
5.	SOBA	parket	11,57	1,00	11,57
6.	SOBA	parket	12,72	1,00	12,72
STAN 2 UKUPNO:					53,48



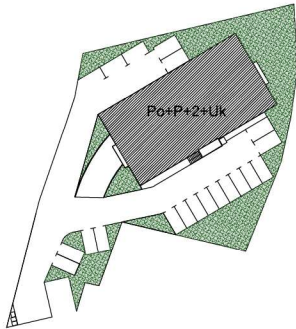
JUGOISTOČNO PROČELJE



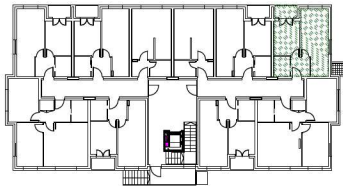
SJEVEROZAPADNO PROČELJE



TLOCRT PARCELE



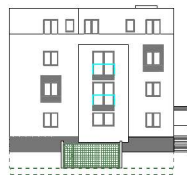
TLOCRT PRIZEMLJA



SJEVEROISTOČNO PROČELJE

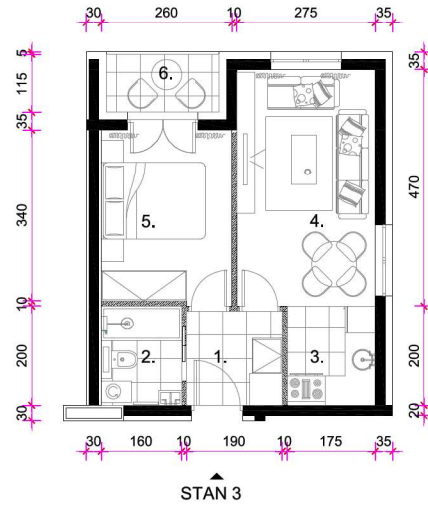


JUGOZAPADNO PROČELJE



STAN S3 prizemlje

TLOCRT STANA S3



STAN 3					
1.	ULAZ	parket	3,61	1,00	3,61
2.	KUPAONA	ker.pl.	3,20	1,00	3,20
3.	KUHINJA	ker.pl.	3,50	1,00	3,50
4.	KUH., BLA. I DB	parket	12,92	1,00	12,92
5.	SOBA	parket	8,93	1,00	8,93
6.	LOGGIA	ker.pl.	2,70	0,75	2,03
STAN 3 UKUPNO:					34,19



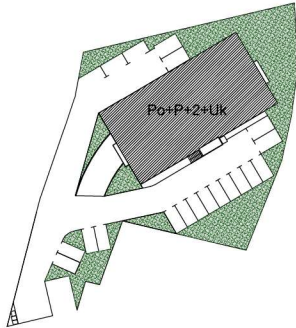
JUGOISTOČNO PROČELJE



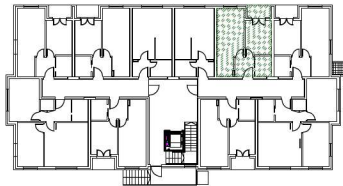
SJEVEROZAPADNO PROČELJE



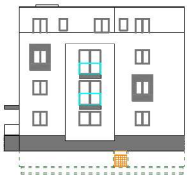
TLOCRT PARCELE



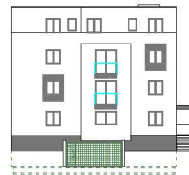
TLOCRT PRIZEMLJA



SJEVEROISTOČNO PROČELJE

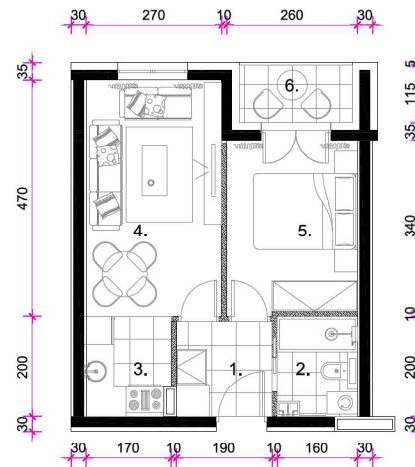


JUGOZAPADNO PROČELJE



STAN S4 prizemlje

TLOCRT STANA S4



STAN 4



STAN 4					
1.	ULAZ	ker.pl.	3,61	1,00	3,61
2.	KUPAONA	ker.pl.	3,20	1,00	3,20
3.	KUHINJA	ker.pl.	3,40	1,00	3,40
4.	KUH. BLA. I DB	parket	12,69	1,00	12,69
5.	SOBA	parket	8,93	1,00	8,93
6.	LOGGIA	ker.pl.	2,70	0,75	2,03
STAN 4 UKUPNO:					33,86



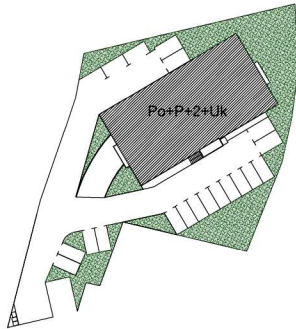
JUGOISTOČNO PROČELJE



SJEVEROZAPADNO PROČELJE

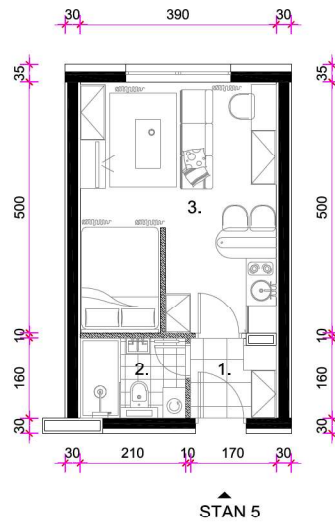


TLOCRT PARCELE

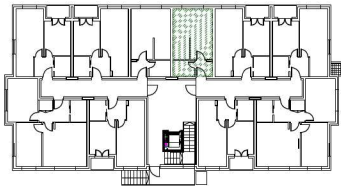


STAN S5 prizemlje

TLOCRT STANA S5



TLOCRT PRIZEMLJA



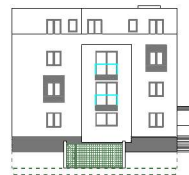
STAN 5					
1.	ULAZ	ker.pl.	2,72	1,00	2,72
2.	KUPAONA	ker.pl.	3,35	1,00	3,35
3.	KUH., BLA I DB	parket	19,29	1,00	19,29
STAN 5 UKUPNO:					25,36



SJEVEROISTOČNO PROČELJE



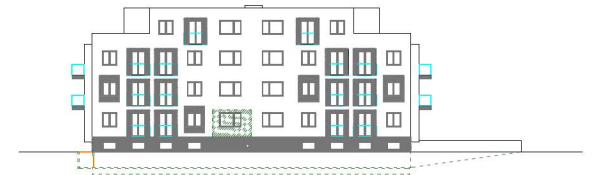
JUGOZAPADNO PROČELJE



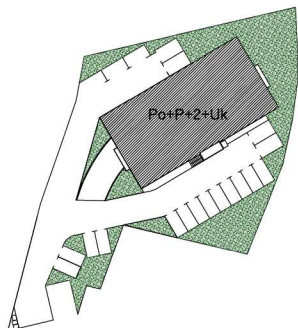
JUGOISTOČNO PROČELJE



SJEVEROZAPADNO PROČELJE

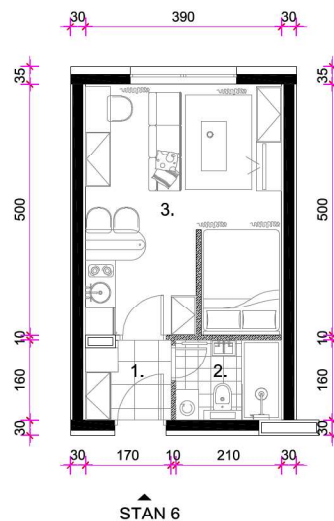


TLOCRT PARCELE

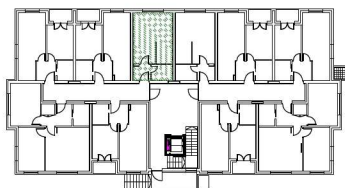


STAN S6 prizemlje

TLOCRT STANA S6



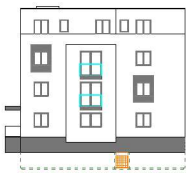
TLOCRT PRIZEMLJA



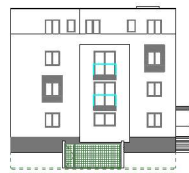
STAN 6					
1.	ULAZ	ker.pl.	2,72	1,00	2,72
2.	KUPAONA	ker.pl.	3,35	1,00	3,35
3.	KUH., BLA i DB	parket	19,29	1,00	19,29
STAN 6 UKUPNO:					25,36



SJEVEROISTOČNO PROČELJE



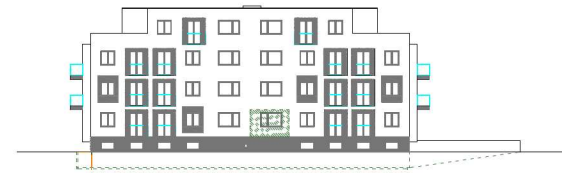
JUGOZAPADNO PROČELJE



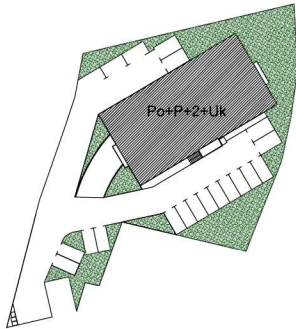
JUGOISTOČNO PROČELJE



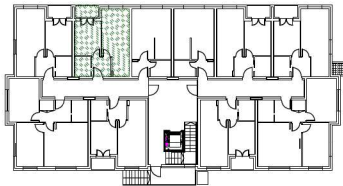
SJEVEROZAPADNO PROČELJE



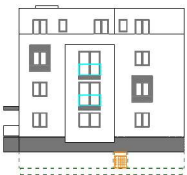
TLOCRT PARCELE



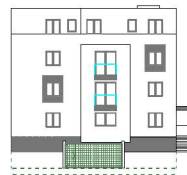
TLOCRT PRIZEMLJA



SJEVEROISTOČNO PROČELJE



JUGOZAPADNO PROČELJE



JUGOISTOČNO PROČELJE

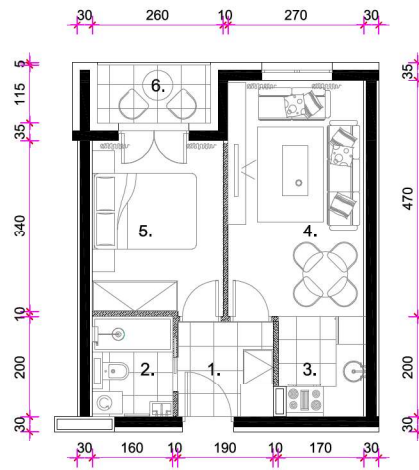


SJEVEROZAPADNO PROČELJE



STAN S7 prizemlje

TLOCRT STANA S7



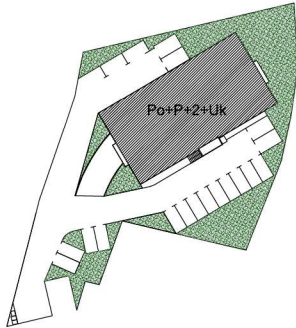
STAN 7



STAN 7					
1.	ULAZ	ker.pl.	3,61	1,00	3,61
2.	KUPAONA	ker.pl.	3,20	1,00	3,20
3.	KUHINJA	ker.pl.	3,40	1,00	3,40
4.	KUH. BLA. I DB	parket	12,69	1,00	12,69
5.	SOBA	parket	8,93	1,00	8,93
6.	LOGGIA	ker.pl.	2,70	0,75	2,03
STAN 7 UKUPNO:					33,86

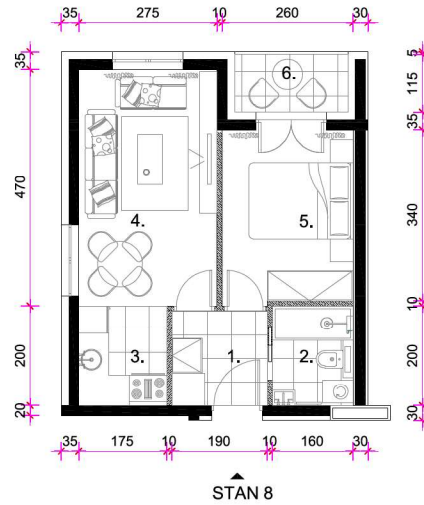


TLOCRT PARCELE

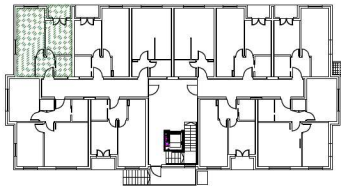


STAN S8 prizemlje

TLOCRT STANA S8



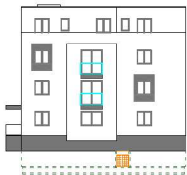
TLOCRT PRIZEMLJA



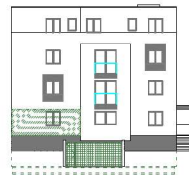
STAN 8					
1.	ULAZ	ker. pl.	3,61	1,00	3,61
2.	KUPAONA	ker. pl.	3,20	1,00	3,20
3.	KUHINJA	ker. pl.	3,50	1,00	3,50
4.	KUH., BLA. I DB	parket	12,92	1,00	12,92
5.	SOBA	parket	8,93	1,00	8,93
6.	LOGGIA	ker. pl.	2,70	0,75	2,03
STAN 8 UKUPNO:					34,19



SJEVEROISTOČNO PROČELJE



JUGOZAPADNO PROČELJE



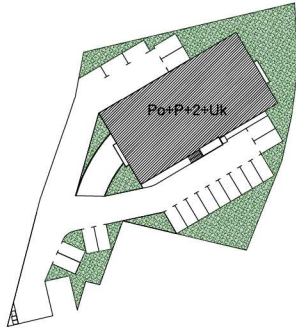
JUGOISTOČNO PROČELJE



SJEVEROZAPADNO PROČELJE

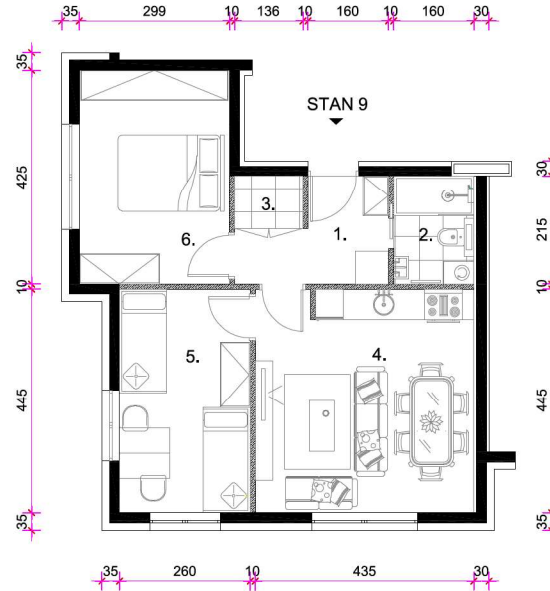


TLOCRT PARCELE

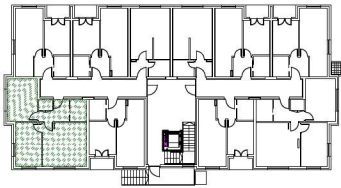


STAN S9 prizemlje

TLOCRT STANA S9



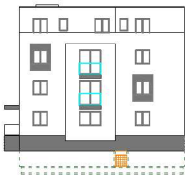
TLOCRT PRIZEMLJA



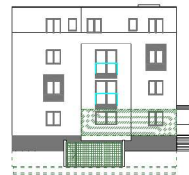
STAN 9					
1.	ULAZ	parket	5,04	1,00	5,04
2.	KUPAONA	ker.pl.	3,44	1,00	3,44
3.	OSTAVA	ker.pl.	1,42	1,00	1,42
4.	KUH., BLA. I DB	parket	19,29	1,00	19,29
5.	SOBA	parket	11,57	1,00	11,57
6.	SOBA	parket	12,72	1,00	12,72
STAN 9 UKUPNO:					53,48



SJEVEROISTOČNO PROČELJE



JUGOZAPADNO PROČELJE



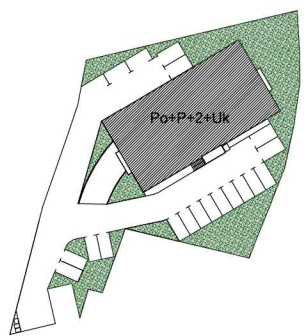
JUGOISTOČNO PROČELJE



SJEVEROZAPADNO PROČELJE

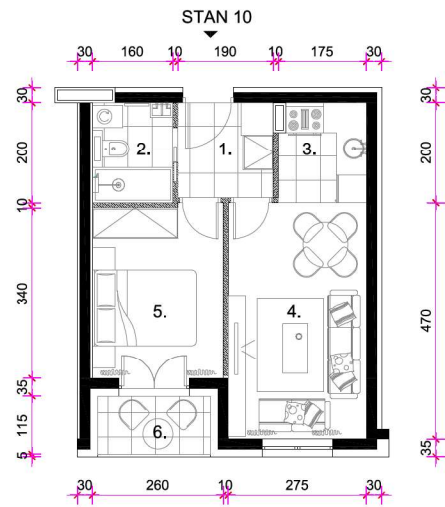


TLOCRT PARCELE

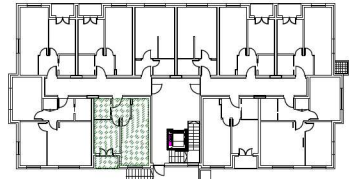


STAN S10 prizemlje

TLOCRT STANA S10



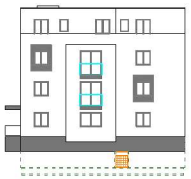
TLOCRT PRIZEMLJA



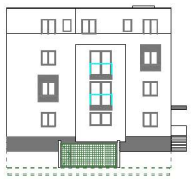
STAN 10					
1.	ULAZ	parket	3,61	1,00	3,61
2.	KUPAONA	ker.pl.	3,20	1,00	3,20
3.	KUHINJA	ker.pl.	3,40	1,00	3,40
4.	KUH. BLA. I DB	parket	12,69	1,00	12,69
5.	SOBA	parket	8,93	1,00	8,93
6.	LOGGIA	ker.pl.	2,70	0,75	2,03
STAN 10 UKUPNO.					33,86



SJEVEROISTOČNO PROČELJE



JUGOZAPADNO PROČELJE



JUGOISTOČNO PROČELJE



SJEVEROZAPADNO PROČELJE

