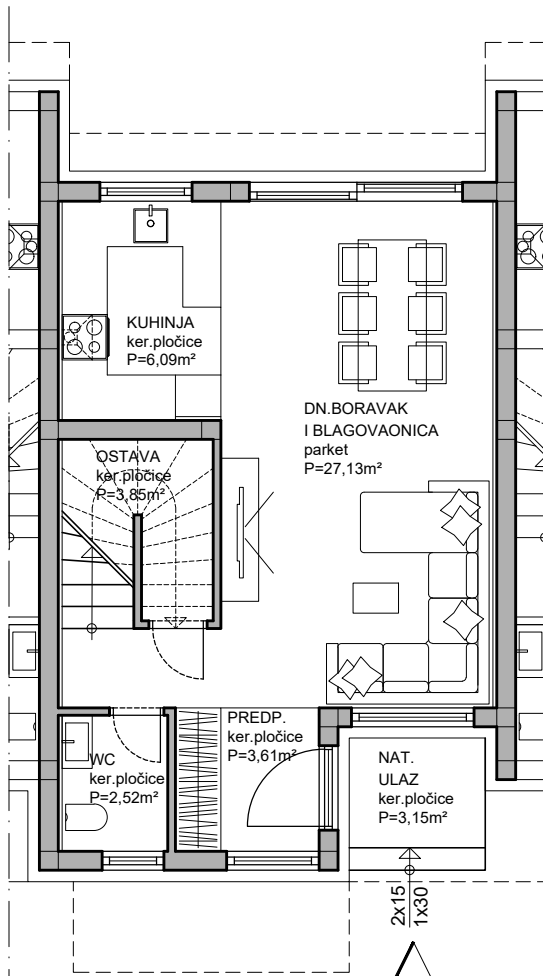
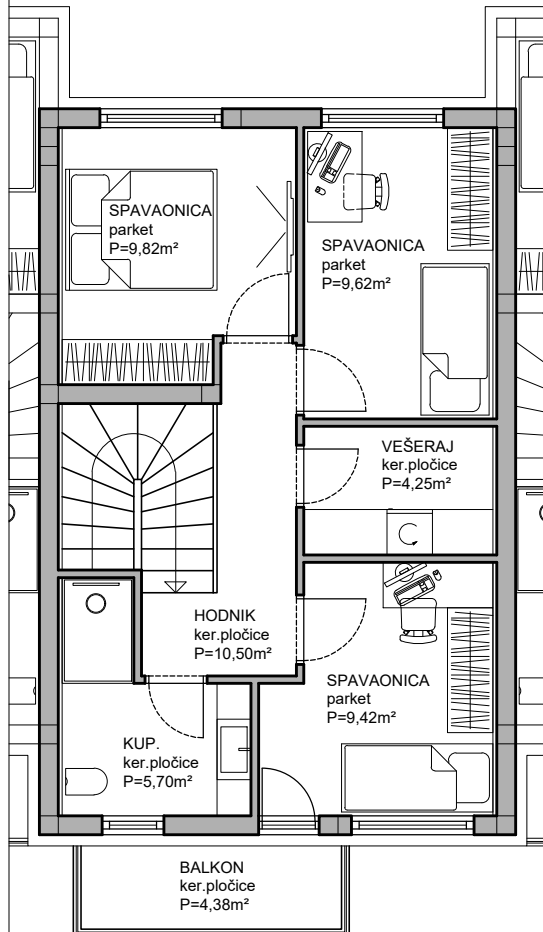


PRIZEMLJE



S2
P ukupno=94,20m²

KAT

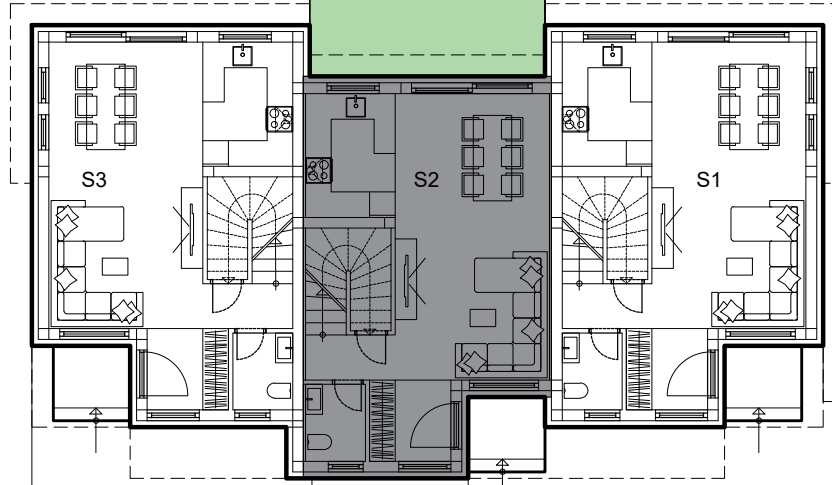


PRIZEMLJE - S2			
NAMJENA	POVRŠINA	KOEFICIJENT	UKUPNO
NAT. ULAZ	3,15 m ²	0,5	1,57 m ²
PREDPROSTOR	3,61 m ²	1,0	3,61 m ²
DN. BORAVAK I BLAGOVAONICA	27,13 m ²	1,0	27,13 m ²
KUHNJA	6,09 m ²	1,0	6,09 m ²
OSTAVA	3,85 m ²	0,75	2,88 m ²
WC	2,52 m ²	1,0	2,52 m ²
			43,80 m ²
KAT - S2			
NAMJENA	POVRŠINA	KOEFICIJENT	UKUPNO
HODNIK	10,50 m ²	1,0	10,50 m ²
VEŠERAJ	4,25 m ²	1,0	4,25 m ²
KUPAONICA	5,70 m ²	1,0	5,70 m ²
SPAVAONICA	9,82 m ²	1,0	9,82 m ²
SPAVAONICA	9,62 m ²	1,0	9,62 m ²
SPAVAONICA	9,42 m ²	1,0	9,42 m ²
BALKON	4,38 m ²	0,25	1,09 m ²
			50,40 m ²

UKUPNO STAN S2 netto 94,20m²
 PARKING (2 kom) = 25,00 m² = 6,25 m²
 VRT 68,17 m² * 0,1 = 6,81 m²

SVEUKUPNO 107,26 m²

vrt - 68,17 m²



S2

