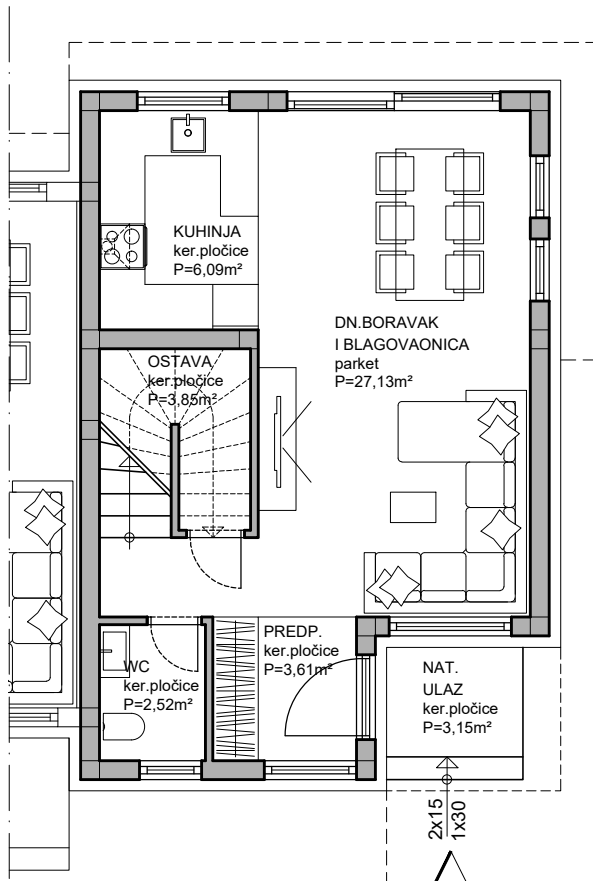


PRIZEMLJE



P ukupno=95,89m²

PRIZEMLJE - S1			
NAMJENA	POVRŠINA	KOEFICIJENT	UKUPNO
NAT. ULAZ	3,15 m ²	0,5	1,57 m ²
PREDPROSTOR	3,61 m ²	1,0	3,61 m ²
DN. BORAVAK I BLAGOVAONICA	27,13 m ²	1,0	27,13 m ²
KUHINJA	6,09 m ²	1,0	6,09 m ²
OSTAVA	3,85 m ²	0,75	2,88 m ²
WC	2,52 m ²	1,0	2,52 m ²
			43,80 m ²
KAT - S1			
NAMJENA	POVRŠINA	KOEFICIJENT	UKUPNO
HODNIK	10,65 m ²	1,0	10,65 m ²
VEŠERAJ	4,25 m ²	1,0	4,25 m ²
KUPAONICA	5,70 m ²	1,0	5,70 m ²
SPAVAONICA	12,45 m ²	1,0	12,45 m ²
SPAVAONICA	9,65 m ²	1,0	9,65 m ²
SPAVAONICA	8,30 m ²	1,0	8,30 m ²
BALKON	4,38 m ²	0,25	1,09 m ²
			52,09 m ²

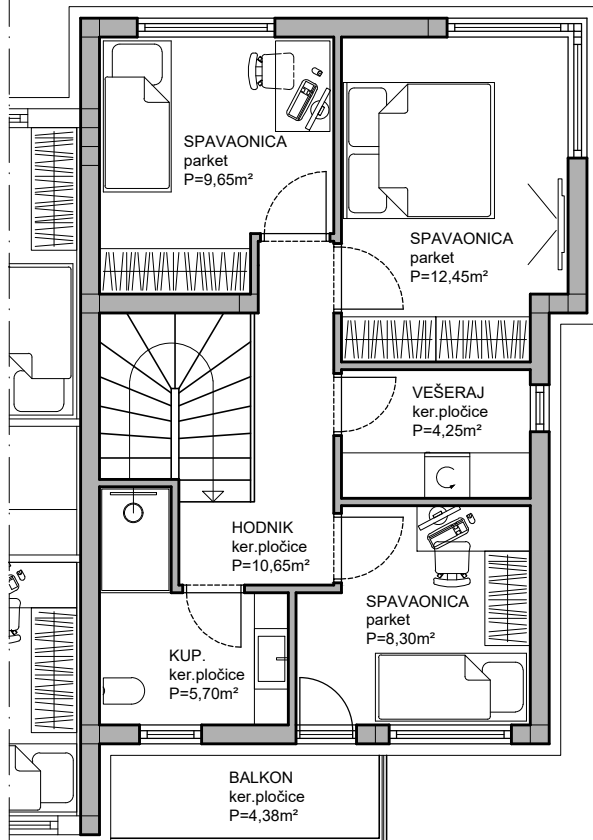
UKUPNO STAN S1 netto 95,89m²

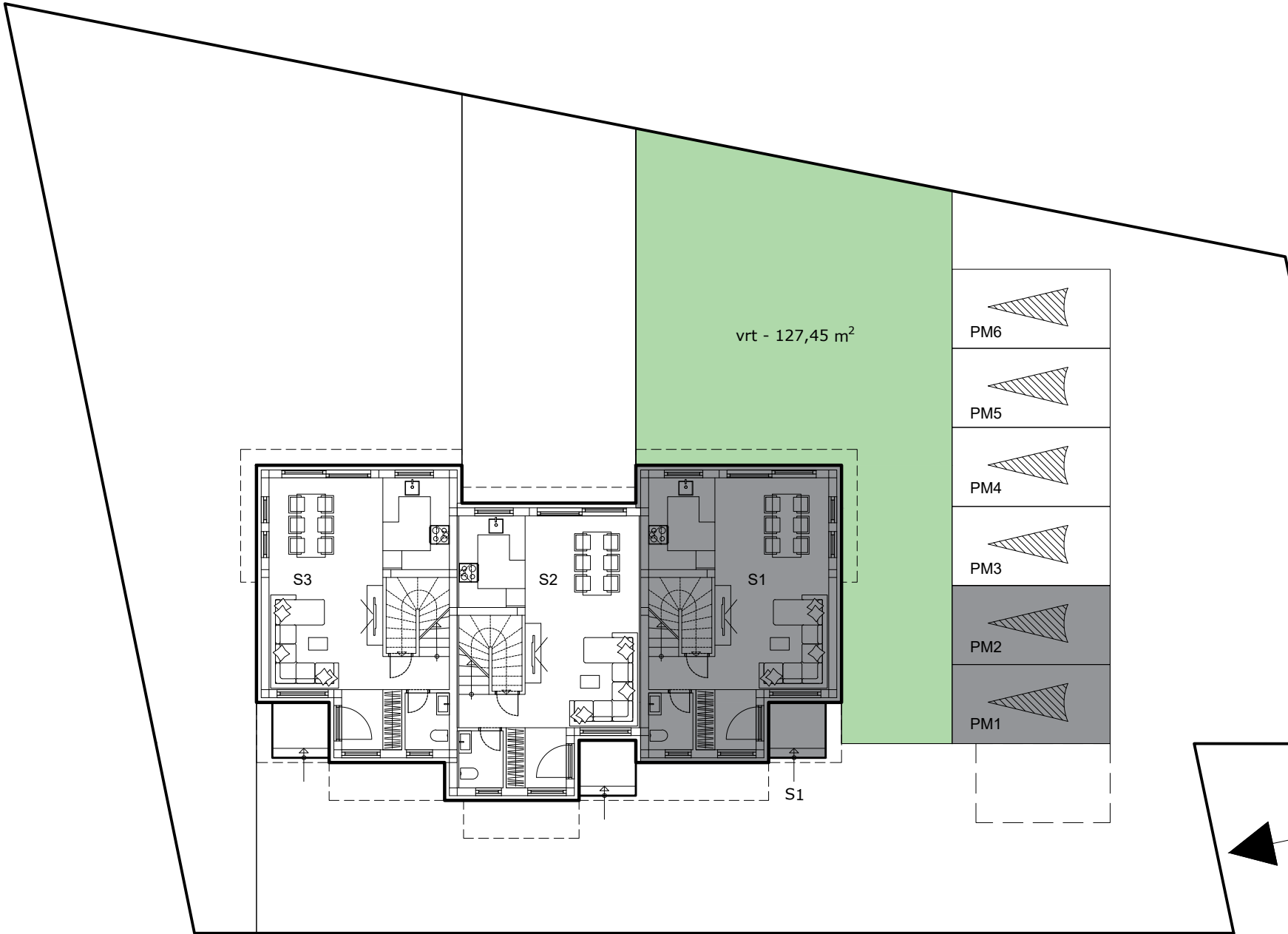
PARKING (2 kom) = 25,00 m² = 6,25 m²

VRT 127,45 m² * 0,1 = 12,74 m²

SVEUKUPNO 114,88 m²

KAT





vrt - 127,45 m²

