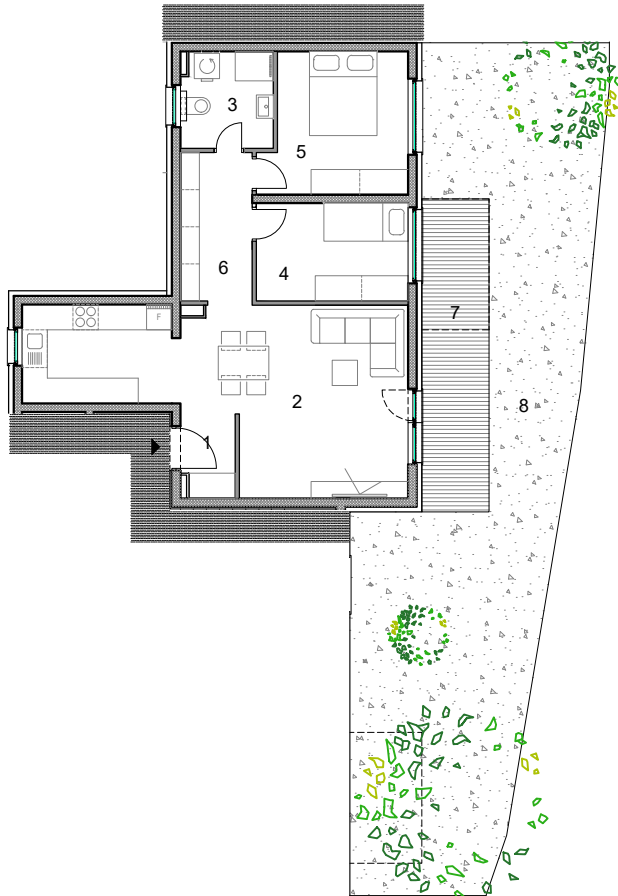




S.0.1.

- trosoban -



PRIZEMLJE

ISKAZ NETTO POVRŠINE STANA:

1. ulazni hodnik	2,48m ²
2. dnevni boravak s kuhinjom	31,40m ²
3. kupaonica	4,94m ²
4. soba	8,35m ²
5. soba 2	11,04m ²
6. predsoblje	6,09m ²
7. natkrivena terasa (x0,50)	2,48m ²
8. vrt (x0,10)	7,77m ²
UKUPNO:	74,55m²



0 | 1 | 2 | 5 | m



S.0.2.

- četverosoban -

PRIZEMLJE

ISKAZ NETTO POVRŠINE STANA:

1.	ulazni hodnik	9,47m ²
2.	dnevni boravak s kuhinjom	18,68m ²
3.	kupaonica	4,72m ²
4.	soba	6,16m ²
5.	soba 2	6,18m ²
6.	soba 3	10,80m ²
7.	natkrivena terasa (x0,50)	2,48m ²
8.	vrt (x0,10)	4,26m ²
UKUPNO:		62,75m²



0 | 1 | 2 | 5 | m



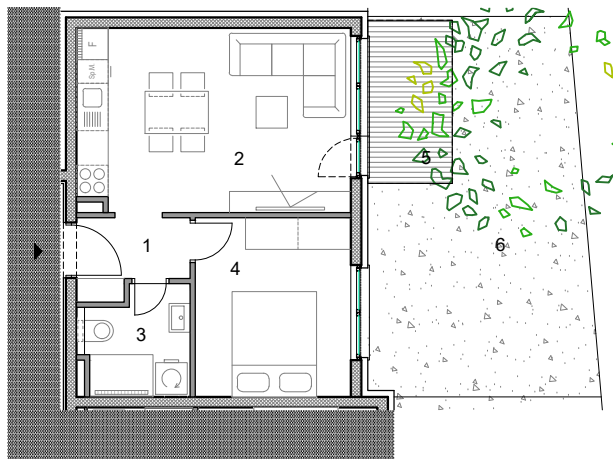
S.0.3.

- dvosoban -

PRIZEMLJE

ISKAZ NETTO POVRŠINE STANA:

1.	ulazni hodnik	2,88m ²
2.	dnevni boravak s kuhinjom	19,02m ²
3.	kupaonica	3,97m ²
4.	soba	10,03m ²
5.	natkrivena terasa (x0,50)	2,48m ²
6.	vrt (x0,10)	2,47m ²
UKUPNO:		40,85m²



0 | 1 | 2 | 5 | m



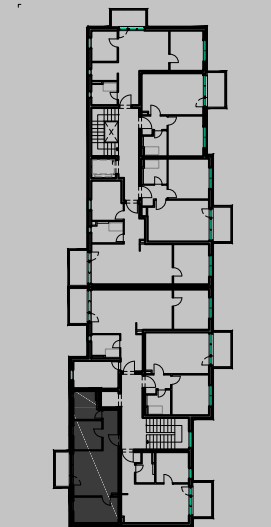
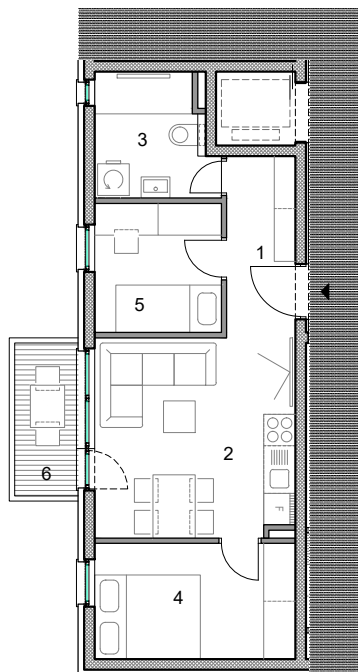
S.1.4.

- trosoban -

1. KAT

ISKAZ NETTO POVRŠINE STANA:

1. ulazni hodnik	4,49m ²
2. dnevni boravak s kuhinjom	15,29m ²
3. kupaonica	5,08m ²
4. soba	8,36m ²
5. soba 2	5,88m ²
6. natkriveni balkon (x0,50)	1,74m ²
UKUPNO:	40,84m²



0 | 1 | 2 | 5 | m



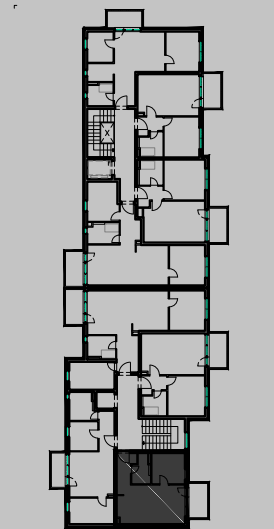
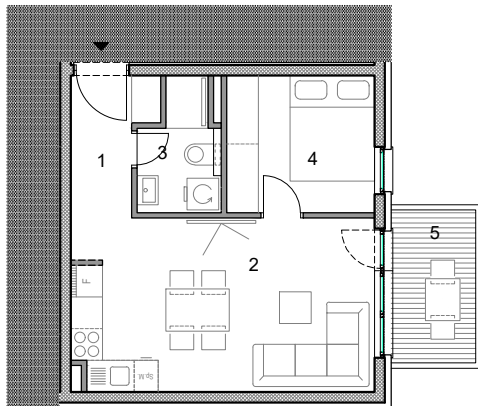
S.1.5.

- dvosoban -

1. KAT

ISKAZ NETTO POVRŠINE STANA:

1. ulazni hodnik	3,69m ²
2. dnevni boravak s kuhinjom	20,15m ²
3. kupaonica	3,70m ²
4. soba	8,05m ²
5. natkriveni balkon (x0,50)	2,35m ²
UKUPNO:	37,94m²



0 | 1 | 2 | 5 | m



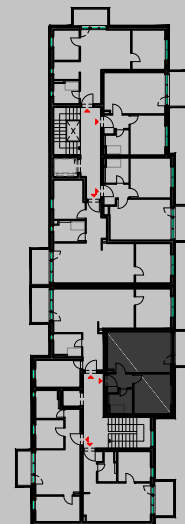
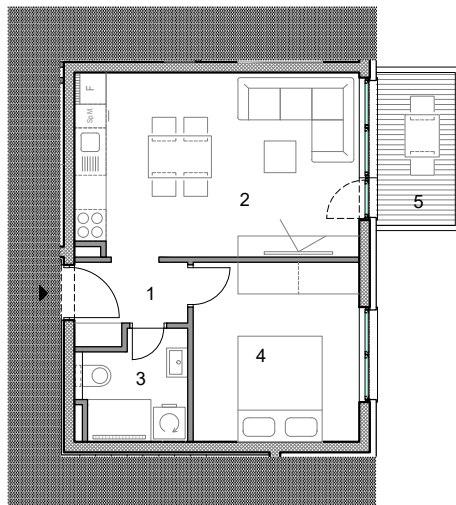
S.1.6.

- dvosoban -

1. KAT

ISKAZ NETTO POVRŠINE STANA:

1. ulazni hodnik	3,10m ²
2. dnevni boravak s kuhinjom	19,25m ²
3. kupaonica	4,32m ²
4. soba	11,37m ²
5. natkriveni balkon (x0,50)	2,29m ²
UKUPNO:	40,33m²



0 | 1 | 2 | 5 | m



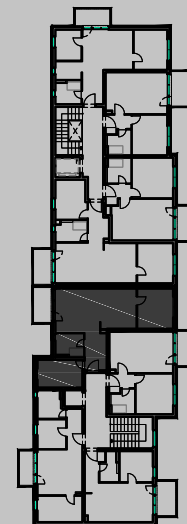
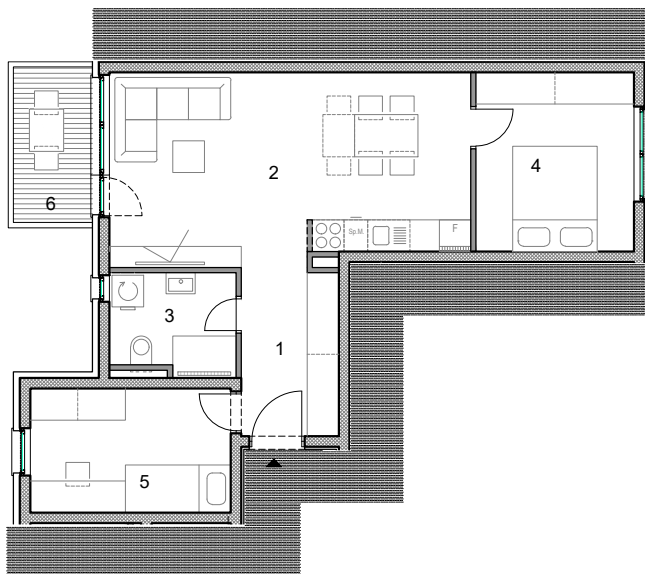
S.1.7.

- trosoban -

1. KAT

ISKAZ NETTO POVRŠINE STANA:

1.	ulazni hodnik	5,86m ²
2.	dnevni boravak s kuhinjom	25,41m ²
3.	kupaonica	4,50m ²
4.	soba	10,20m ²
5.	soba 2	8,93m ²
6.	lođa (x0,75)	3,24m ²
UKUPNO:		58,14m ²



0 | 1 | 2 | 5 | m



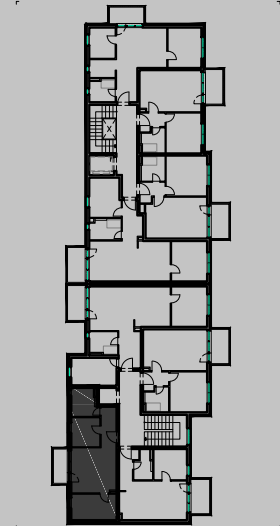
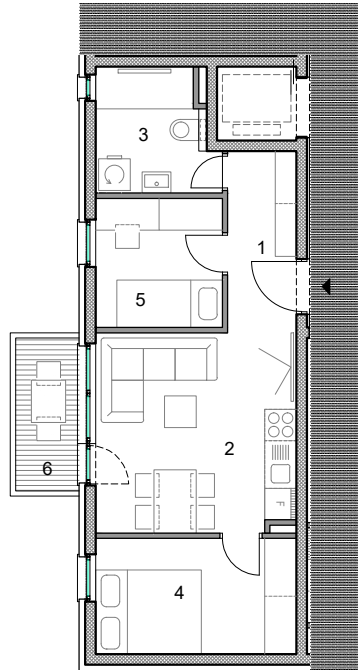
S.2.8.

- trosoban -

1. KAT

ISKAZ NETTO POVRŠINE STANA:

1. ulazni hodnik	4,49m ²
2. dnevni boravak s kuhinjom	15,29m ²
3. kupaonica	5,08m ²
4. soba	8,36m ²
5. soba 2	5,88m ²
6. natkriveni balkon (x0,50)	1,74m ²
UKUPNO:	40,84m²



0 | 1 | 2 | 5 | m



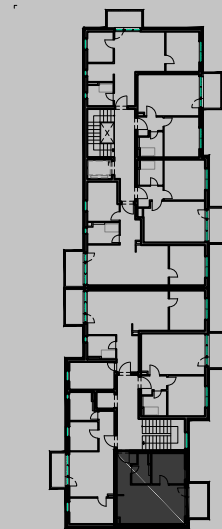
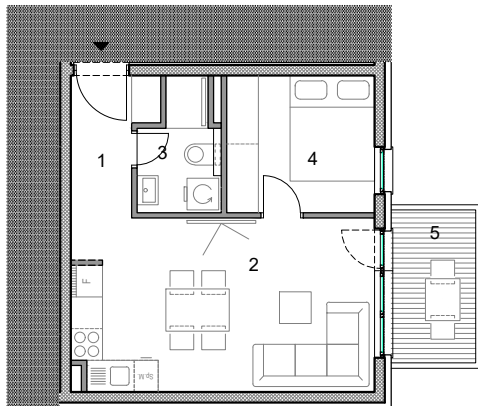
S.2.9.

- dvosoban -

1. KAT

ISKAZ NETTO POVRŠINE STANA:

1. ulazni hodnik	3,69m ²
2. dnevni boravak s kuhinjom	20,15m ²
3. kupaonica	3,70m ²
4. soba	8,05m ²
5. natkriveni balkon (x0,50)	2,35m ²
UKUPNO:	37,94m²



0 | 1 | 2 | 5 | m



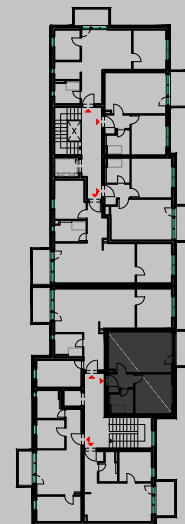
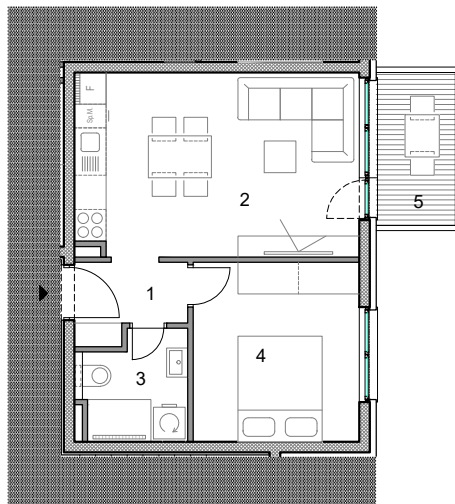
S.2.10.

- dvosoban -

1. KAT

ISKAZ NETTO POVRŠINE STANA:

1. ulazni hodnik	3,10m ²
2. dnevni boravak s kuhinjom	19,25m ²
3. kupaonica	4,32m ²
4. soba	11,37m ²
5. natkriveni balkon (x0,50)	2,29m ²
UKUPNO:	40,33m²



0 | 1 | 2 | 5 | m



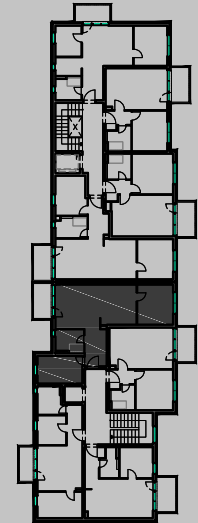
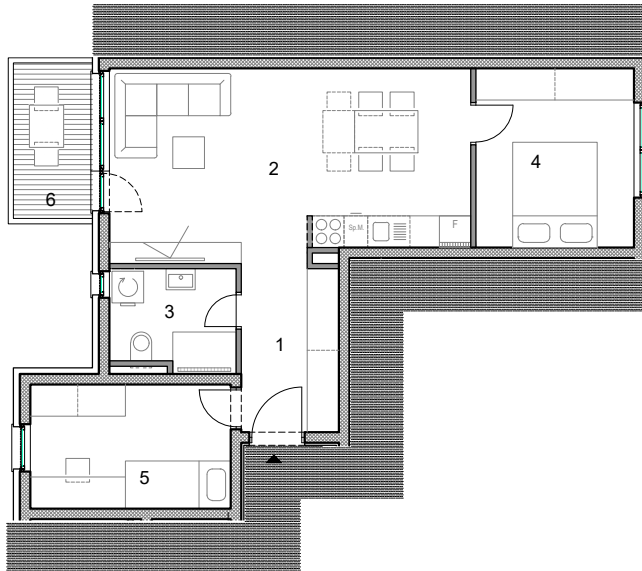
S.2.11.

- trosoban -

1. KAT

ISKAZ NETTO POVRŠINE STANA:

1. ulazni hodnik	5,86m ²
2. dnevni boravak s kuhinjom	25,41m ²
3. kupaonica	4,50m ²
4. soba	10,20m ²
5. soba 2	8,93m ²
6. lođa (x0,75)	3,24m ²
UKUPNO:	58,14m²



0 | 1 | 2 | 5 | m



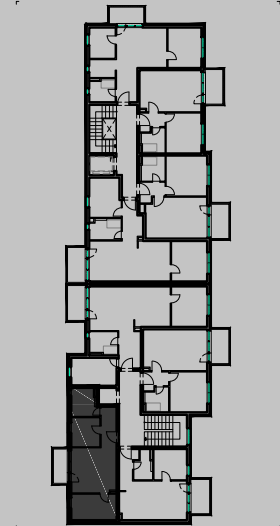
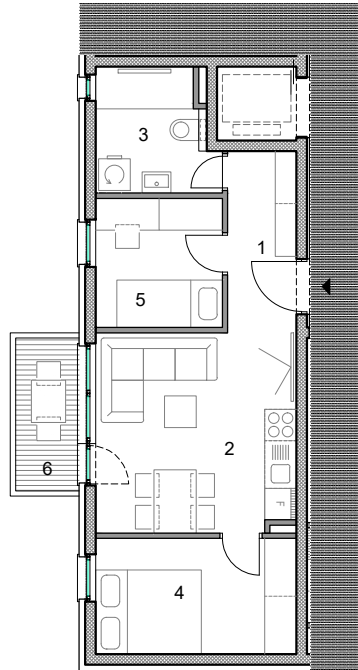
S.3.12.

- trosoban -

1. KAT

ISKAZ NETTO POVRŠINE STANA:

1. ulazni hodnik	4,49m ²
2. dnevni boravak s kuhinjom	15,29m ²
3. kupaonica	5,08m ²
4. soba	8,36m ²
5. soba 2	5,88m ²
6. natkriveni balkon (x0,50)	1,74m ²
UKUPNO:	40,84m²



0 | 1 | 2 | 5 | m



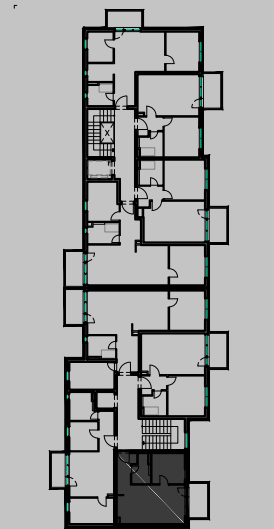
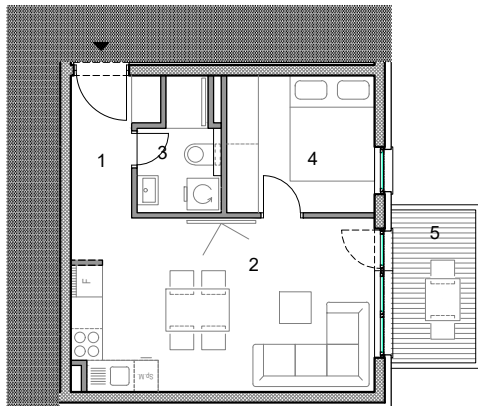
S.3.13.

- dvosoban -

1. KAT

ISKAZ NETTO POVRŠINE STANA:

1. ulazni hodnik	3,69m ²
2. dnevni boravak s kuhinjom	20,15m ²
3. kupaonica	3,70m ²
4. soba	8,05m ²
5. natkriveni balkon (x0,50)	2,35m ²
UKUPNO:	37,94m²



0 | 1 | 2 | 5 | m



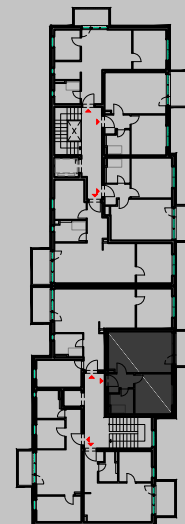
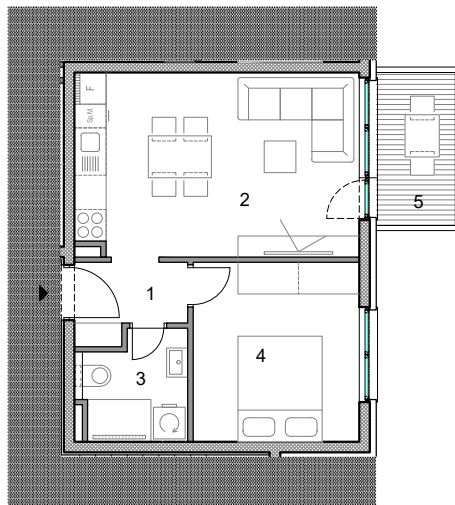
S.3.14.

- dvosoban -

1. KAT

ISKAZ NETTO POVRŠINE STANA:

1. ulazni hodnik	3,10m ²
2. dnevni boravak s kuhinjom	19,25m ²
3. kupaonica	4,32m ²
4. soba	11,37m ²
5. natkriveni balkon (x0,50)	2,29m ²
UKUPNO:	40,33m²



0 | 1 | 2 | 5 | m



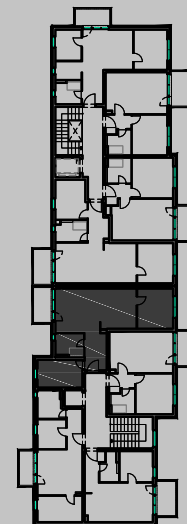
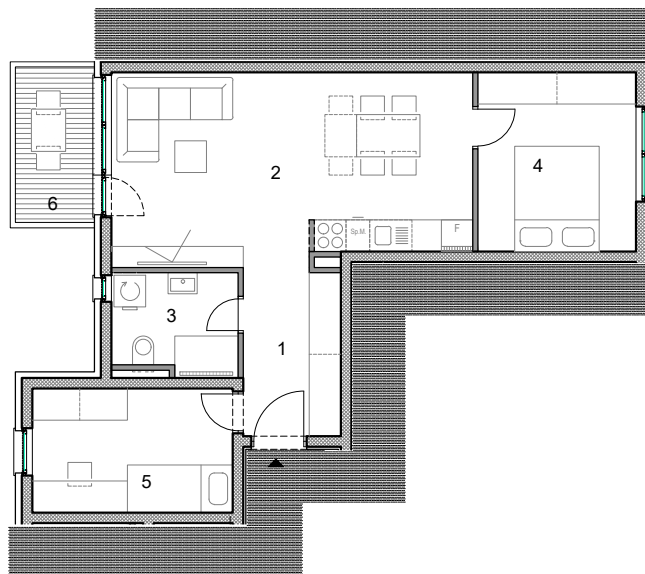
S.3.15.

- trosoban -

1. KAT

ISKAZ NETTO POVRŠINE STANA:

1. ulazni hodnik	5,86m ²
2. dnevni boravak s kuhinjom	25,41m ²
3. kupaonica	4,50m ²
4. soba	10,20m ²
5. soba 2	8,93m ²
6. lođa (x0,75)	3,24m ²
UKUPNO:	58,14m²



0 | 1 | 2 | 5 | m



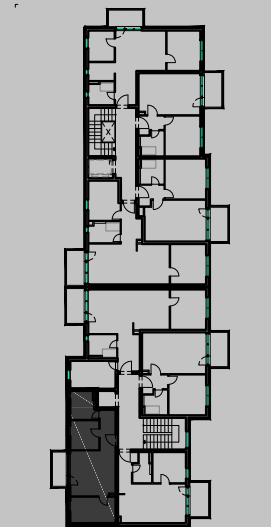
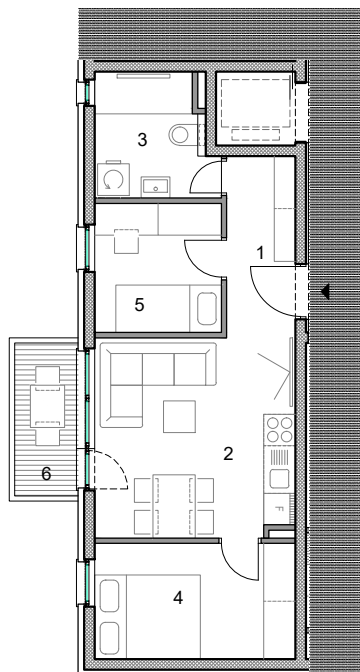
S.4.16.

- trosoban -

1. KAT

ISKAZ NETTO POVRŠINE STANA:

1. ulazni hodnik	4,49m ²
2. dnevni boravak s kuhinjom	15,29m ²
3. kupaonica	5,08m ²
4. soba	8,36m ²
5. soba 2	5,88m ²
6. natkriveni balkon (x0,50)	1,74m ²
UKUPNO:	40,84m²



0 | 1 | 2 | 5 | m



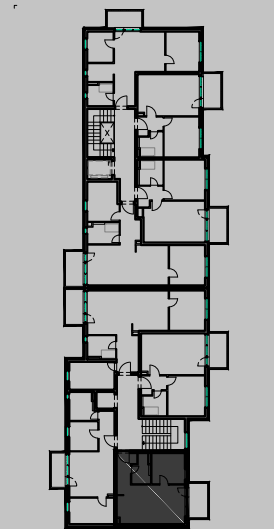
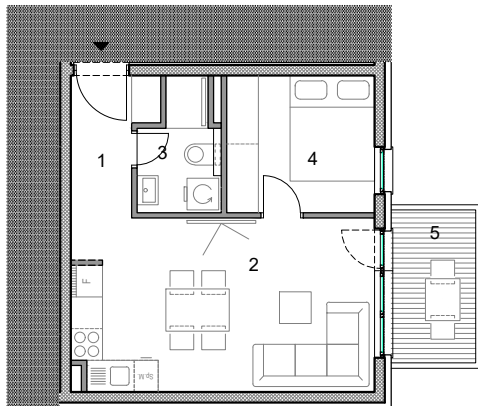
S.4.17.

- dvosoban -

1. KAT

ISKAZ NETTO POVRŠINE STANA:

1. ulazni hodnik	3,69m ²
2. dnevni boravak s kuhinjom	20,15m ²
3. kupaonica	3,70m ²
4. soba	8,05m ²
5. natkriveni balkon (x0,50)	2,35m ²
UKUPNO:	37,94m²



0 | 1 | 2 | 5 | m



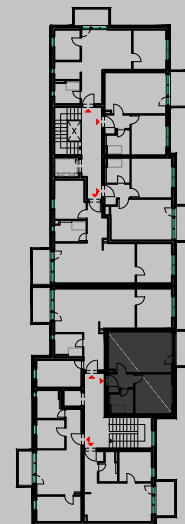
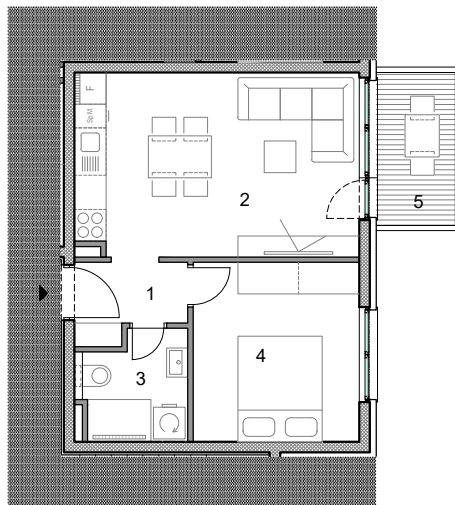
S.4.18.

- dvosoban -

1. KAT

ISKAZ NETTO POVRŠINE STANA:

1. ulazni hodnik	3,10m ²
2. dnevni boravak s kuhinjom	19,25m ²
3. kupaonica	4,32m ²
4. soba	11,37m ²
5. natkriveni balkon (x0,50)	2,29m ²
UKUPNO:	40,33m²



0 | 1 | 2 | 5 | m



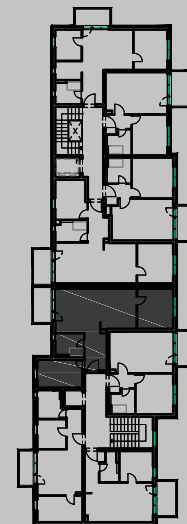
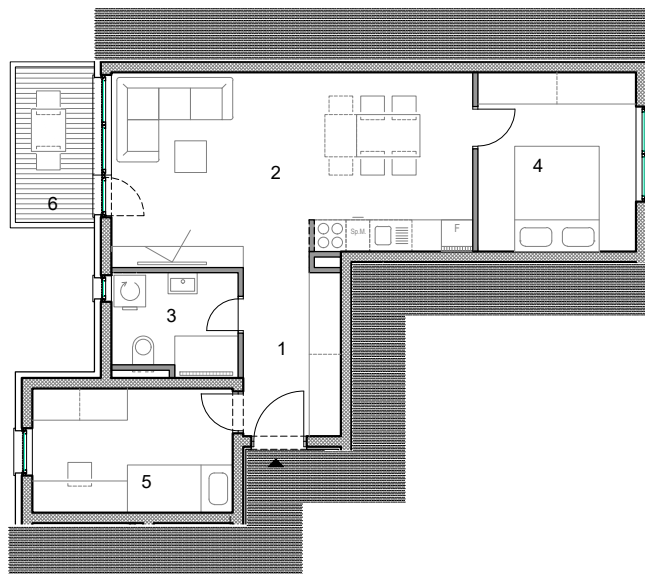
S.4.19.

- trosoban -

1. KAT

ISKAZ NETTO POVRŠINE STANA:

1.	ulazni hodnik	5,86m ²
2.	dnevni boravak s kuhinjom	25,41m ²
3.	kupaonica	4,50m ²
4.	soba	10,20m ²
5.	soba 2	8,93m ²
6.	lođa (x0,75)	3,24m ²
UKUPNO:		58,14m ²



0 | 1 | 2 | 5 | m



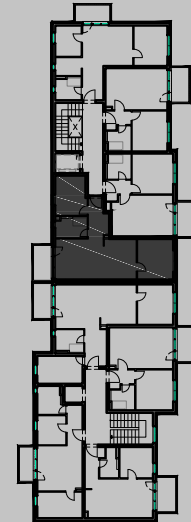
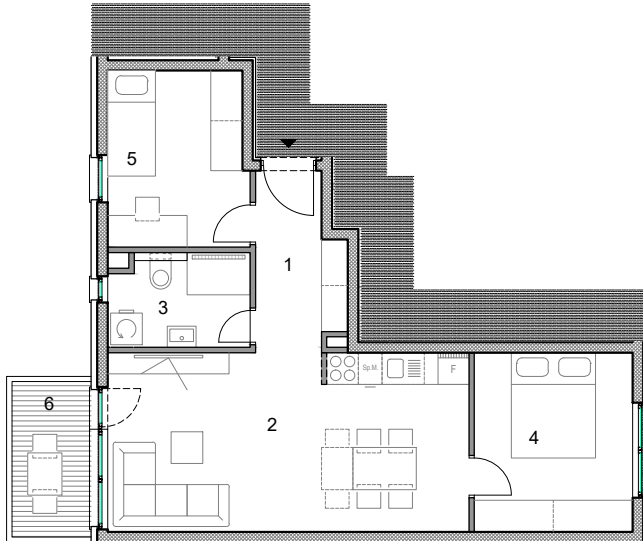
S.1.20.

- trosoban -

1. KAT

ISKAZ NETTO POVRŠINE STANA:

1.	ulazni hodnik	5,19m ²
2.	dnevni boravak s kuhinjom	24,29m ²
3.	kupaonica	4,66m ²
4.	soba	10,20m ²
5.	soba 2	8,76m ²
6.	lođa (x0,75)	3,24m ²
UKUPNO:		56,34m²



0 | 1 | 2 | 5 | m



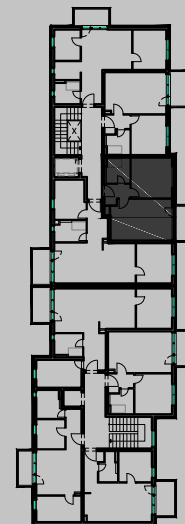
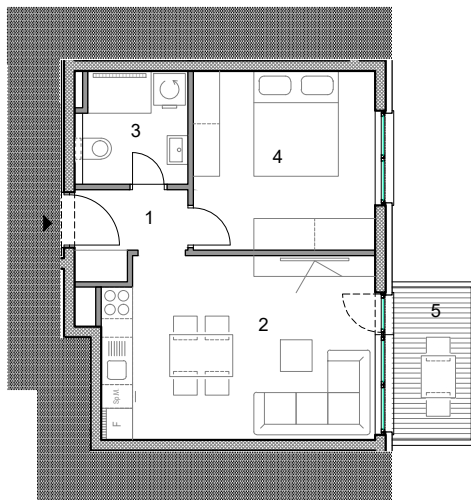
S.1.21.

- dvosoban -

1. KAT

ISKAZ NETTO POVRŠINE STANA:

1. ulazni hodnik	3,07m ²
2. dnevni boravak s kuhinjom	18,84m ²
3. kupaonica	4,42m ²
4. soba	11,73m ²
5. natkriveni balkon (x0,50)	2,18m ²
UKUPNO:	40,24m²



0 | 1 | 2 | 5 | m



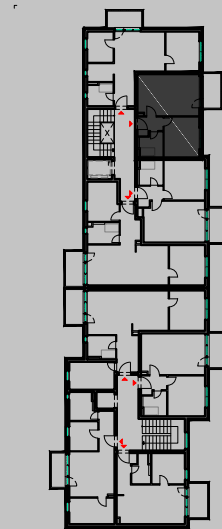
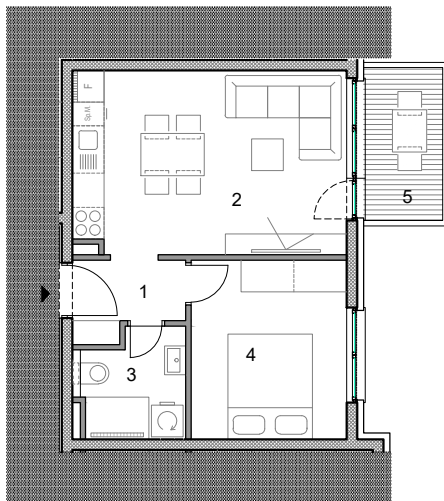
S.1.22.

- dvosoban -

1. KAT

ISKAZ NETTO POVRŠINE STANA:

1. ulazni hodnik	2,88m ²
2. dnevni boravak s kuhinjom	19,02m ²
3. kupaonica	3,97m ²
4. soba	10,03m ²
5. natkriveni balkon (x0,50)	2,18m ²
UKUPNO:	38,08m²



0 | 1 | 2 | 5 | m



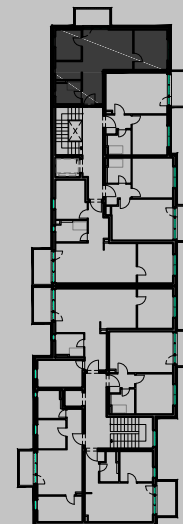
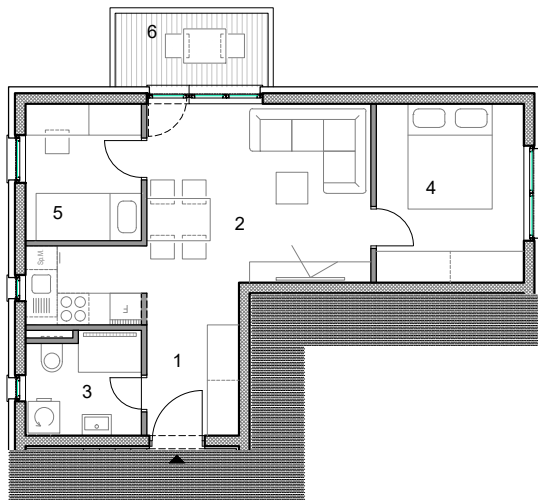
S.1.23.

- trosoban -

1. KAT

ISKAZ NETTO POVRŠINE STANA:

1. ulazni hodnik	4,72m ²
2. dnevni boravak s kuhinjom	19,19m ²
3. kupaonica	4,15m ²
4. soba	9,52m ²
5. soba 2	5,41m ²
6. natkriveni balkon (x0,50)	2,03m ²
UKUPNO:	45,02m²



0 | 1 | 2 | 5 | m



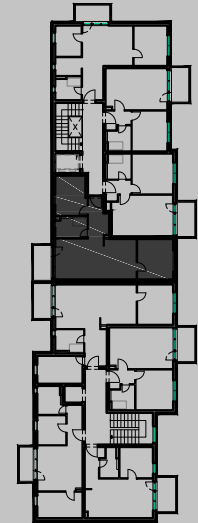
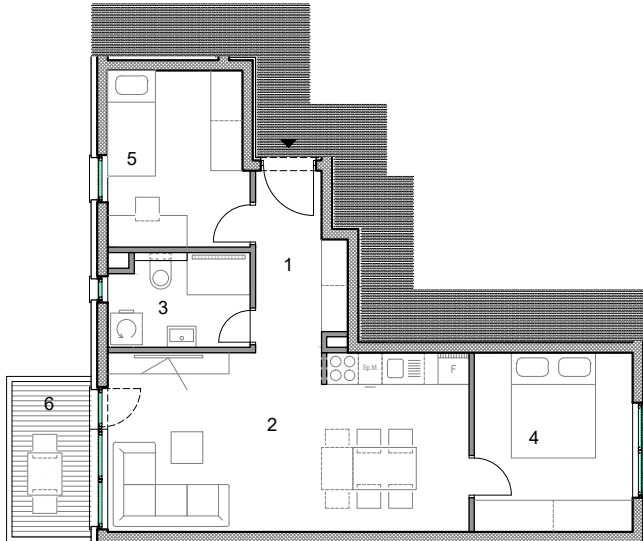
S.2.24.

- trosoban -

1. KAT

ISKAZ NETTO POVRŠINE STANA:

1. ulazni hodnik	5,19m ²
2. dnevni boravak s kuhinjom	24,29m ²
3. kupaonica	4,66m ²
4. soba	10,20m ²
5. soba 2	8,76m ²
6. lođa (x0,75)	3,24m ²
UKUPNO:	56,34m²



0 | 1 | 2 | 5 | m



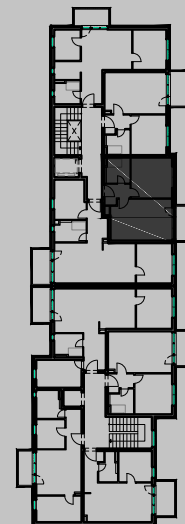
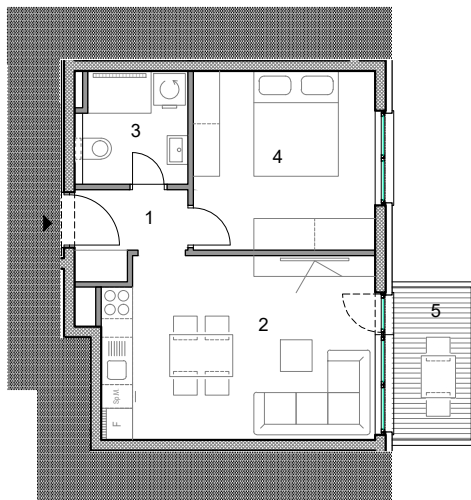
S.2.25.

- dvosoban -

1. KAT

ISKAZ NETTO POVRŠINE STANA:

1. ulazni hodnik	3,07m ²
2. dnevni boravak s kuhinjom	18,84m ²
3. kupaonica	4,42m ²
4. soba	11,73m ²
5. natkriveni balkon (x0,50)	2,18m ²
UKUPNO:	40,24m²



0 | 1 | 2 | 5 | m



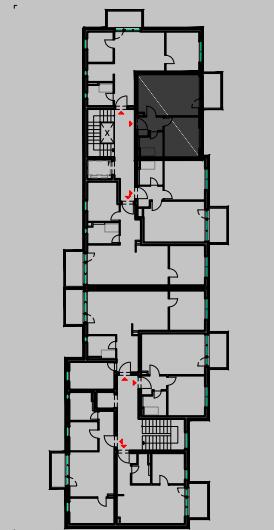
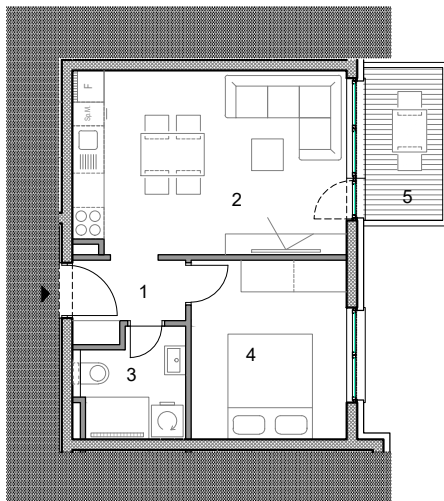
S.2.26.

- dvosoban -

1. KAT

ISKAZ NETTO POVRŠINE STANA:

1. ulazni hodnik	2,88m ²
2. dnevni boravak s kuhinjom	19,02m ²
3. kupaonica	3,97m ²
4. soba	10,03m ²
5. natkriveni balkon (x0,50)	2,18m ²
UKUPNO:	38,08m²



0 | 1 | 2 | 5 | m



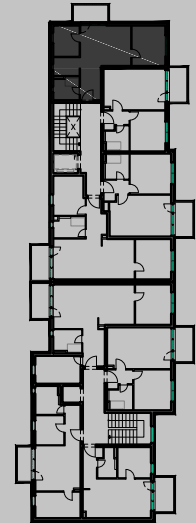
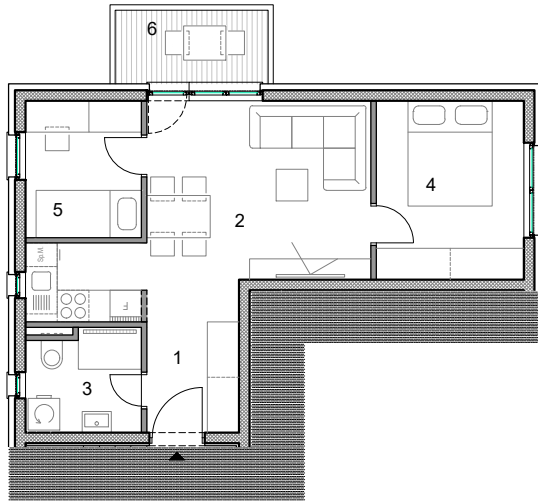
S.2.27.

- trosoban -

1. KAT

ISKAZ NETTO POVRŠINE STANA:

1. ulazni hodnik	4,72m ²
2. dnevni boravak s kuhinjom	19,19m ²
3. kupaonica	4,15m ²
4. soba	9,52m ²
5. soba 2	5,41m ²
6. natkriveni balkon (x0,50)	2,03m ²
UKUPNO:	45,02m²



0 | 1 | 2 | 5 | m



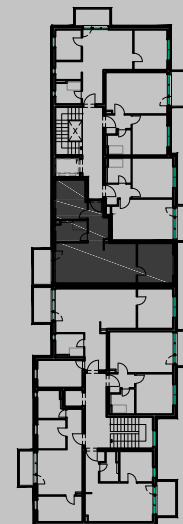
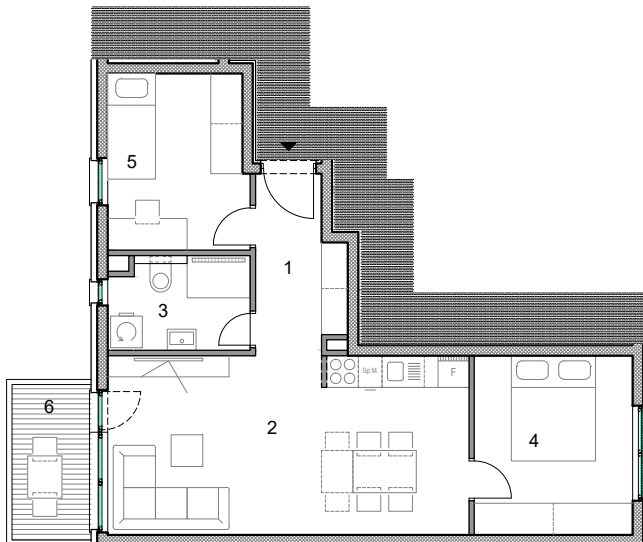
S.3.28.

- trosoban -

1. KAT

ISKAZ NETTO POVRŠINE STANA:

1. ulazni hodnik	5,19m ²
2. dnevni boravak s kuhinjom	24,29m ²
3. kupaonica	4,66m ²
4. soba	10,20m ²
5. soba 2	8,76m ²
6. lođa (x0,75)	3,24m ²
UKUPNO:	56,34m²



0 | 1 | 2 | 5 | m



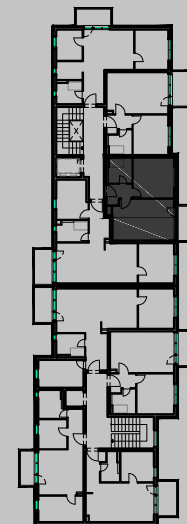
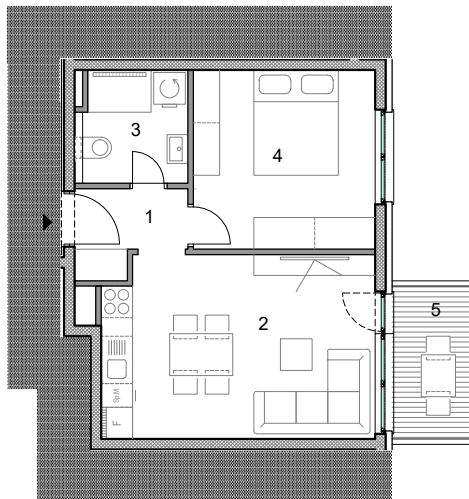
S.3.29.

- dvosoban -

1. KAT

ISKAZ NETTO POVRŠINE STANA:

1. ulazni hodnik	3,07m ²
2. dnevni boravak s kuhinjom	18,84m ²
3. kupaonica	4,42m ²
4. soba	11,73m ²
5. natkriveni balkon (x0,50)	2,18m ²
UKUPNO:	40,24m²



0 | 1 | 2 | 5 | m



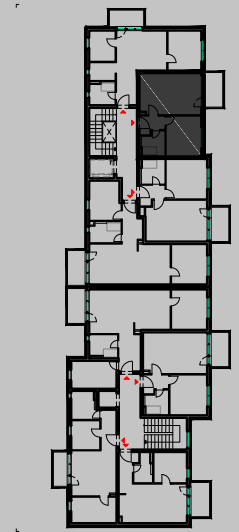
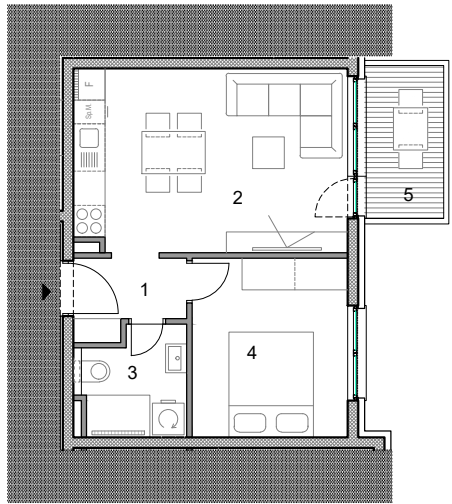
S.3.30.

- dvosoban -

1. KAT

ISKAZ NETTO POVRŠINE STANA:

1. ulazni hodnik	2,88m ²
2. dnevni boravak s kuhinjom	19,02m ²
3. kupaonica	3,97m ²
4. soba	10,03m ²
5. natkriveni balkon (x0,50)	2,18m ²
UKUPNO:	38,08m²



0 | 1 | 2 | 5 | m



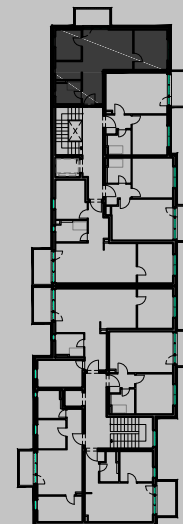
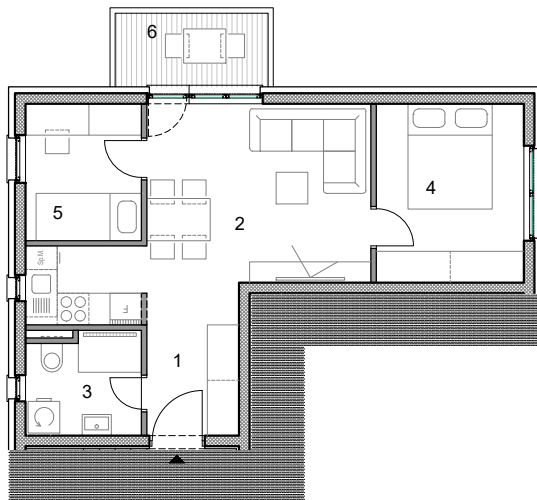
S.3.31.

- trosoban -

1. KAT

ISKAZ NETTO POVRŠINE STANA:

1. ulazni hodnik	4,72m ²
2. dnevni boravak s kuhinjom	19,19m ²
3. kupaonica	4,15m ²
4. soba	9,52m ²
5. soba 2	5,41m ²
6. natkriveni balkon (x0,50)	2,03m ²
UKUPNO:	45,02m²



0 | 1 | 2 | 5 | m



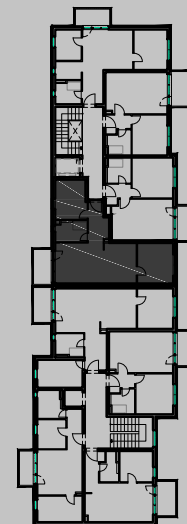
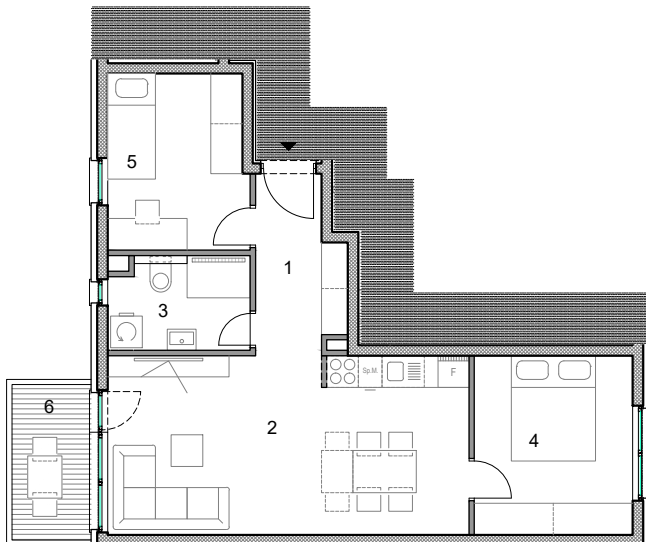
S.4.32.

- trosoban -

1. KAT

ISKAZ NETTO POVRŠINE STANA:

1. ulazni hodnik	5,19m ²
2. dnevni boravak s kuhinjom	24,29m ²
3. kupaonica	4,66m ²
4. soba	10,20m ²
5. soba 2	8,76m ²
6. lođa (x0,75)	3,24m ²
UKUPNO:	56,34m²



0 | 1 | 2 | 5 | m



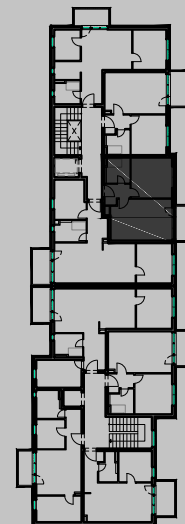
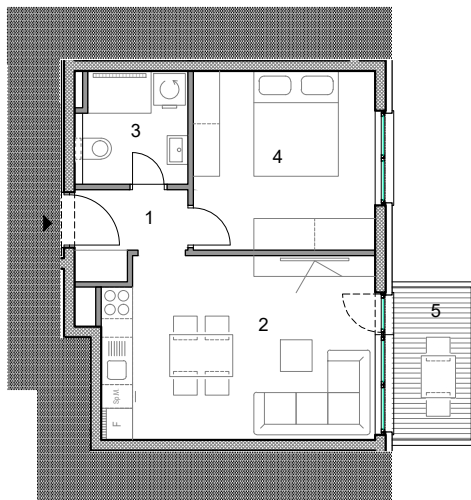
S.4.33.

- dvosoban -

1. KAT

ISKAZ NETTO POVRŠINE STANA:

1. ulazni hodnik	3,07m ²
2. dnevni boravak s kuhinjom	18,84m ²
3. kupaonica	4,42m ²
4. soba	11,73m ²
5. natkriveni balkon (x0,50)	2,18m ²
UKUPNO:	40,24m²



0 | 1 | 2 | 5 | m



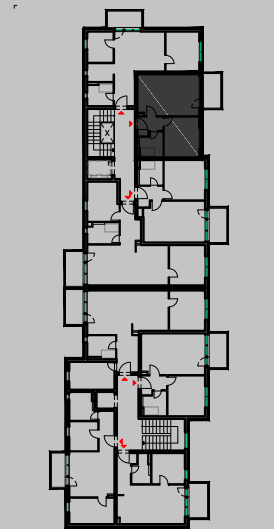
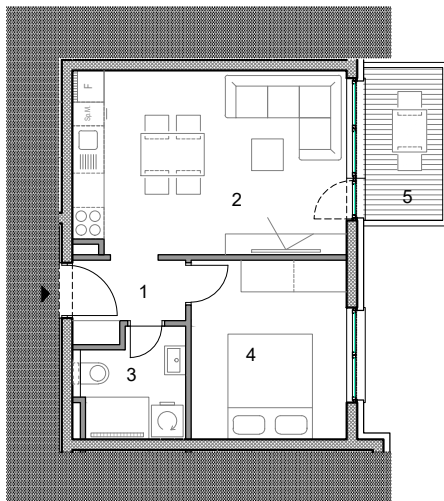
S.4.34.

- dvosoban -

1. KAT

ISKAZ NETTO POVRŠINE STANA:

1. ulazni hodnik	2,88m ²
2. dnevni boravak s kuhinjom	19,02m ²
3. kupaonica	3,97m ²
4. soba	10,03m ²
5. natkriveni balkon (x0,50)	2,18m ²
UKUPNO:	38,08m²



0 | 1 | 2 | 5 | m



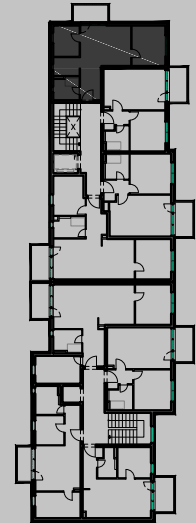
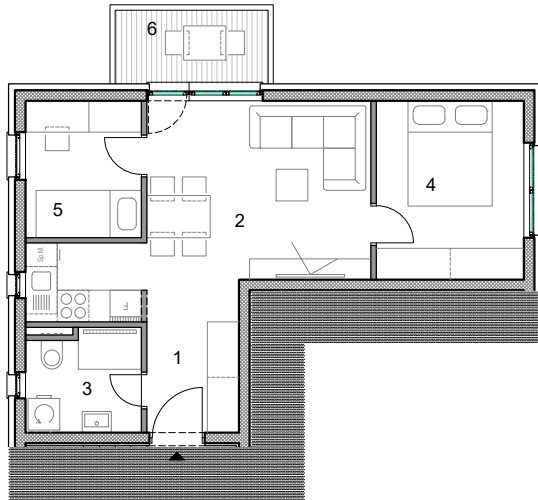
S.4.35.

- trosoban -

1. KAT

ISKAZ NETTO POVRŠINE STANA:

1.	ulazni hodnik	4,72m ²
2.	dnevni boravak s kuhinjom	19,19m ²
3.	kupaonica	4,15m ²
4.	soba	9,52m ²
5.	soba 2	5,41m ²
6.	natkriveni balkon (x0,50)	2,03m ²
UKUPNO:		45,02m²



0 | 1 | 2 | 5 | m



VARIJANTA B

S.1.4.

S.2.8.

S.3.12.

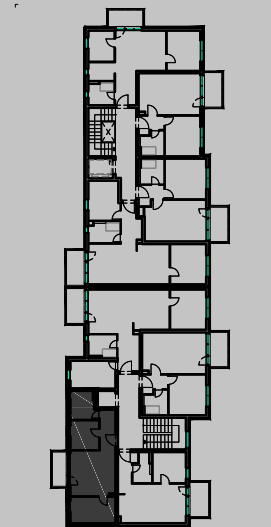
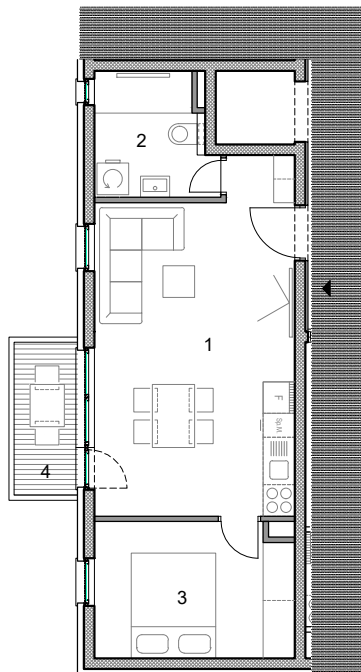
S.4.16.

- dvosoban -

1./2./3. i 4. KAT

ISKAZ NETTO POVRŠINE STANA:

1.	dnevni boravak s kuhinjom + ulaz	24,78m ²
2.	kupaonica	5,08m ²
3.	soba	9,64m ²
4.	natkriveni balkon (x0,50)	1,74m ²
UKUPNO:		41,24m ²



0 | 1 | 2 | 5 | m

