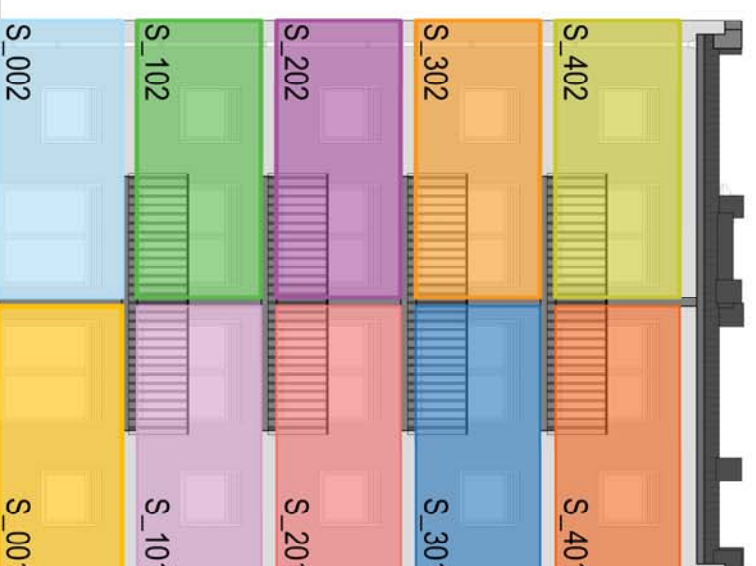


# STAMBENA ZGRADA

K.č.br. 4115, k.o. Trešnjevka  
Zvonigradska ulica 47, 10 000 Zagreb



PRIKAZ STANOVA NA ZAPADNOM PROČELJU

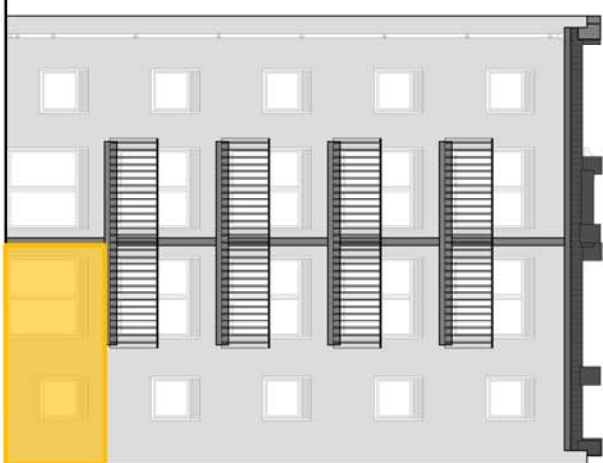


PRIKAZ STANOVA NA ISTOČNOM PROČELJU

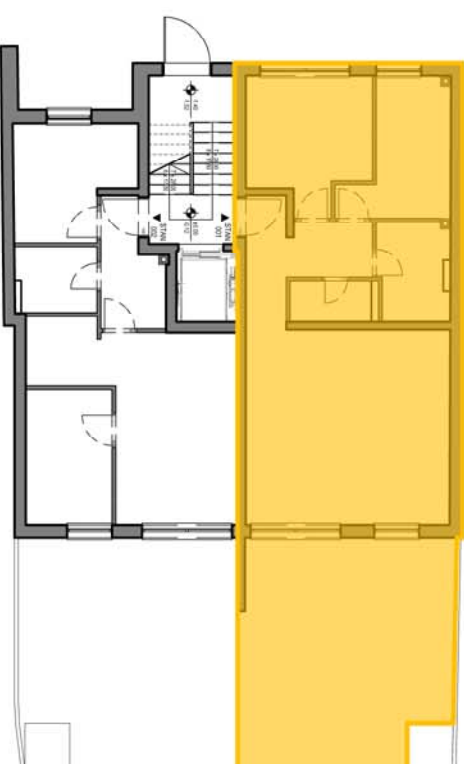
R.br.	PROSTORIJIA	S 001	S 002	S 101	S102	S201	S202	S301	S302	S401	S402
01	ulaz/hodnik	7,20	4,95	7,20	5,05	7,20	5,05	7,20	5,05	7,20	5,05
02	wc/kupaonica	2,60		2,60	2,20	2,60	2,20	2,60	2,20	2,60	2,20
03	kupaonica	5,00	3,90	5,00	4,25	5,00	4,25	5,00	4,25	5,00	4,25
04	kuhinja		3,65		3,65		3,65		3,65		3,65
05	boravak	28,50	17,30	28,50	17,30	28,50	17,30	28,50	17,30	28,50	17,30
06	soba	8,50	8,35	8,50	8,35	8,50	8,35	8,50	8,35	8,50	8,35
07	soba	10,80	9,00	10,80	10,50	10,80	10,50	10,80	10,50	10,80	10,50
	UKUPNO	62,60	47,15	62,60	51,30	62,60	51,30	62,60	51,30	62,60	51,30
08	terasa/balkon										
	keof. 0,25/0,5		33,80		9,80		9,80		9,80		9,80
			8,45		4,90		4,90		4,90		4,90
	SVEUKUPNO	71,05	56,00	68,00	56,20	68,00	56,20	68,00	56,20	68,00	56,20



PRIKAZ STANA NA ZAPADNOM PROČELJU



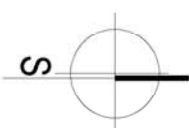
PRIKAZ STANA NA ISTOČNOM PROČELJU



PRIKAZ STANA NA ETAŽI

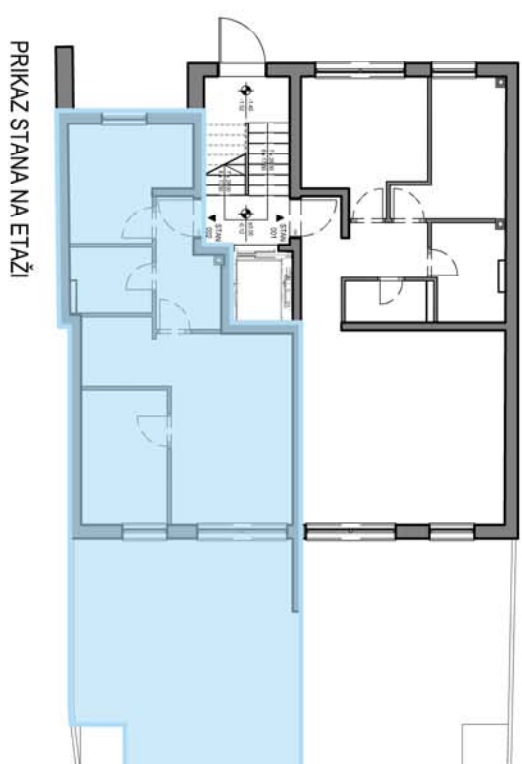
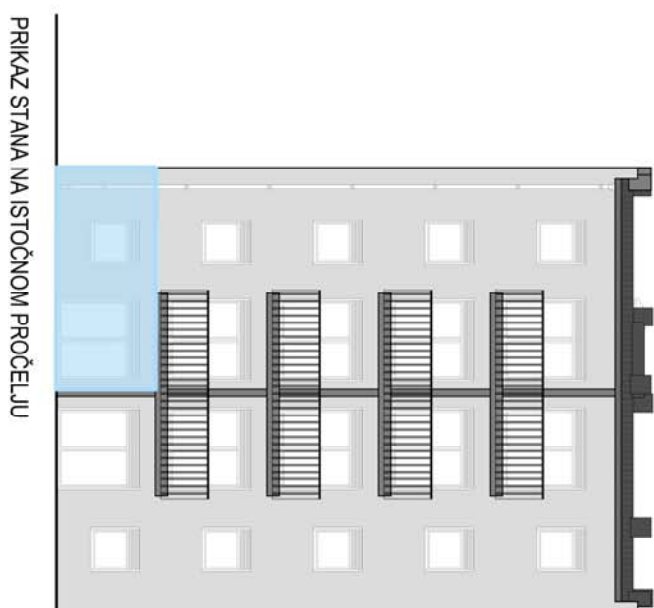
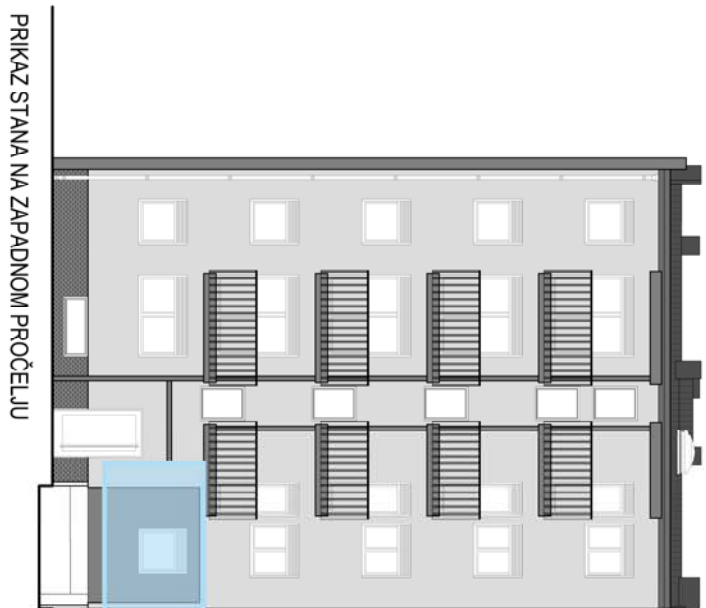
STAN 001

PRIKAZ PLOŠTINA PROSTORIJA I UKUPNA PLOŠTINA STANA



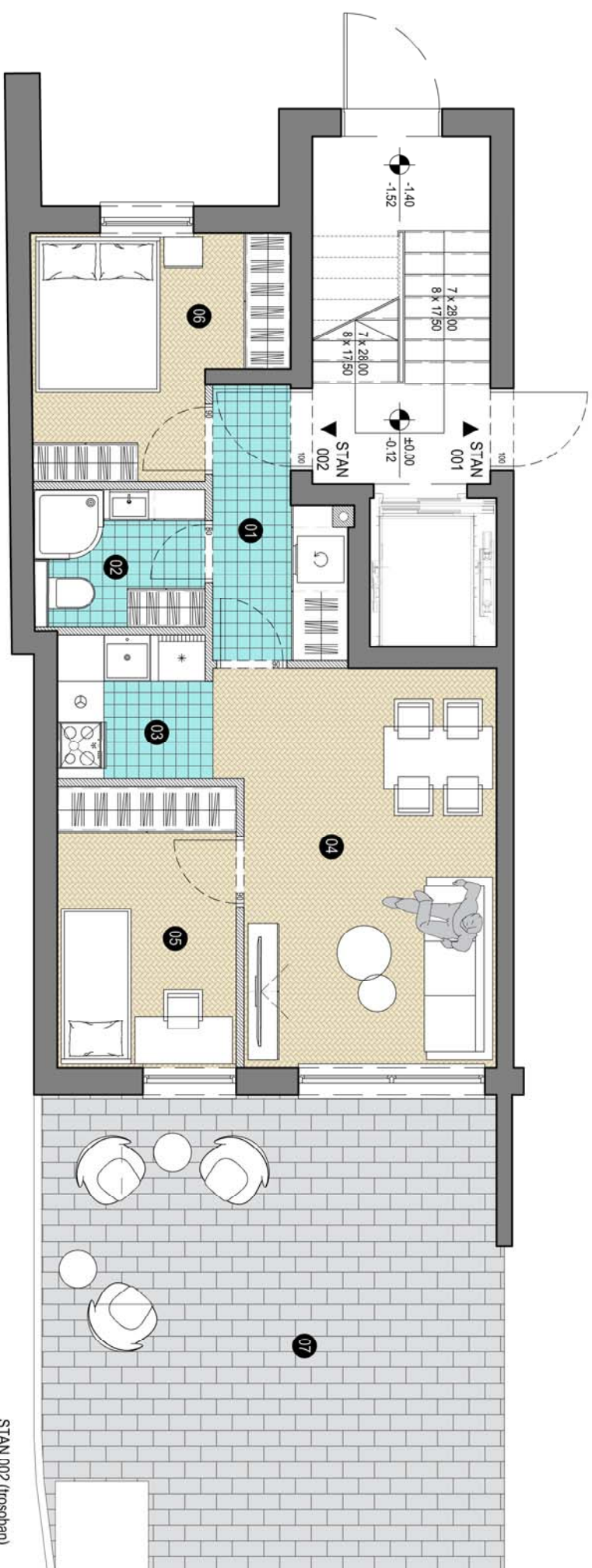
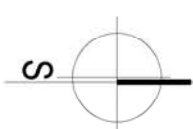
STAN 001 (trosoban)

01-ulazhodnik	7,20m <sup>2</sup>
02-kupaonica	2,60m <sup>2</sup>
03-kupaonica	5,00m <sup>2</sup>
04-kuhinja/toravak	28,50m <sup>2</sup>
05-soba	8,50m <sup>2</sup>
06-soba	10,80m <sup>2</sup>
ukupno	62,60m <sup>2</sup>
07-terasa	8,45m <sup>2</sup>
(33,80m <sup>2</sup> x 0,25)	
sveukupno	71,05m <sup>2</sup>



STAN 002

PRIKAZ PLOŠTINA PROSTORIJA I UKUPNA PLOŠTINA STANA



01-ulaz/hodnik	4,95 m <sup>2</sup>
02-kupaonica	3,90 m <sup>2</sup>
03-kuhinja	3,65 m <sup>2</sup>
04-boravak	17,30 m <sup>2</sup>
05-soba	8,35 m <sup>2</sup>
06-soba	9,00 m <sup>2</sup>
ukupno	47,15 m <sup>2</sup>
07-terasa	8,85 m <sup>2</sup>
(35,40 m <sup>2</sup> x 0,25)	
sveukupno	56,00 m <sup>2</sup>

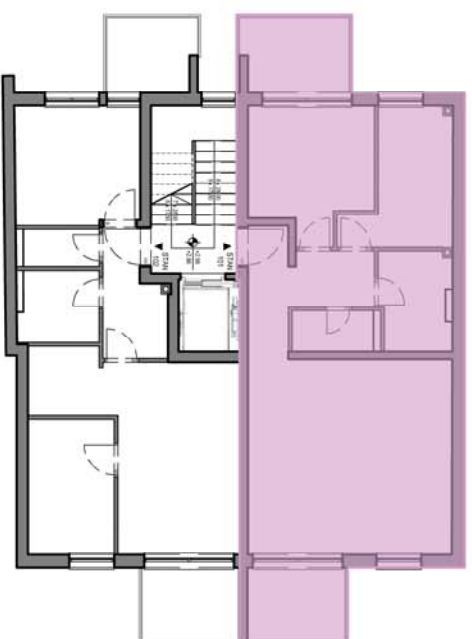
PRIKAZ STANA NA ZAPADNOM PROČELJU



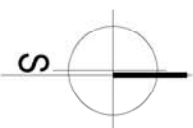
PRIKAZ STANA NA ISTOČNOM PROČELJU



PRIKAZ STANA NA ETAŽI

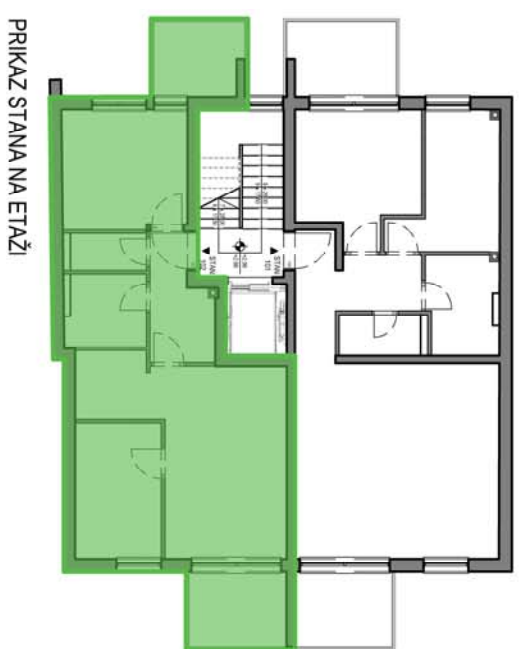
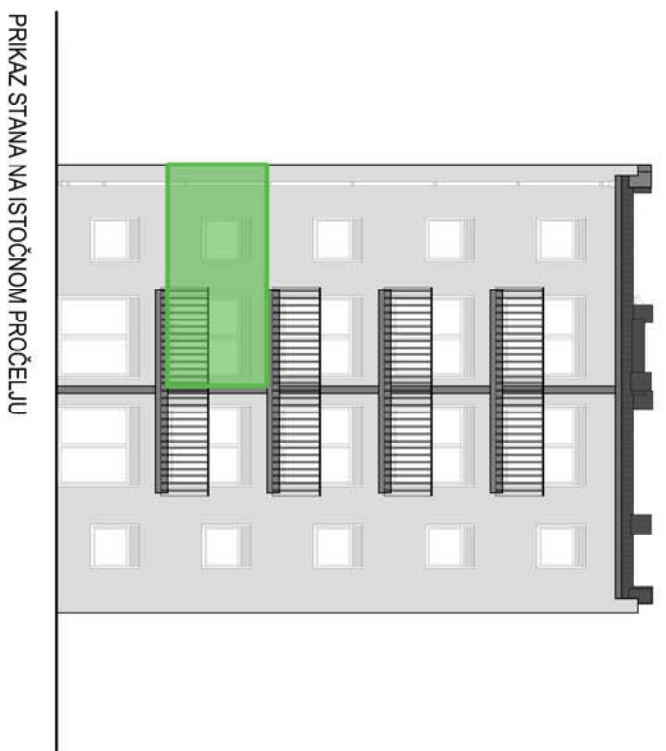
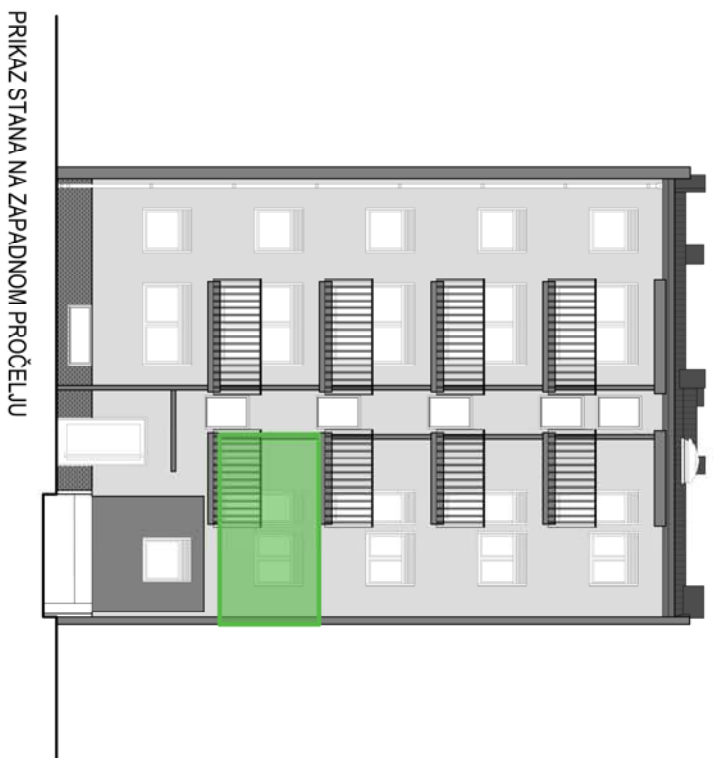


**STAN 101/201/301/401**  
 PRIKAZ PLOŠTINA PROSTORIJA I UKUPNA PLOŠTINA STANA

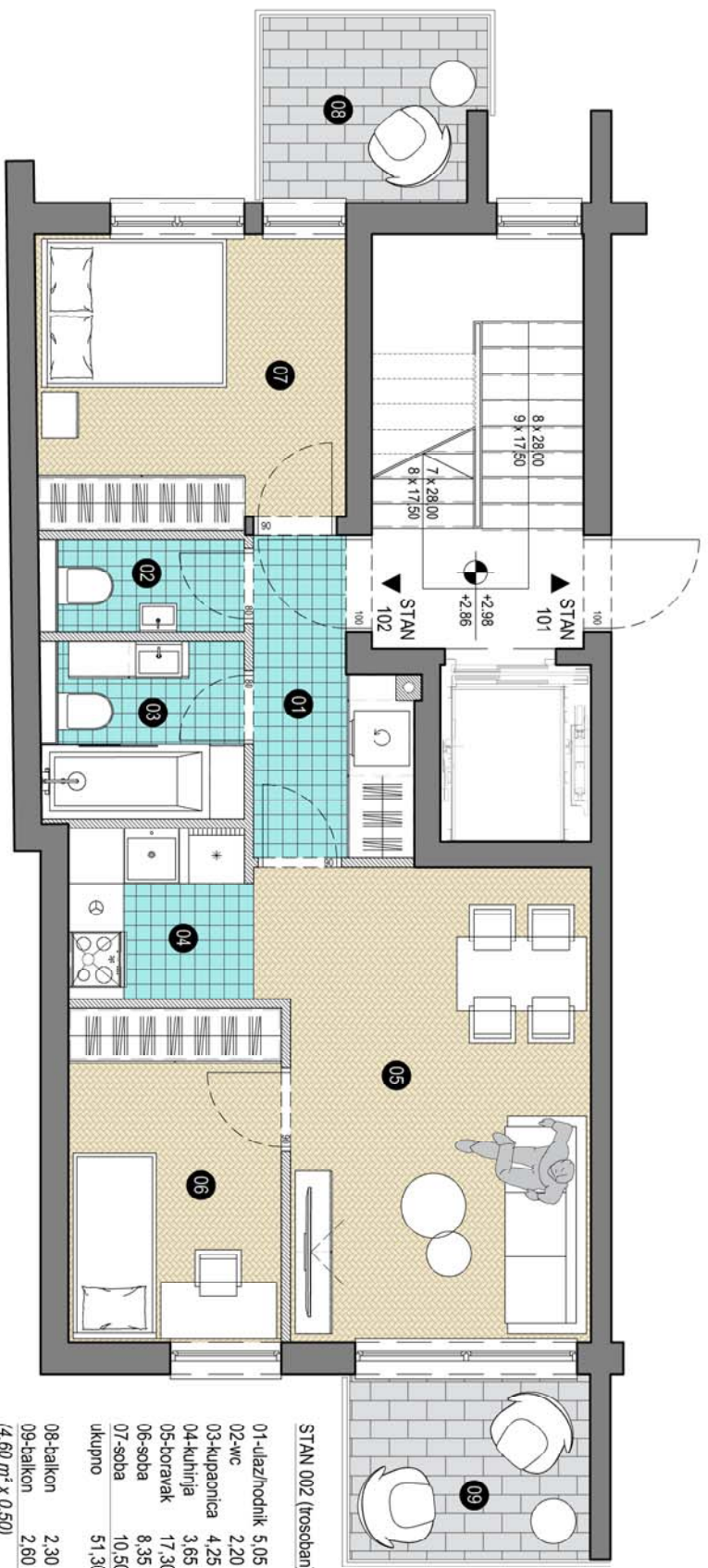


STAN 001 (trosoban)

01-iliž/hodnik	7,20m <sup>2</sup>
02-kupaonica	2,60 m <sup>2</sup>
03-kupaonica	5,00 m <sup>2</sup>
04-kuhinja/boravak	28,50 m <sup>2</sup>
05-soba	8,50 m <sup>2</sup>
06-soba	10,80 m <sup>2</sup>
ukupno	62,60 m <sup>2</sup>
07-balkon	2,80 m <sup>2</sup>
08-balkon	2,60 m <sup>2</sup>
(5,20 m <sup>2</sup> x 0,50)	
ukupno	5,40 m <sup>2</sup>
sveukupno	68,00 m <sup>2</sup>



STAN 102/202/302/402  
 PRIKAZ PLOŠTINA PROSTORIJA I UKUPNA PLOŠTINA STANA



01-ulaz/hodnik	5,05 m <sup>2</sup>
02-wc	2,20 m <sup>2</sup>
03-kupaonica	4,25 m <sup>2</sup>
04-kuhinja	3,65 m <sup>2</sup>
05-horavak	17,30 m <sup>2</sup>
06-soba	8,35 m <sup>2</sup>
07-soba	10,50 m <sup>2</sup>
ukupno	51,30 m <sup>2</sup>
08-balcon	2,30 m <sup>2</sup>
09-balcon	2,60 m <sup>2</sup>
(4,60 m <sup>2</sup> x 0,50)	
(5,20 m <sup>2</sup> x 0,50)	
ukupno	4,90 m <sup>2</sup>
sveukupno	56,20 m <sup>2</sup>