

**BRUTO POVRŠINA ETAŽE**  $P = 137.97 \text{ m}^2$

**NETO POVRŠINA ETAŽE**  $P = 123.20 \text{ m}^2$

**APARTMAN A1**

- 1. DN. BORAVAK, BLAGOVAONICA  
I KUHINJA, ker. pl.  $P = 18.32 \text{ m}^2$
- 2. SOBA, parket  $P = 10.12 \text{ m}^2$
- 3. SOBA, parket  $P = 9.90 \text{ m}^2$
- 4. PREDSOBLJE, ker. pl.  $P = 8.59 \text{ m}^2$
- 5. KUPAONICA, ker. pl.  $P = 4.05 \text{ m}^2$
- 6. NATKRIVENA TERASA, ker. pl.  $P_n = 5.07 \text{ m}^2$

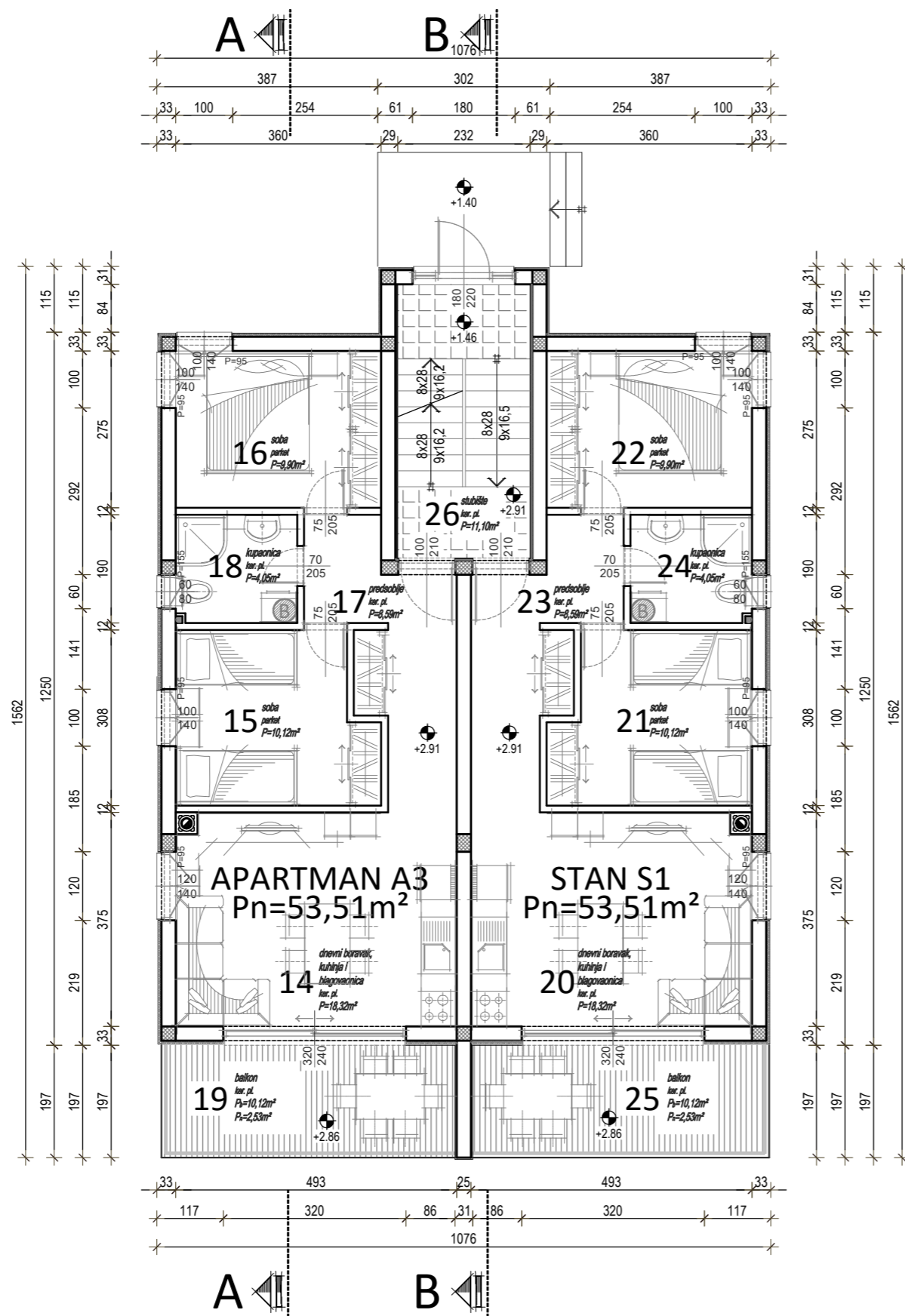
**APARTMAN A1**  $P = 56.05 \text{ m}^2$

**APARTMAN A2**

- 7. DN. BORAVAK, BLAGOVAONICA  
I KUHINJA, ker. pl.  $P = 18.32 \text{ m}^2$
- 8. SOBA, parket  $P = 10.12 \text{ m}^2$
- 9. SOBA, parket  $P = 9.90 \text{ m}^2$
- 10. PREDSOBLJE, ker. pl.  $P = 8.59 \text{ m}^2$
- 11. KUPAONICA, ker. pl.  $P = 4.05 \text{ m}^2$
- 12. NATKRIVENA TERASA, ker. pl.  $P_n = 5.07 \text{ m}^2$

**APARTMAN A2**  $P = 56.05 \text{ m}^2$

13. STUBIŠTE, ker. pl.  $P = 11.10 \text{ m}^2$



**BRUTO POVRŠINA ETAŽE**  $P = 137.97 \text{ m}^2$

**NETO POVRŠINA ETAŽE**  $P = 118.12 \text{ m}^2$

**APARTMAN A3**

- 14. DN. BORAVAK, BLAGOVAONICA  $P = 18.32 \text{ m}^2$
- I KUHINJA, ker. pl.  $P = 10.12 \text{ m}^2$
- 15. SOBA, parket  $P = 9.90 \text{ m}^2$
- 16. SOBA, parket  $P = 8.59 \text{ m}^2$
- 17. PREDSOBLJE, ker. pl.  $P = 4.05 \text{ m}^2$
- 18. KUPAONICA, ker. pl.  $P_n = 2.53 \text{ m}^2$

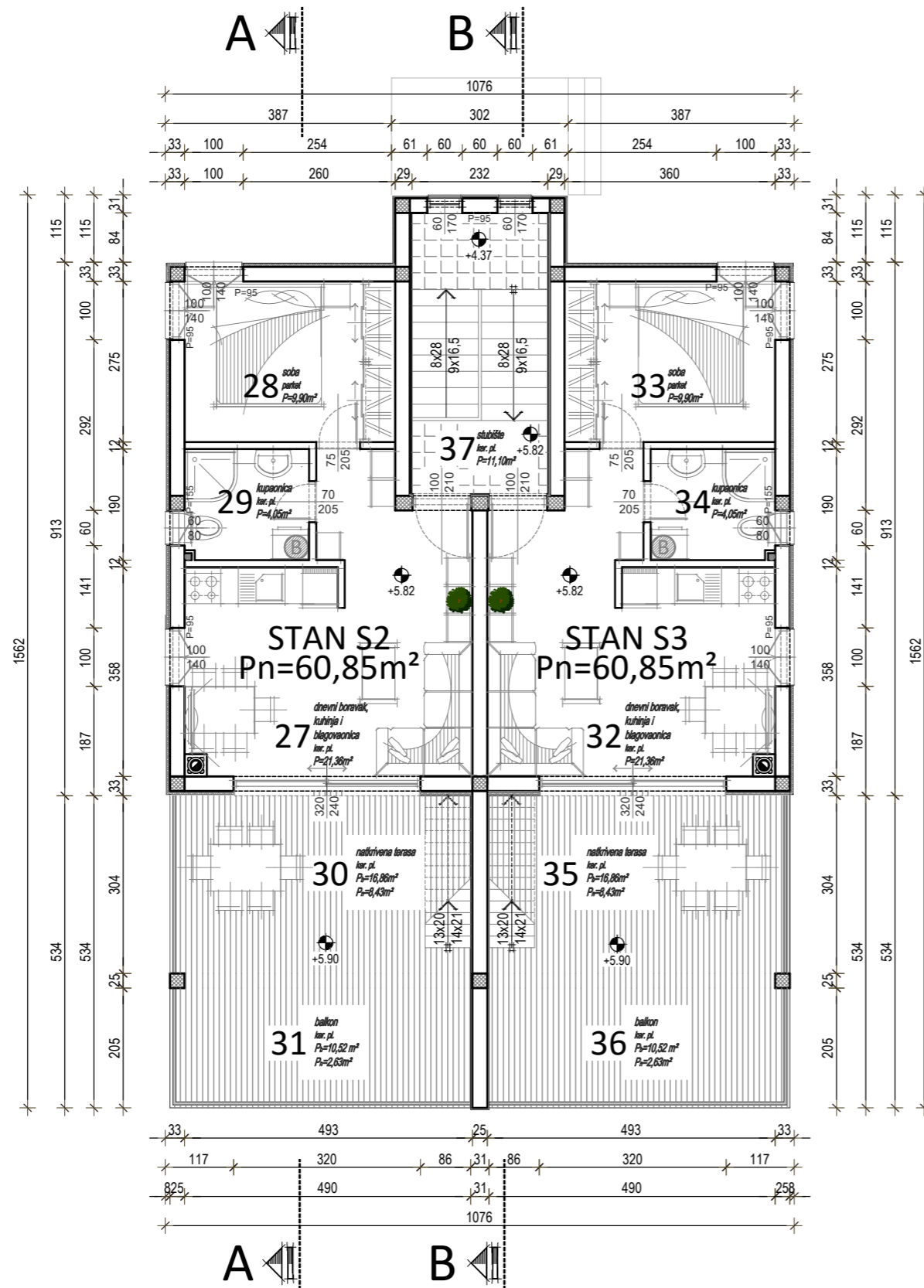
**APARTMAN A3**  $P = 53.51 \text{ m}^2$

**STAN S1**

- 20. DN. BORAVAK, BLAGOVAONICA  $P = 18.32 \text{ m}^2$
- I KUHINJA, ker. pl.  $P = 10.12 \text{ m}^2$
- 21. SOBA, parket  $P = 9.90 \text{ m}^2$
- 22. SOBA, parket  $P = 8.59 \text{ m}^2$
- 23. PREDSOBLJE, ker. pl.  $P = 4.05 \text{ m}^2$
- 24. KUPAONICA, ker. pl.  $P_n = 2.53 \text{ m}^2$

**STAN S1**  $P = 53.51 \text{ m}^2$

**26. STUBIŠTE**  $P = 11.10 \text{ m}^2$



**BRUTO POVRŠINA ETAŽE**  $P = 101.71 \text{ m}^2$

**NETO POVRŠINA ETAŽE**  $P = 103.84 \text{ m}^2$

**STAN S2**

27. DN. BORAVAK, BLAGOVAONICA

I KUHINJA, ker. pl.  $P = 21.36 \text{ m}^2$

28. SOBA, parket  $P = 9.90 \text{ m}^2$

29. KUPAONICA, ker.pl.  $P = 4.05 \text{ m}^2$

30. NATKRIVENA TERASA, ker. pl.  $P_n = 8.43 \text{ m}^2$

31. BALKON, ker. pl.  $P_n = 2.63 \text{ m}^2$

**STAN S2 (2. KAT)**  $P = 46.37 \text{ m}^2$

**STAN S3**

32. DN. BORAVAK, BLAGOVAONICA

I KUHINJA, ker. pl.  $P = 21.36 \text{ m}^2$

33. SOBA, parket  $P = 9.90 \text{ m}^2$

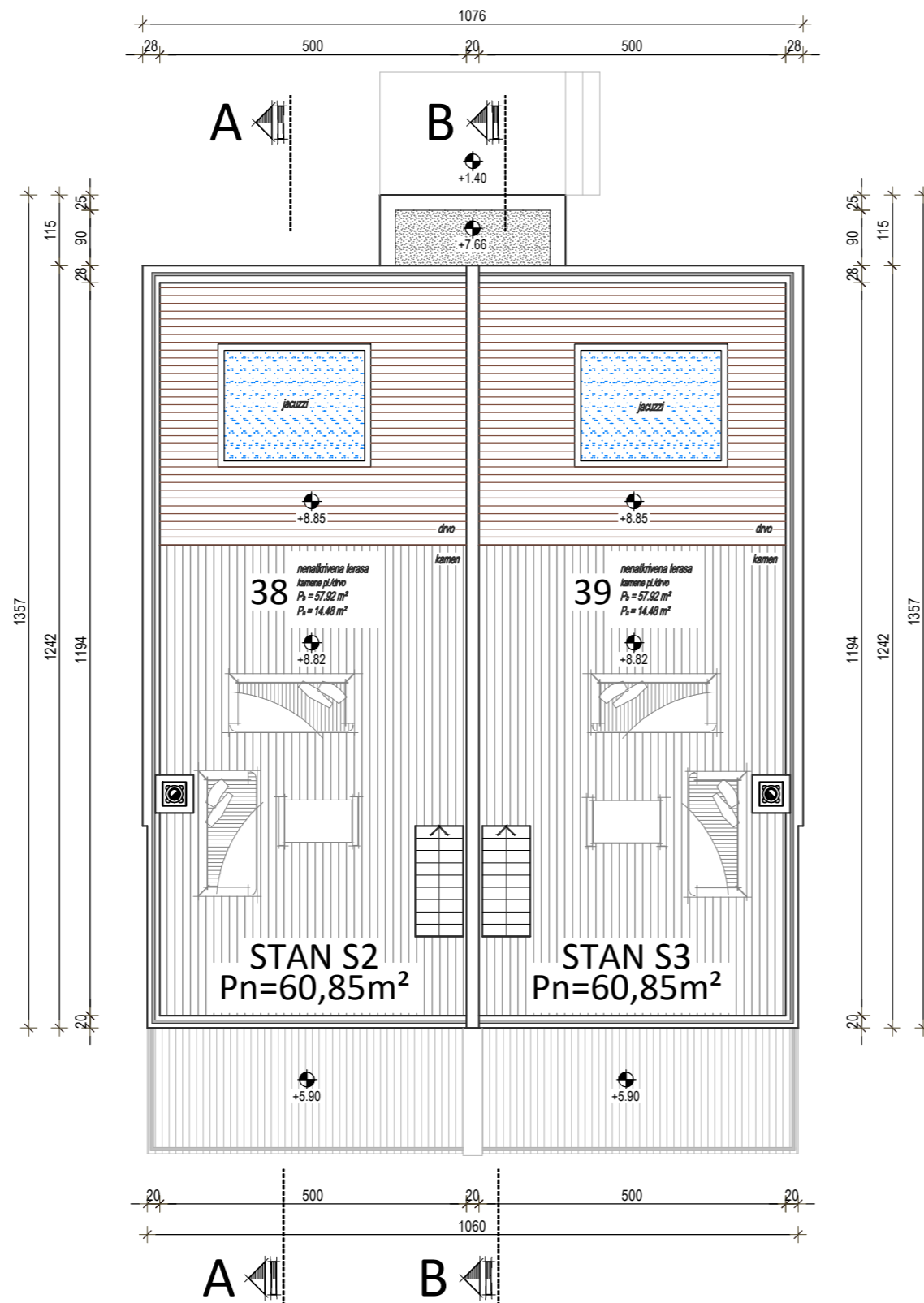
34. KUPAONICA, ker.pl.  $P = 4.05 \text{ m}^2$

35. NATKRIVENA TERASA, ker. pl.  $P_n = 8.43 \text{ m}^2$

36. BALKON, ker. pl.  $P_n = 2.63 \text{ m}^2$

**STAN S3 (2. KAT)**  $P = 46.37 \text{ m}^2$

**37. STUBIŠTE**  $P = 11.10 \text{ m}^2$



**BRUTO POVRŠINA ETAŽE**  $P = 0.00 \text{ m}^2$

**NETO POVRŠINA ETAŽE**  $P = 28.96 \text{ m}^2$

**STAN S2**

38. NENATKRIVENA TERASA, ker. pl.  $P_n = 14.48 \text{ m}^2$

STAN S2 (PK)  $P = 14.48 \text{ m}^2$

STAN S2 UKUPNO  $P = 60.85 \text{ m}^2$

**STAN S3**

39. NENATKRIVENA TERASA, ker. pl.  $P_n = 14.48 \text{ m}^2$

STAN S3 (PK)  $P = 14.48 \text{ m}^2$

STAN S3 UKUPNO  $P = 60.85 \text{ m}^2$